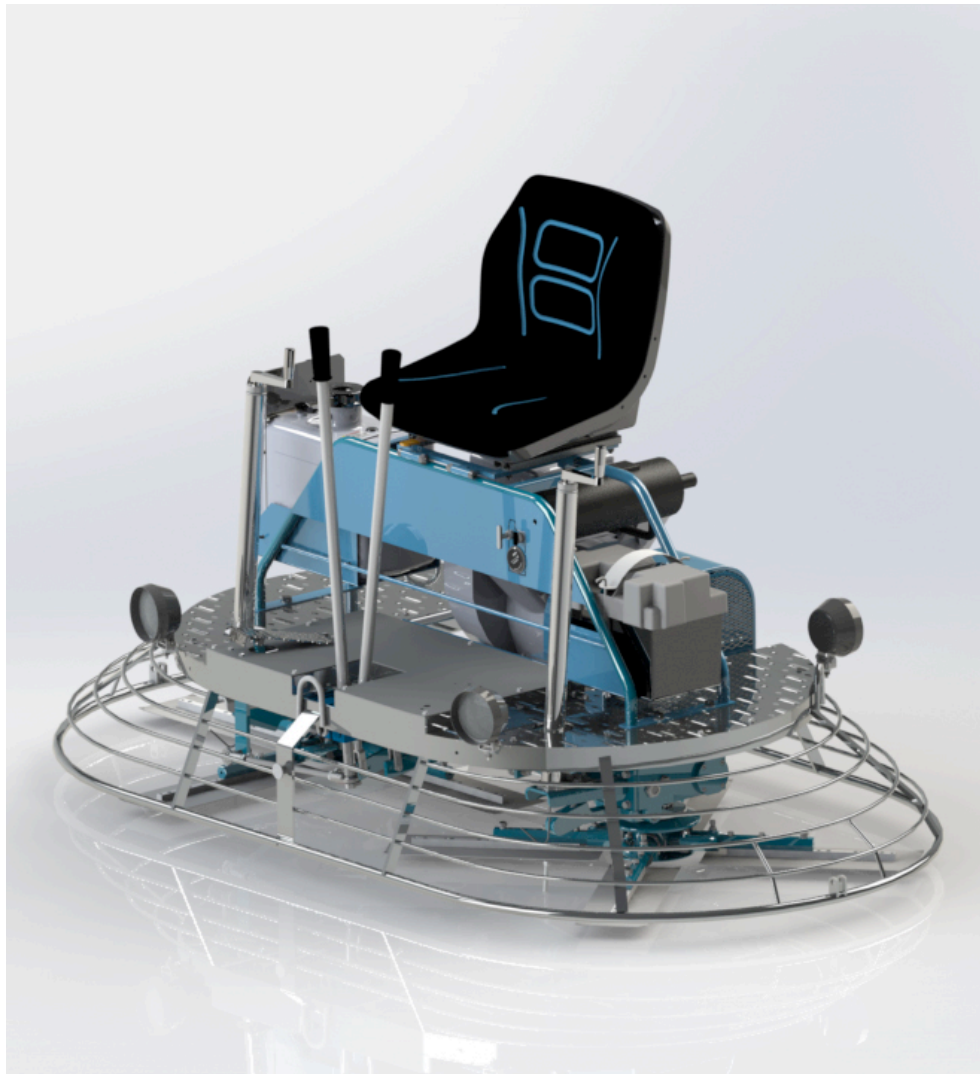


BARTELL

CONCRETE EQUIPMENT

INSTRUCTION MANUAL & PARTS BOOK

TS88 RIDE-ON TROWEL



POWERFUL - EFFICIENT - DEPENDABLE

BARTELL MORRISON INC. BARTELL MORRISON (USA) LLC
375 ANNAGEM BLVD, MISSISSAUGA, ONTARIO, CANADA, L5T 3A7, 905-364-4200 FAX 905-364-4201
200 COMMERCE DRIVE, FREEHOLD, NEW JERSEY, USA, 07728, 732-566-5400 FAX 732-5444

Doc. # OI – B09040
Orig. Rel. – 06/2005
Curr. Rev. – 13
Rev. Date – 03/2015

TS88 RIDE-ON TROWEL INSTRUCTION MANUAL

FOREWORD

It is important that the following be read carefully in order that the operational performance of the Bartell RIDE-ON Trowel be fully understood. Proper maintenance procedures will ensure long life and top performance of the unit.

SAFETY PRECAUTIONS

- Always keep unauthorized, inexperienced, untrained people away from this machine.
- Rotating and moving parts will cause injury if contacted. Make sure guards are in place. Keep hands and feet away from moving parts.
- Fuel the machine only when the engine is stopped, using all necessary safety precautions.
- The engine must always be stopped before attempting any repair or adjustments. Ignition key should be off. **Danger: Never operate the machine in an explosive atmosphere, near combustible materials or where ventilation does not clear exhaust fumes. Repair fuel leaks immediately. Refer to your engine owner's manual for more safety instructions.**
- Be careful not to come in contact with the muffler when the engine is hot, serious burns may result!
- Always operate the machine in a seated position to maintain machine balance.
- **The transporter is designed for moving the unit around the job site only. It is not to be used for towing the Ride-On unit off-site.**
- When starting the trowel, do not exceed the 1/4 throttle position as recommended. A higher setting could cause the centrifugal clutch to engage, activation the trowel blades.
- Be careful with the trowel around stub pipes or other obstructions on the floor. Should the machine catch, or hit such an obstruction, serious damage may result to the machine, or operator may be thrown from the machine.
- Excess surface water may result in sudden loss of control of steering.
- Disconnect battery before attempting any electrical maintenance.
- Ensure that the electrical dead-man switch, located under the left foot pedal is operating. Placing your left foot flat on the pedal will engage the safety switch. Removing your foot from the pedal will disengage the safety switch and stop the engine. The engine will not start unless the safety switch is depressed. This safety feature must be used as designed.

ASSEMBLY INSTRUCTIONS

Your new Bartell Ride-On Trowel has been shipped to you partially disassembled. To prepare for operation use the following instructions:

1. BATTERY – SHIPPED DRY – NO ACID

Connect and secure the battery cables before attempting starting procedures.

2. STEERING HANDLE ASSEMBLY

The steering handles are shipped ready to connect. Position the handles over the handle sleeves so that the set-screws (2 per handle) are lined up with the tapped holes on the sleeves. Tighten the set-screws and test the mobility of the handles.

3. PITCH CONTROL ASSEMBLY

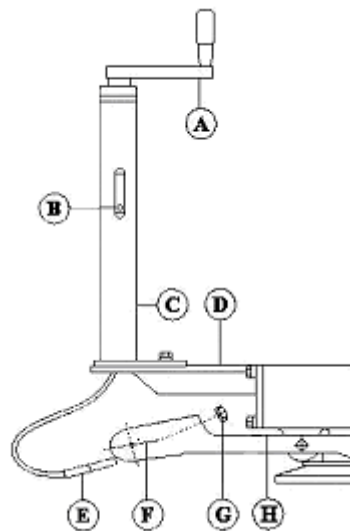


Figure 1a.

Bolt pitch control tube (C) to pitch control bracket (D) with bolts provided. Put cable end (E) through yoke arm (F) and secure with nylon insert locknut (G). For proper cable adjustment, turn crank (A) counter-clockwise to the stop position. Tighten nut (G) until all slack in the cable is removed. If more than 2 or 3 threads show through the nut, it should be turned back and the guide screw (B) moved to the next lower hole. Tension in the cable should then be readjusted. After adjusting tension, turn hand crank full clockwise (ABOUT 24 TURNS) and check for clearance between the yoke arm (F) and the gear box at point (H). There should be enough space to pass a business card through but not more than 1/8 inch.

TS88 RIDE-ON TROWEL INSTRUCTION MANUAL

5. FLOAT/TROWEL PITCH SETTING

Once you are familiar with the steering functions on a flat floor, you are ready to combine the steering with float/trowel pitch settings to produce the finish you require. The pitch adjustment feature of the BARTELL RIDE-ON TROWEL permits quick and accurate pitch changes of the finishing/float blades, without having to stop the machine. Turning the adjustment crank-handle at the end of the pitch control tubes enables you to change the pitch whenever necessary to allow for varying conditions over the slab surface.

Each spider plate is adjusted independently. The pitch setting will affect the steering of your unit. Experiment with the settings as you test drive so you will know what to expect.

CAUTION:

Do not let the machine stand in one spot on the soft cement; This may place unnecessary strain on the clutch to break it free of the cement. If the unit has been sitting for any length of time, break it free from the concrete before attempting operation.

CAUTION:

When finishing concrete above grade, erect a situation barrier along the edge of the slab as a protective measure. The barrier should be such that it will stop the trowel from riding over the edge of the slab in case of loss of control.

6. BLADE SYNCHRONIZATION (SPECIALLY MODIFIED UNITS ONLY)

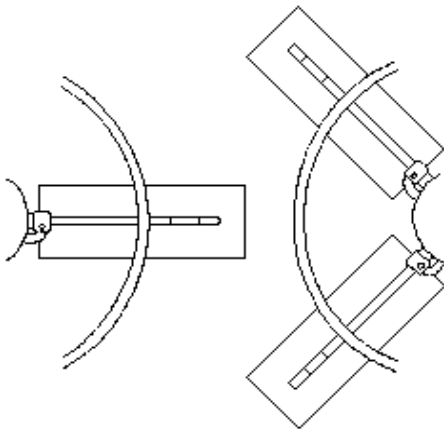


Figure 3a.

To avoid blades hitting, make sure spider plates are positioned as shown with respect to each other after performing any maintenance.

7. TRANSPORTER USE

CAUTION:

The transporter is designed to be used on the job site only. Do not use it to tow the machine off-site.

The transporter has pick-up brackets located on the inside of the wheels which should be positioned under the pick-up points on the frame. Before connection, the handle will be pointing upwards at approximately a 45 degree angle. Pull the handle down, engaging the transporter and secure the bracket and transporter to the frame by locking the handle bracket in the frame lock by means of the hitch pin. Using the handle as a lever, the ride-on may now be moved. To disconnect the transporter, follow the above steps in reverse.

MAINTENANCE INSTRUCTIONS

1. GENERAL

- Keep engine oil clean. Change according to engine manufacturer's specifications.
- Maintain the oil levels in the engine and gearbox assemblies. Change as required.
- Use only clean fuel in the engine.
- Check for loose nuts and bolts on the trowel and tighten as necessary.
- Check "V" belts for wear, replace if worn.
- Grease all fittings daily. See diagram.
- Clean the unit after every use to prevent hardening of sludge. Hard concrete is very difficult to remove, greatly increases weight and reduces efficient subsequent operation of unit.
- Check clutch linings regularly for wear. Linings should be changed when 3/4 worn. Do not allow metal to metal contact as this will damage the clutch drum. (New lining is 8mm.)

2. AIR CLEANER

Maintaining a clean engine will extend engine life. Keep air filter clean at all times. Clean air filter using the recommended solvent daily. See engine manual for proper cleaning procedure. Let the filter dry before reinstalling.

3. SPARK PLUG

Check and clean spark plugs regularly. A fouled, dirty spark plug caused hard starting and poor engine performance. Set spark plug gap to recommended clearance. Refer to engine manual.

