

T-2000 EI Parts Manual

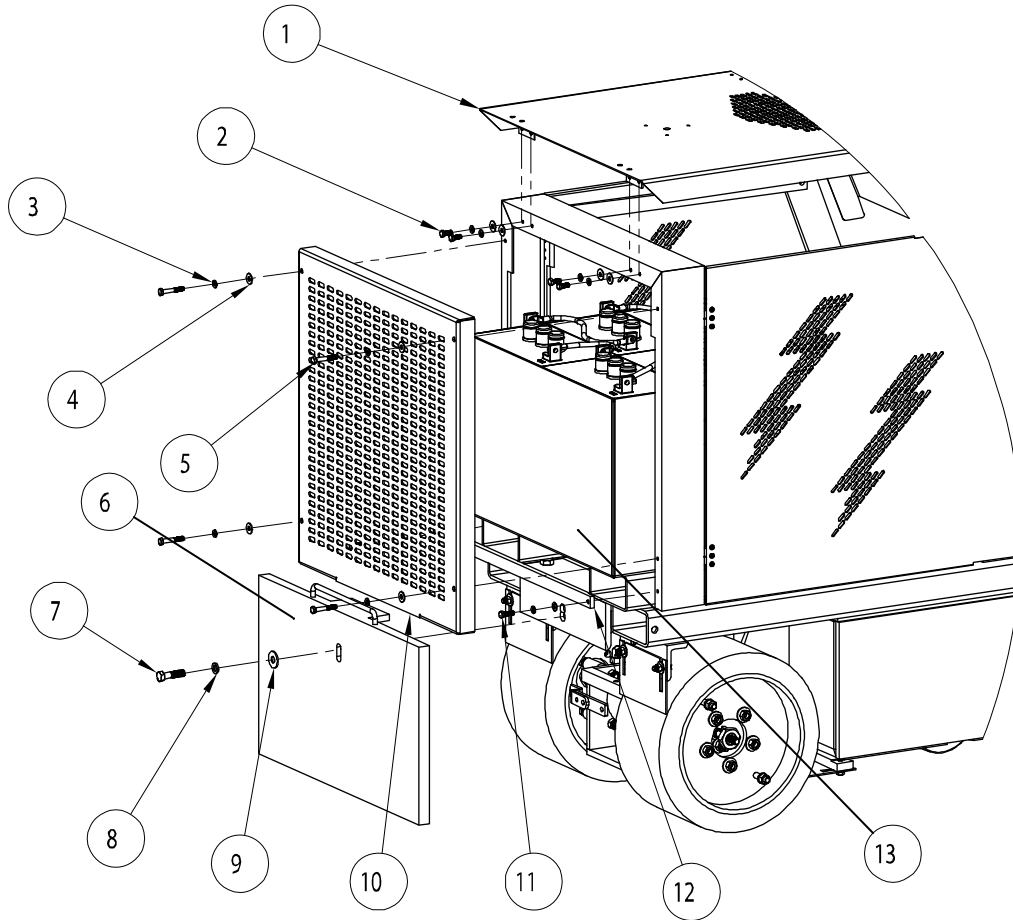


VERSION 1.2A

Table of Contents

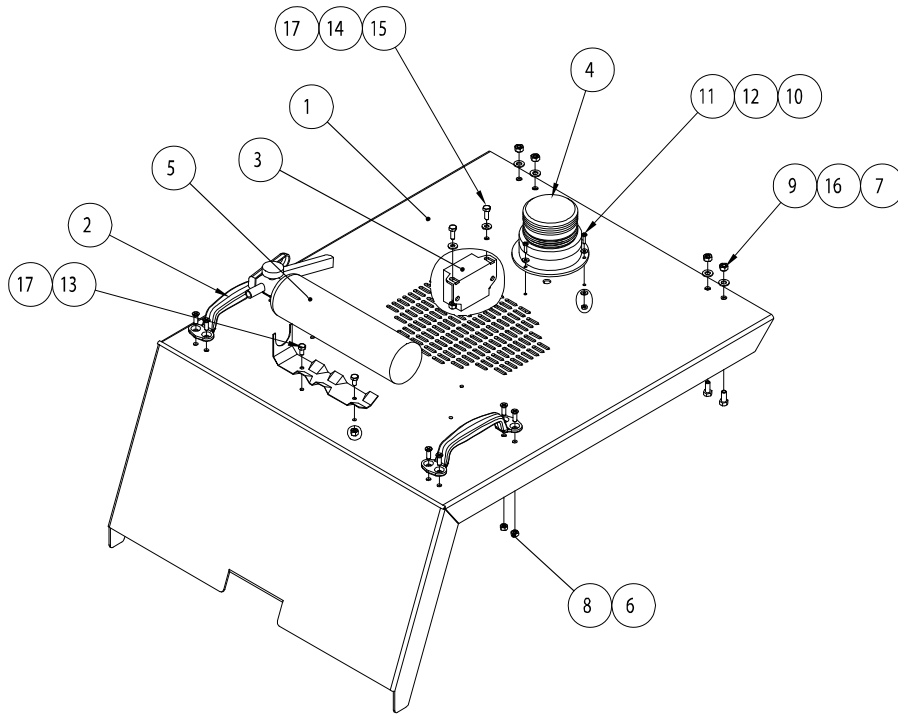
Table of Contents.....	2
Rear Grill, Hood & Rear Weight Assembly	3
Top Cover Assembly.....	4
Battery Pack Assembly	5
Seat & Brake Assembly	6
Console Assembly	7
Emergency Brake Handle Assembly.....	8
Left & Right Door Assembly	9
Door Hinge & Hood Arm Assembly.....	10
Foot Rest Assembly.....	11
Electronic Control & Front Cylinder Assembly	12
Electric Control Wiring Assembly	13
Electronic Control Module Assembly	14
Fuse Block & Valve.....	15
Hydraulic Control Valve Assembly	16
Hydraulic Hose Assembly	17
Electric Motor & Pump Assembly.....	19
Hydraulic Oil Filter Assembly	20
Hydraulic Tank Fitting Assembly.....	21
Front Blade Assembly – Double Weight Package	22
Front Scoop & Blade Holder Assembly.....	23
Front Weight Assembly	24
Swivel Head Receiver Installation.....	25
Caster Wheel Assembly.....	26
Wheel Scraper Assembly.....	27
Wheel Motor Assembly Installation	28
Wheel Motor Assembly	29

Rear Grill, Hood & Rear Weight Assembly



ITEM NO.	PART NUMBER	DESCRIPTION	QTY.
1	Page 4	TOP COVER ASSEMBLY	1
2	11-0118	STEEL HEX CAP BOLT 5/16"-18 x .75"	4
3	11-0040	5/16" LOCK WASHER	10
4	11-0034	5/16" FLAT WASHER	10
5	11-0161	STEEL HEX CAP BOLT 5/16"-18 x 2.00"	4
6	53-0067	REAR WEIGHT	1
7	11-0012	STEEL HEX CAP BOLT 1/2"-13 x 2.00"	1
8	11-0041	1/2" LOCK WASHER	1
9	11-0230	1/2" FLAT WASHER	1
10	53-0064	REAR GRILL	1
11	11-0002	STEEL, HEX CAP BOLT, 5/16"-18 x 1.00"	2
12	51-0349	REAR BATTERY TRAY STOP	1
13	81-0014	BATTERY PACK	1

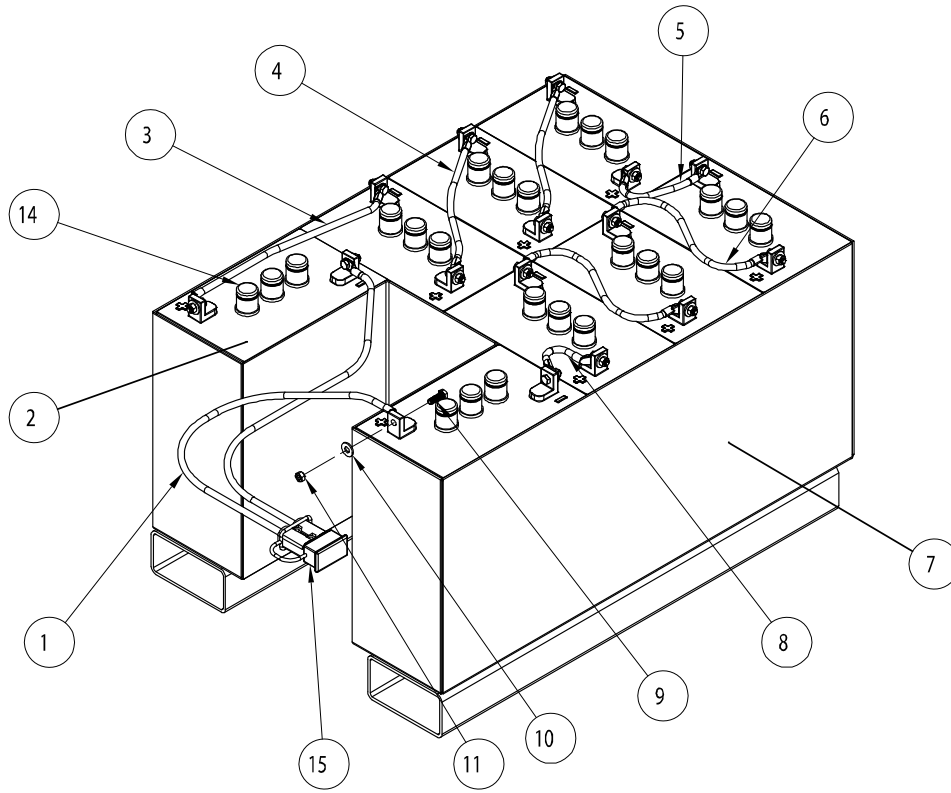
Top Cover Assembly



ITEM NO.	PART NUMBER	DESCRIPTION	QTY.
1	53-0065	T-2000EI Top Cover	1
2	13-0005	Chrome Handle	2
3	22-0005	Backup Alarm	1
4	22-0006	Strobe Light	1
5	42-0001	Fire Extinguisher, 2.5lb ABC	1
6	11-0140	Steel Flat Head Socket Cap Screw: 1/4"-20x3/4" ZP	8
7	11-0118	Steel Hex Head Cap Screw, GR5, 5/16"-18 x 3/4" ZP fully threaded	4
8	11-0024	Hex Nut, 1/4"-20, Nylon Insert, ZP	8
9	11-0025	Hex Nut, 5/16"-18, Nylon Insert, ZP	4
10	11-0031	Steel SAE Flat Washer, #8, ZP	6
11	11-0102	Pan Head Phillips Screw, 8-32 x 5/8" ZP	3
12	11-0022	Hex Nut, #8-32, Nylon Insert, ZP	3
13	11-0053	Steel Hex Head Cap Screw, Gr8, 1/4"-20 x 1/2", ZP	2
14	11-0033	Steel SAE Flat Washer, 1/4", ZP	2
15	11-0133	Steel Hex Head Cap Screw, GR5, 1/4"-20 x 3/4", ZP	2
16	11-0034	Steel SAE Flat Washer, 5/16", ZP	4
17	11-0024	Hex Nut, 1/4"-20, Nylon Insert, ZP	4

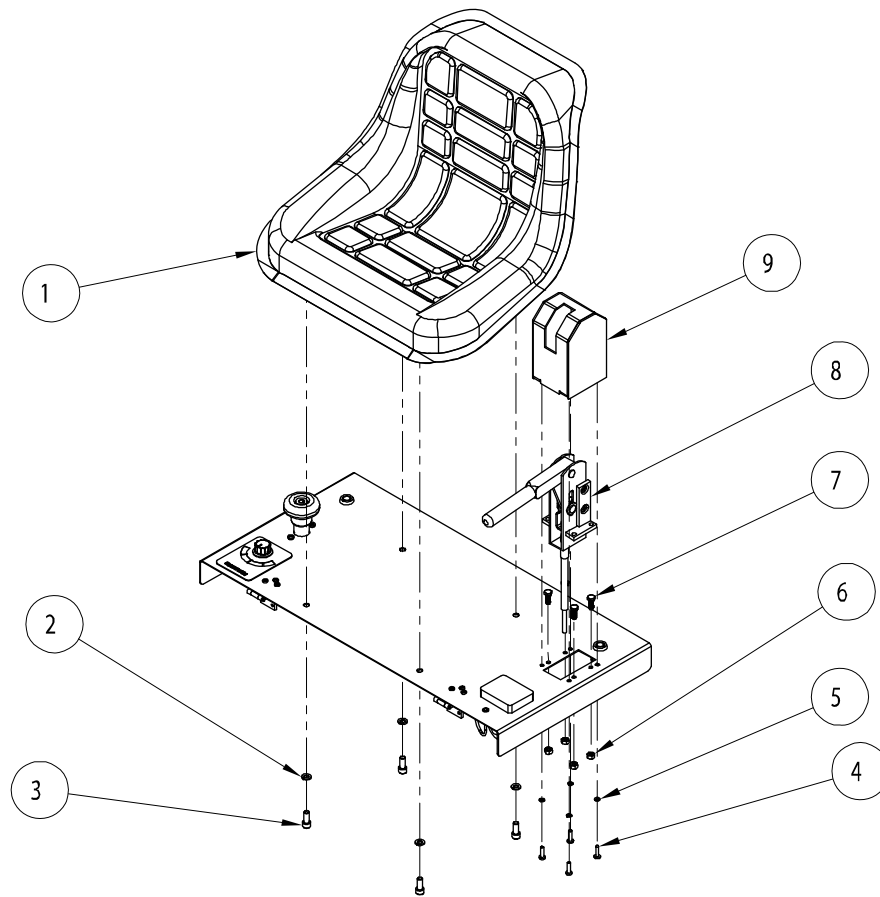
Battery Pack Assembly

Part # 70-0001



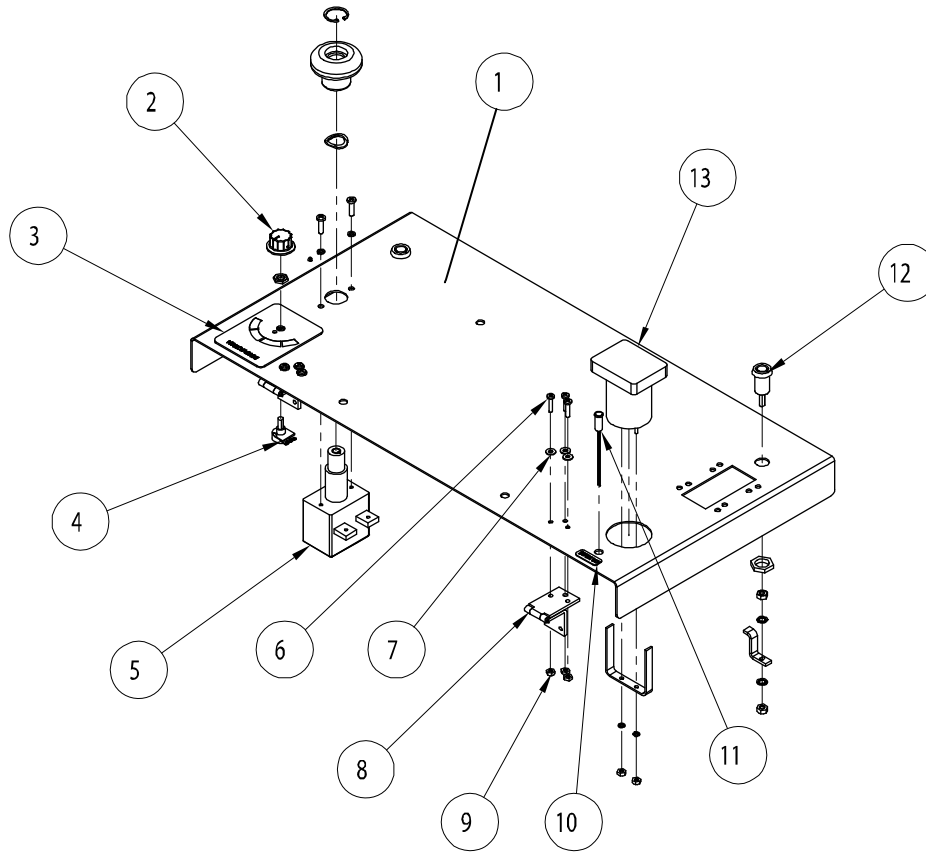
ITEM NO.	PART NUMBER	DESCRIPTION	QTY.
1	24-0037	BATTERY PACK CONNECTION PIG TAIL	1
2	23-0013	6V BATTERY	8
3	24-0032	#1 BATTERY CABLE 13.50"	1
4	24-0033	#2 BATTERY CABLE 10.75"	2
5	24-0034	#3 BATTERY CABLE 10.50"	1
6	24-0035	#4 BATTERY CABLE 10.00"	2
7	53-0003	BATTERY TRAY	1
8	24-0036	#5 BATTERY CALBE 5.00"	1
9	11-0002	STEEL HEX HEAD BOLT 5/16"-18 x 1.00"	16
10	11-0034	5/16 FLAT WASHER	16
11	11-0067	5/16-18 HEX FINISH NUT	16
12	25-0007	BATTERY BOOT, RED (NOT SHOWN)	16
13	25-0008	BATTERY BOOT, BLACK (NOT SHOWN)	16
14	25-0010	BATTERY FLIP CAP	24
15	25-0026	PLUG CAP	1

Seat & Brake Assembly



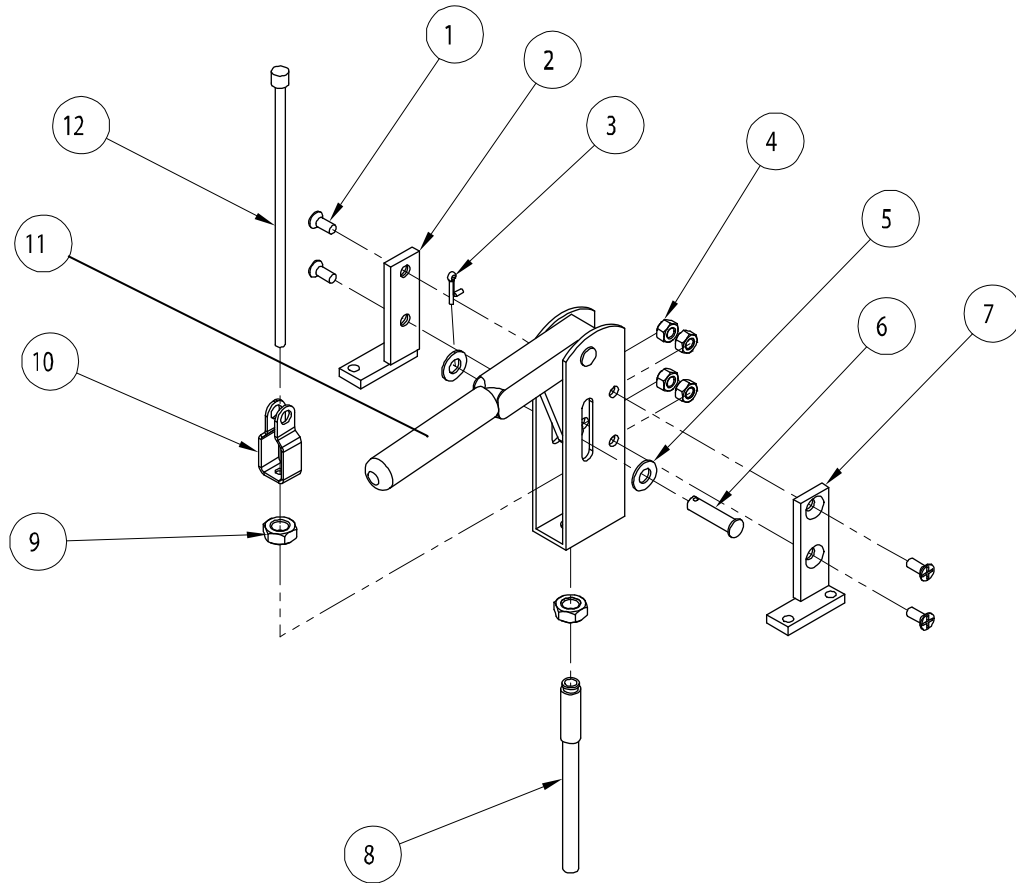
ITEM NO.	PART NUMBER	DESCRIPTION	QTY.
1	13-0049	SEAT ASSY. WITH ARM RESTS AND SAFETY BELT	1
2	11-0071	M8 SPLIT LOCK WASHER	4
3	11-0111	ALLOY STEEL SOCKET HEAD CAP SCREW M8-1.25X20MM	4
4	11-0049	STEEL PAN HEAD PHILLIPS MS #10-24X.75	4
5	11-0072	#10 SPLIT LOCK WASHER	4
6	11-0024	1/4-20 NYLOCK NUT	4
7	11-0121	STEEL HEX CAP BOLT 1/4-20X1.00	4
8	Page 8	EMERGENCY BRAKE HANDLE ASSY	1
9	53-0040	EMERGENCY BRAKE COVER	1

Console Assembly



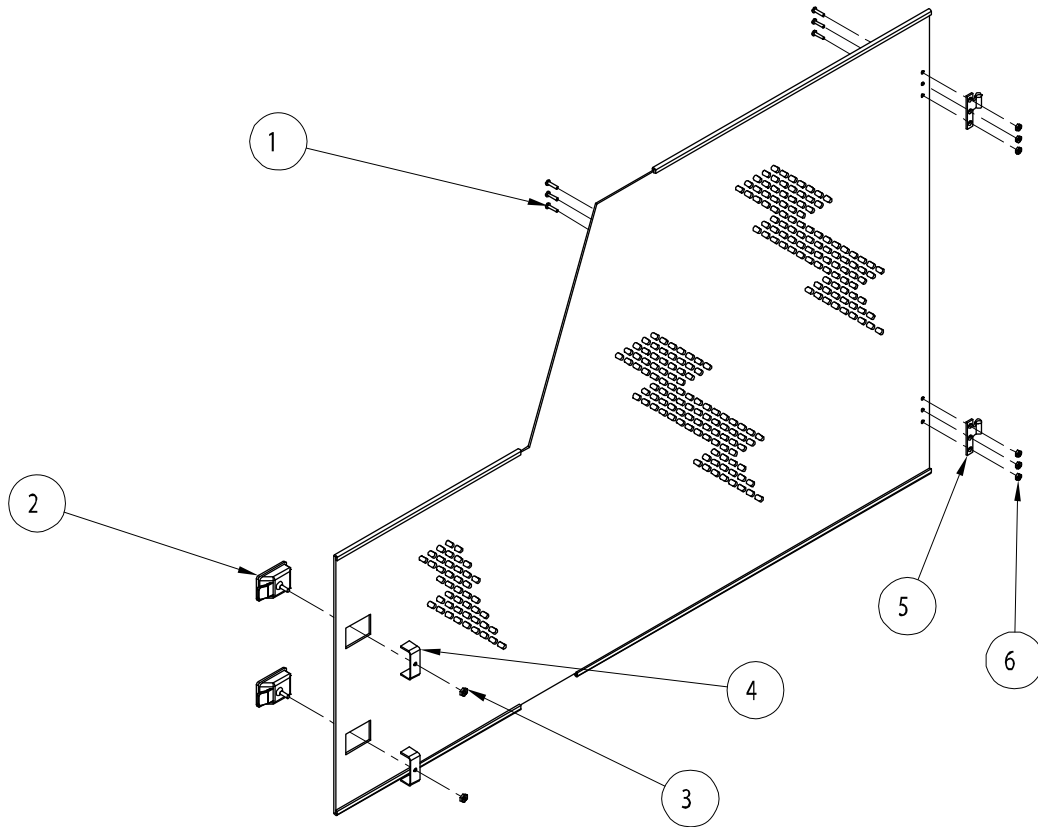
ITEM NO.	PART NUMBER	DESCRIPTION	QTY.
1	52-0012	CONSOLE	1
2	25-0003	SPEED POTPOTENTIOMETER KNOB WITH SET SCREW	1
3	61-0050	SPEED POTENTIOMETER STICKER	1
4	22-0001	SPEED POTENTIOMETER & NUT	1
5	23-0031	MAIN POWER SWITCH, NOB, & HARDWARE ASSY	1
6	11-0102	STEEL PAN HEAD PHILLIPS MACHINE SCREW #8-32 x .625"	6
7	11-0032	#8 FLAT WASHER	6
8	13-0033	CONSOLE HINGE	2
9	11-0022	#8-32 NYLOCK NUT	6
10	61-0052	HYDRAULIC OIL TEMPERATURE STICKER	1
11	25-0002	HYDRAULIC OIL TEMPERATURE LIGHT	1
12	13-0002	CONSOLE LATCH ASSYEMBLY	2
13	23-0030	DIGITAL READ OUT	1

Emergency Brake Handle Assembly



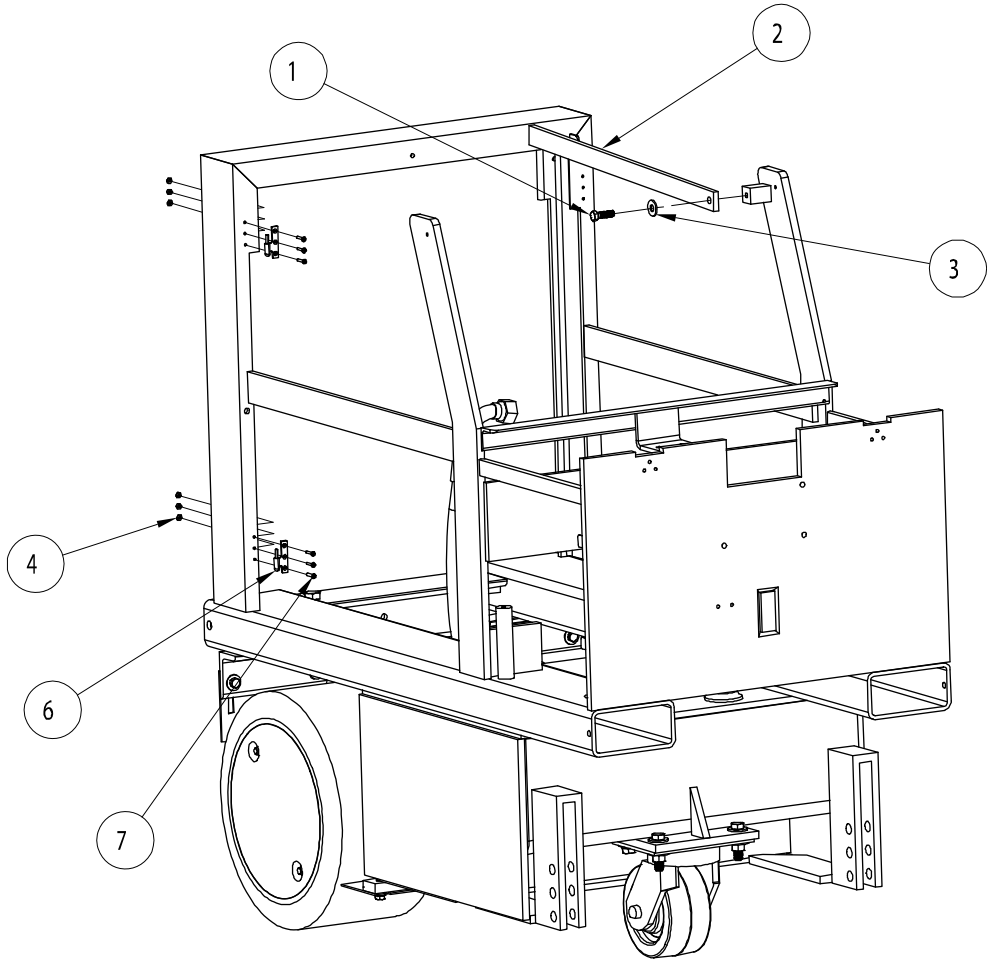
ITEM NO.	PART NUMBER	DESCRIPTION	QTY.
1	11-0206	STEEL FLAT HEAD PHILLIPS MS 5/16"-18 x .50"	4
2	53-0160	EMERGENCY BRAKE HANDLE BRACKET, RIGHT	1
3	13-0050	1/16" COTTER PIN	1
4	11-0025	5/16"-18 NYLOCK NUT	4
5	13-0050	3/8" S.A.E. FLAT WASHER	2
6	13-0050	EMERGENCY BRAKE CABLE 3/8" CLEVIS PIN	1
7	53-0161	EMERGENCY BRAKE HANDLE BRACKET, LEFT	1
8	13-0023	EMERGENCY BRAKE CABLE HOUSING	1
9	13-0023	EMERGENCY BRAKE CABLE HOUSING NUT	1
10	13-0027	EMERGENCY BRAKE CABLE YOKE END	1
11	13-0050	EMERGENCY BRAKE LEVER	1
12	13-0023	EMERGENCY BRAKE CABLE	1

Left & Right Door Assembly



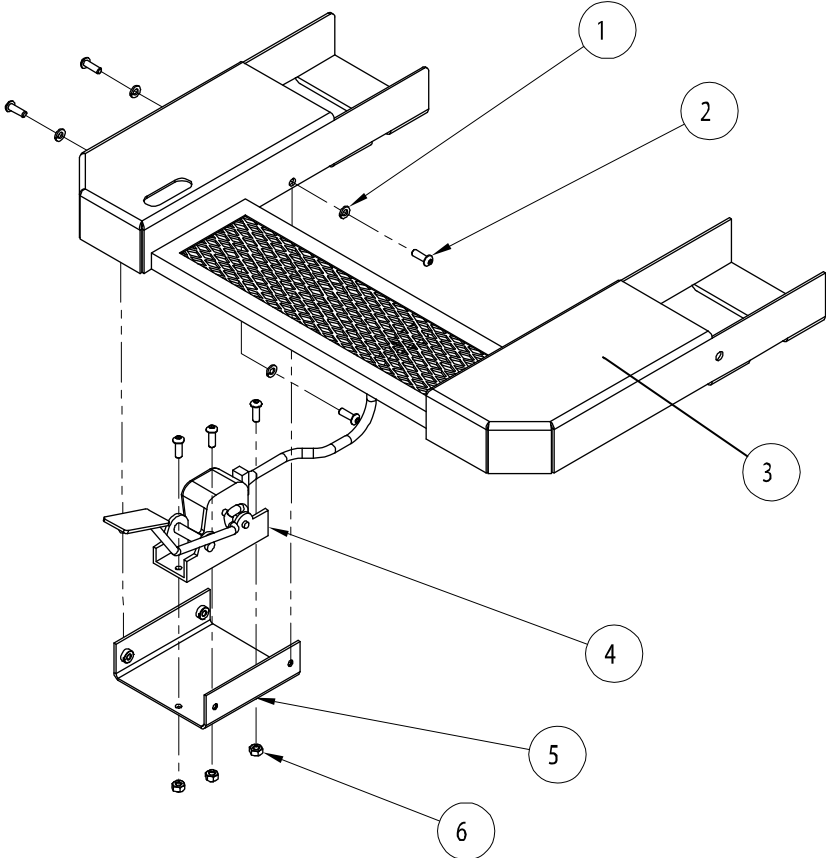
ITEM NO.	PART NUMBER	DESCRIPTION	QTY.
1	11-0085	STEEL PAN HEAD PHILLIPS #6-32 x .50"	12
2	13-0006	DOOR LATCH	2
3	13-0006	#10-32 NYLOCK NUT	4
4	13-0006	DOOR LATCH RETAINER	2
5	13-0012	RIGHT SIDE DOOR HINGE PART A	2
6	11-0021	#6-32 NYLOCK NUT	12
7	13-0011	LEFT SIDE DOOR HINGE PART A (NOT SHOWN)	2
8	52-0011	RIGHT SIDE DOOR	1
9	52-0022	LEFT SIDE DOOR (NOT SHOWN)	1

Door Hinge & Hood Arm Assembly



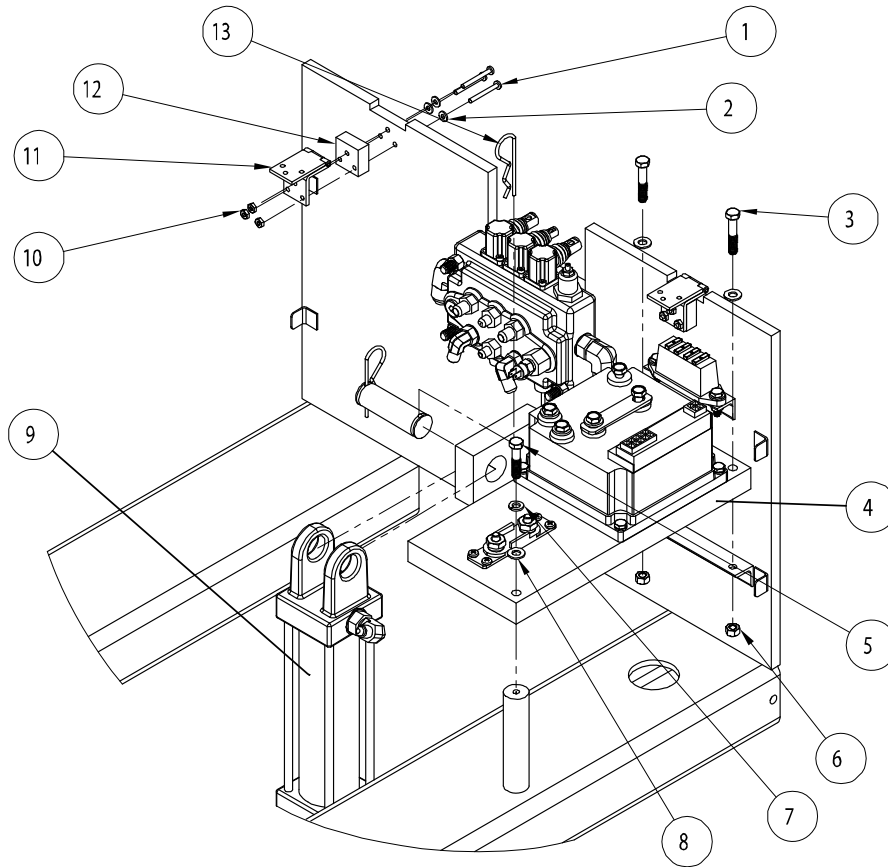
ITEM NO.	PART NUMBER	DESCRIPTION	QTY.
1	11-0008	STEEL HEX CAP BOLT 3/8"-16 x 1.50"	1
2	51-0119	HOOD ARM	1
3	11-0035	3/8" FLAT WASHER	1
4	11-0021	#6-32 NYLOCK NUT	12
5	13-0011	LEFT SIDE DOOR HINGE PART B	2
6	13-0012	RIGHT SIDE DOOR HINGE PART B	2
7	11-0057	STEEL PAN HEAD PHILLIPS M.S. #6-32 x .75"	12

Foot Rest Assembly



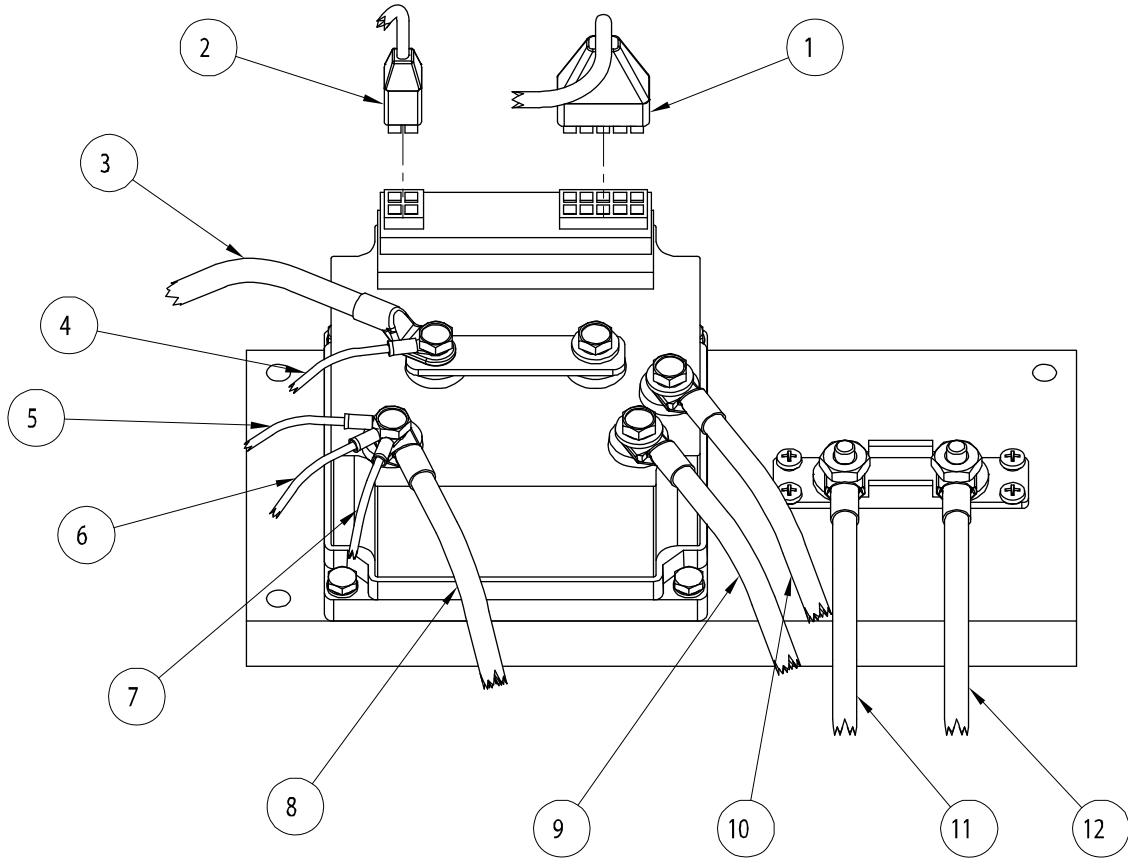
ITEM NO.	PART NUMBER	DESCRIPTION	QTY.
1	11-0069	1/4" SPLIT LOCK WASHER	4
2	11-0156	STEEL, BUTTON HEAD SOCKET CAP SCREW 1/4"-20 x .75"	7
3	53-0155	FOOT REST	1
4	23-0016	FOOT PEDAL	1
5	52-0018	FOOT PEDAL MOUNT BRACKET	1
6	11-0024	1/4"-20 NYLOCK NUT	3

Electronic Control & Front Cylinder Assembly



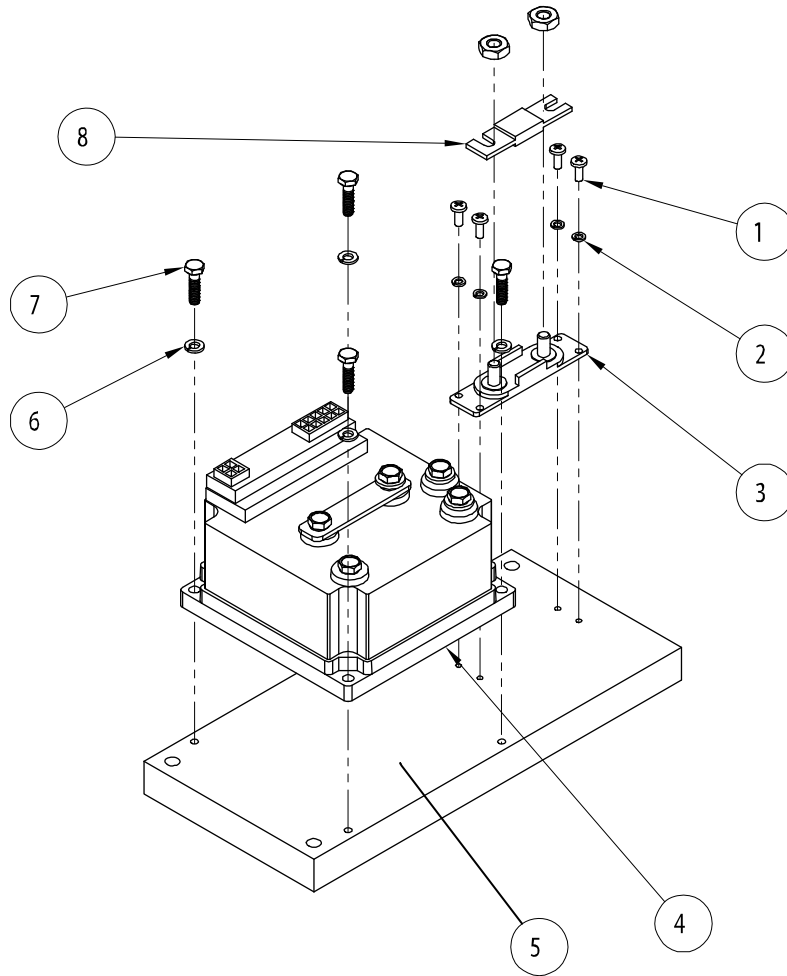
ITEM NO.	PART NUMBER	DESCRIPTION	QTY.
1	11-0075	STEEL PAN HEAD PHILLIPS MS #8-32 x 1.50"	6
2	11-0032	#8 FLAT WASHER	6
3	11-0175	STEEL HEX HEAD BOLT 5/16"-18 x 1.75"	2
4	Page 14	ELECTRONIC CONTROL MODULE ASSEMBLY	1
5	11-0003	STEEL HEX HEAD BOLT 5/16"-18 x 1.50"	1
6	11-0025	5/16 NYLOCK NUT	2
7	11-0040	5/16" SPLIT LOCK WASHER	1
8	11-0034	5/16" FLAT WASHER	3
9	96-0171	HYDRAULIC CYLINDER ASSEMBLY	1
10	11-0022	#8 NYLOCK NUT	6
11	13-0033	CONSOLE HINGE	2
12	51-0260	HINGE SPACER	2
13	11-0052	HITCH PIN	2

Electric Control Wiring Assembly



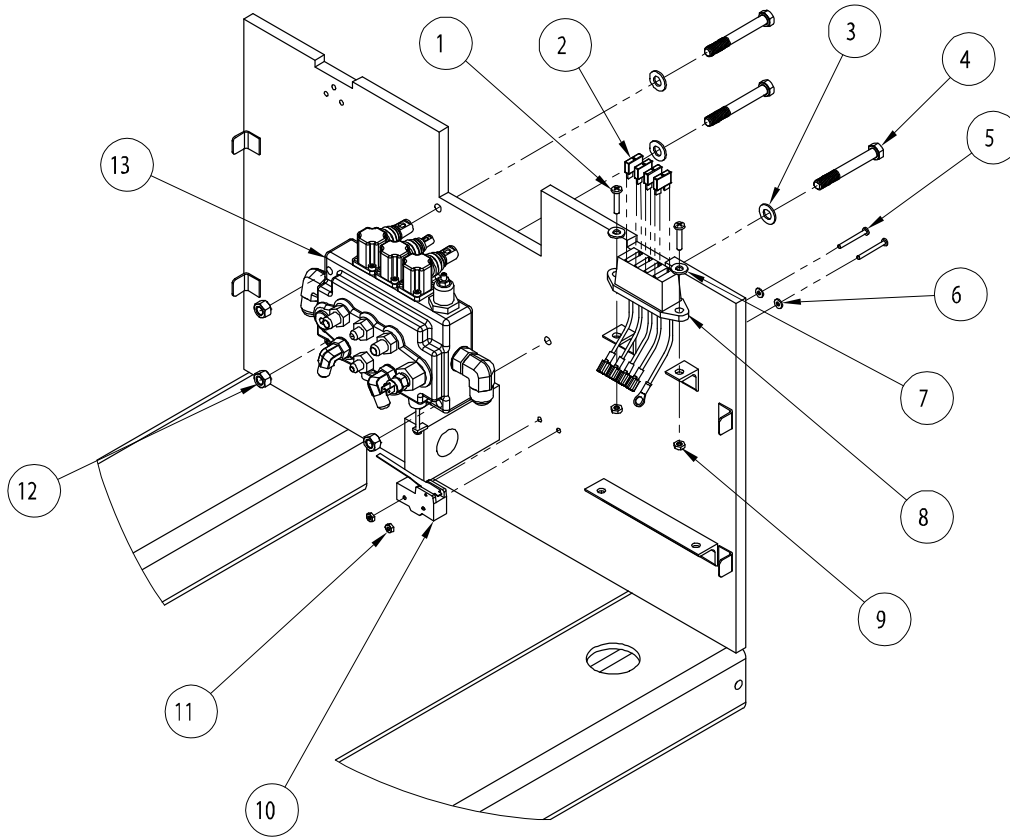
ITEM NO.	PART NUMBER	DESCRIPTION	QTY.
1	24-0122	MAIN HARNESS TO CONTROL MODULE	1
2	25-0013	DISPLAY HARNESS, T-2000E	1
3	24-0124	MAIN POWER SWITCH TO CONTROL MODULE WIRE	1
4	25-0027	FUSE BLOCK POWER WIRE TO CONTROL MODULE	1
5	24-0125	OIL TEMP SWITCH GROUND TO CONTROL MODULE	1
6	24-0122	FOOT PEDAL GROUND TO CONTROL MODULE	1
7	24-0131	BACKUP ALARM/STROBE LIGHT GROUND TO CONTROL MODULE	1
8	24-0126	PLUG GROUND TO CONTROL MODULE	1
9	24-0127	MOTOR POSITIVE TO CONTROL MODULE	1
10	24-0128	MOTOR NEGATIVE TO CONTROL MODULE	1
11	24-0129	250 AMP FUSE TO MAIN POWER SWITCH	1
12	24-0130	PLUG POSITIVE TO 275 AMP FUSE	1

Electronic Control Module Assembly



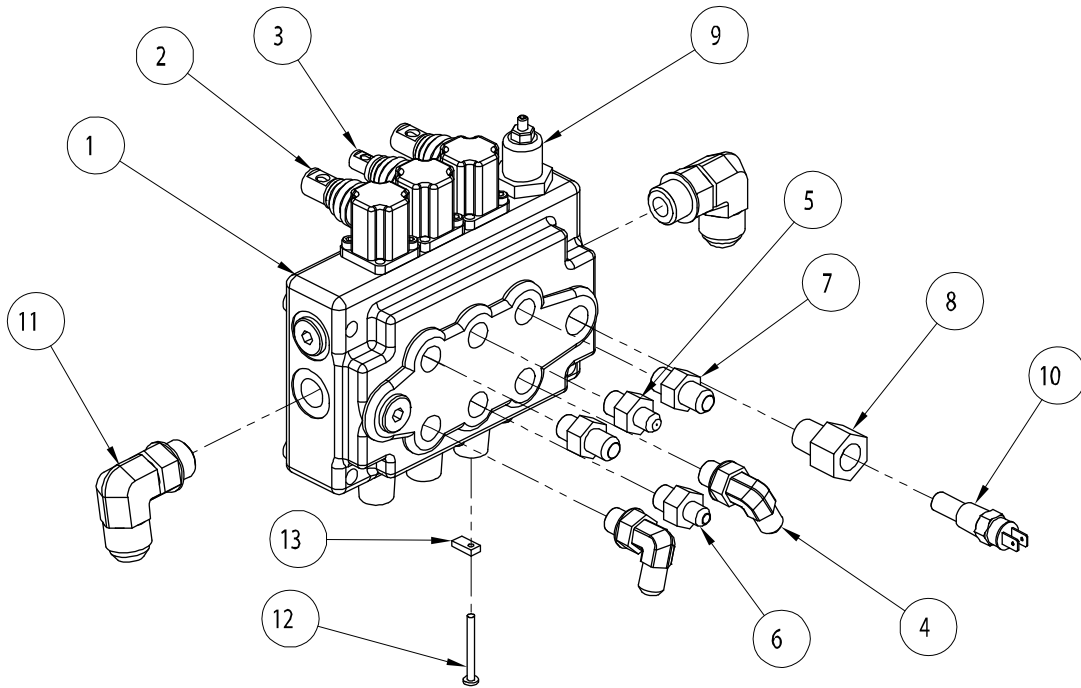
ITEM NO.	PART NUMBER	DESCRIPTION	QTY.
1	11-0050	STEEL PAN HEAD PHILLIPS M.S. #10-24 x .75"	4
2	11-0072	#10 SPLIT LOCK WASHER	4
3	23-0009	FUSE HOLDER	1
4	23-0032	ELECTRONIC CONTROL MODULE	1
5	51-0088	MOUNTING PLATE	1
6	11-0069	1/4" SPLIT LOCK WASHER	4
7	11-0121	STEEL HEX CAP BOLT 1/4"-20 x 1.00"	4
8	23-0010	275 AMP MAIN FUSE	1

Fuse Block & Valve



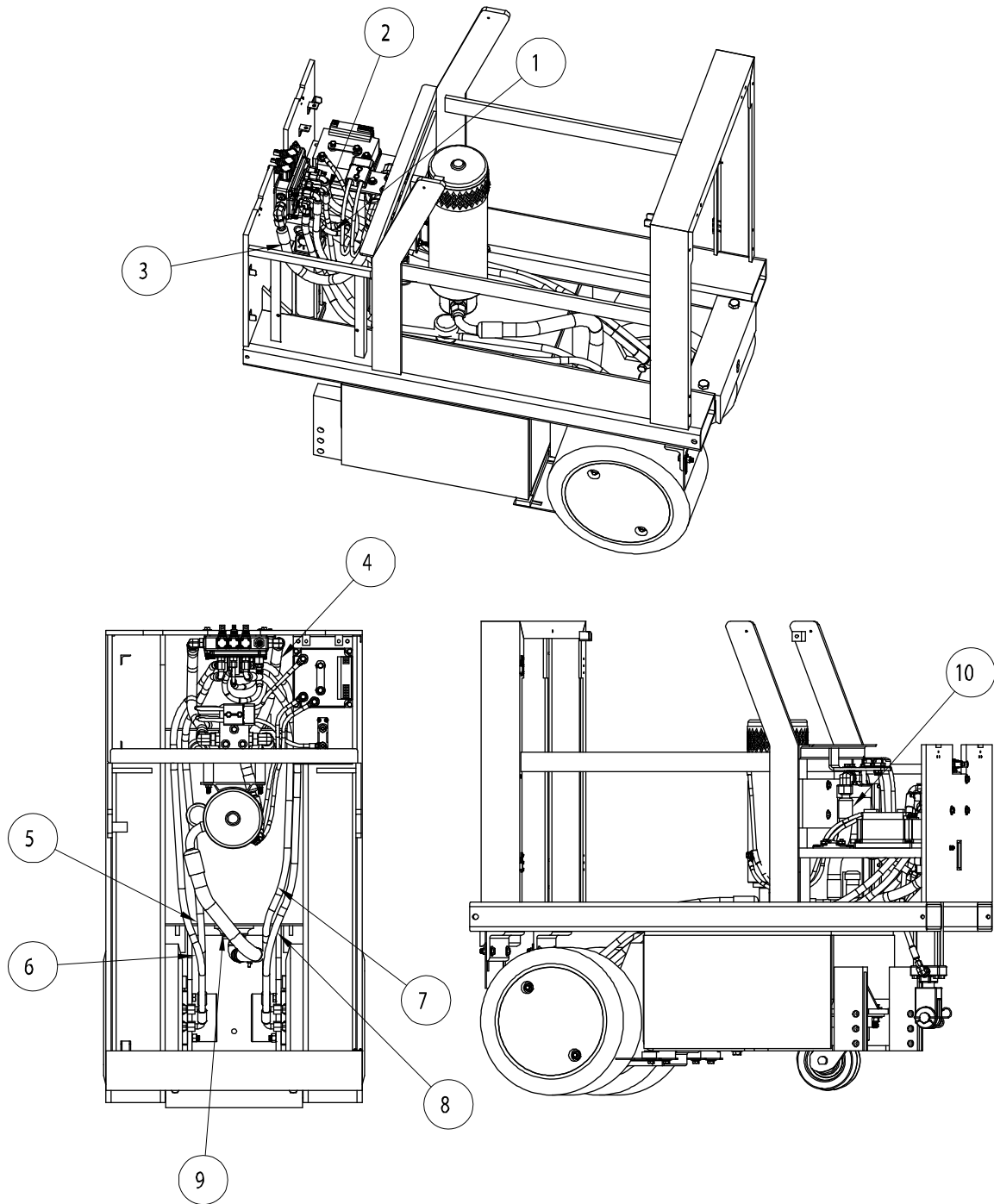
ITEM NO.	PART NUMBER	DESCRIPTION	QTY.
1	11-0121	STEEL PAN HEAD PHILLIPS MS, 10-24 x 1.00	2
2	25-0053	5 AMP FUSE	4
3	11-0034	5/16" FLAT WASHER	3
4	11-0005	STEEL HEX CAP BOLT 5/16-18 x 3.00"	3
5	11-0101	STEEL PAN HEAD PHILLIPS MS #6-32 x 1.50"	2
6	11-0185	#6 FLAT WASHER	2
7	11-0033	#10 FLAT WASHER	2
8	23-0096	FUSE BLOCK ASSY.	1
9	11-0024	#10-24 NYLOCK NUT	2
10	22-0002	BACK UP ALARM SWITCH	1
11	11-0021	#6-32 NYLOCK NUT	2
12	11-0026	5/16"-18 NYLOCK NUT	3
13	Page 16	HYDRAULIC VALVE ASSY	1

Hydraulic Control Valve Assembly



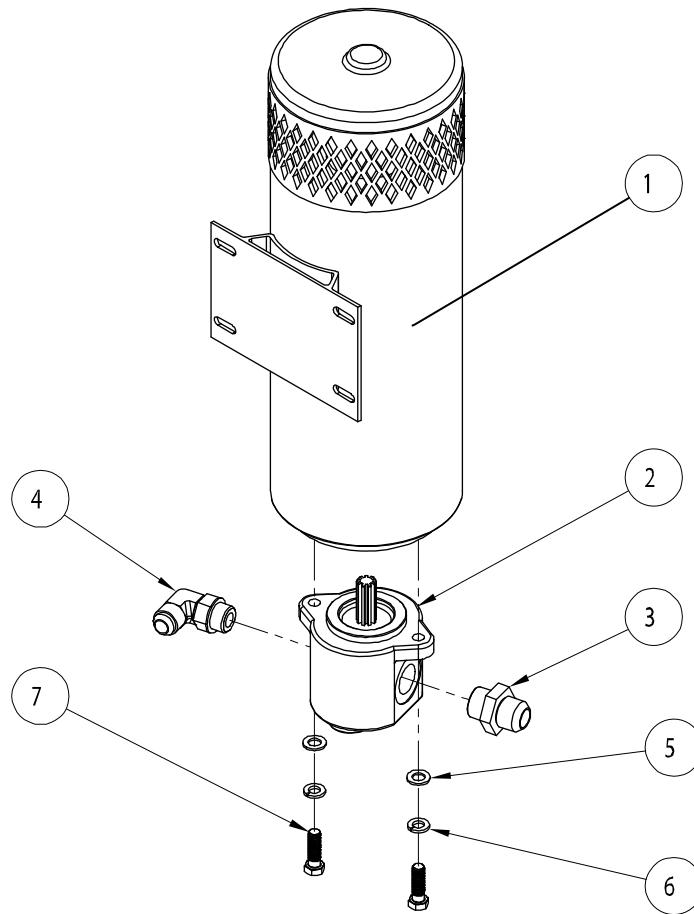
ITEM NO.	PART NUMBER	DESCRIPTION	QTY.
1	35-0042	HYDRAULIC CONTROL VALVE	1
2	32-0002	VALVE SPOOL CAP (LARGE)	2
3	32-0003	VALVE SPOOL CAP (SMALL)	1
4	31-0056	90° #6SAE TO #6JIC FITTING	2
5	31-0022	#4 JIC TO #6 SAE ORING REDUCER FITTING	1
6	31-0024	STRAIGHT #4 JIC TO #6 SAE ORING FITTING	1
7	31-0046	STRAIGHT #6 JIC TO #6 SAE ORING REDUCER FITTING	2
8	31-0045	OIL TEMPERATURE SWITCH ADDAPTER	1
9	35-0018	PREASURE BYPASS VALVE	1
10	22-0007	HYDRAULIC OIL TEMP. SENDING UNIT 160° T-2000EI	1
11	31-0048	90° #10JIC TO #8 SAE ORING REDUCER FITTING	2
12	11-0101	STEEL PHILLIPS PAN HEAD MACHINE SCREW#6-32 x 1.50"	1
13	51-0598	BACK UP ALARM ACTIVATOR TAB	1

Hydraulic Hose Assembly



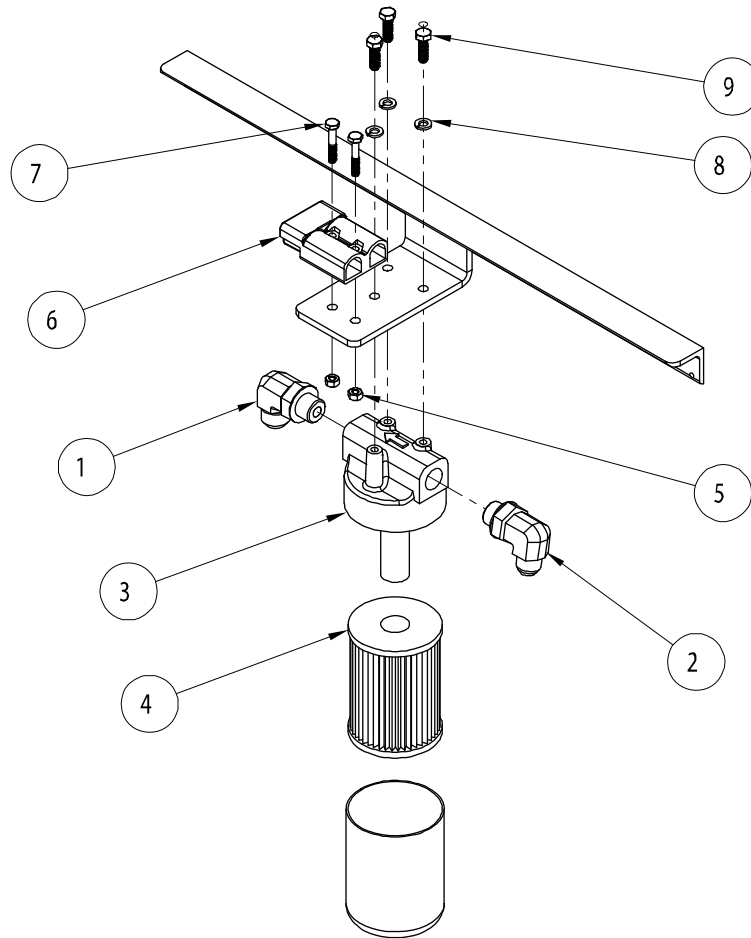
ITEM NO.	PART NUMBER	DESCRIPTION	QTY.
1	31-0018	BOTTOM CYLINDER HOSE	1
2	31-0008	TOP CYLINDER HOSE	1
3	31-0066	VALVE TO FILTER HOSE	1
4	31-0005	PUMP TO VALVE HOSE	1
5	31-0015	LEFT, FRONT TO TOP LEFT, WHEEL MOTOR HOSE	1
6	31-0174	LEFT, REAR TO BOTTOM LEFT, WHEEL MOTOR HOSE	1
7	31-0007	RIGHT, REAR TO TOP RIGHT, WHEEL MOTOR HOSE	1
8	31-0176	RIGHT, FRONT TO BOTTOM RIGHT, WHEEL MOTOR HOSE	1
9	31-0175	SUCTION HOSE, TANK TO PUMP	1
10	31-0012	FILTER TO TANK RETURN HOSE	1

Electric Motor & Pump Assembly



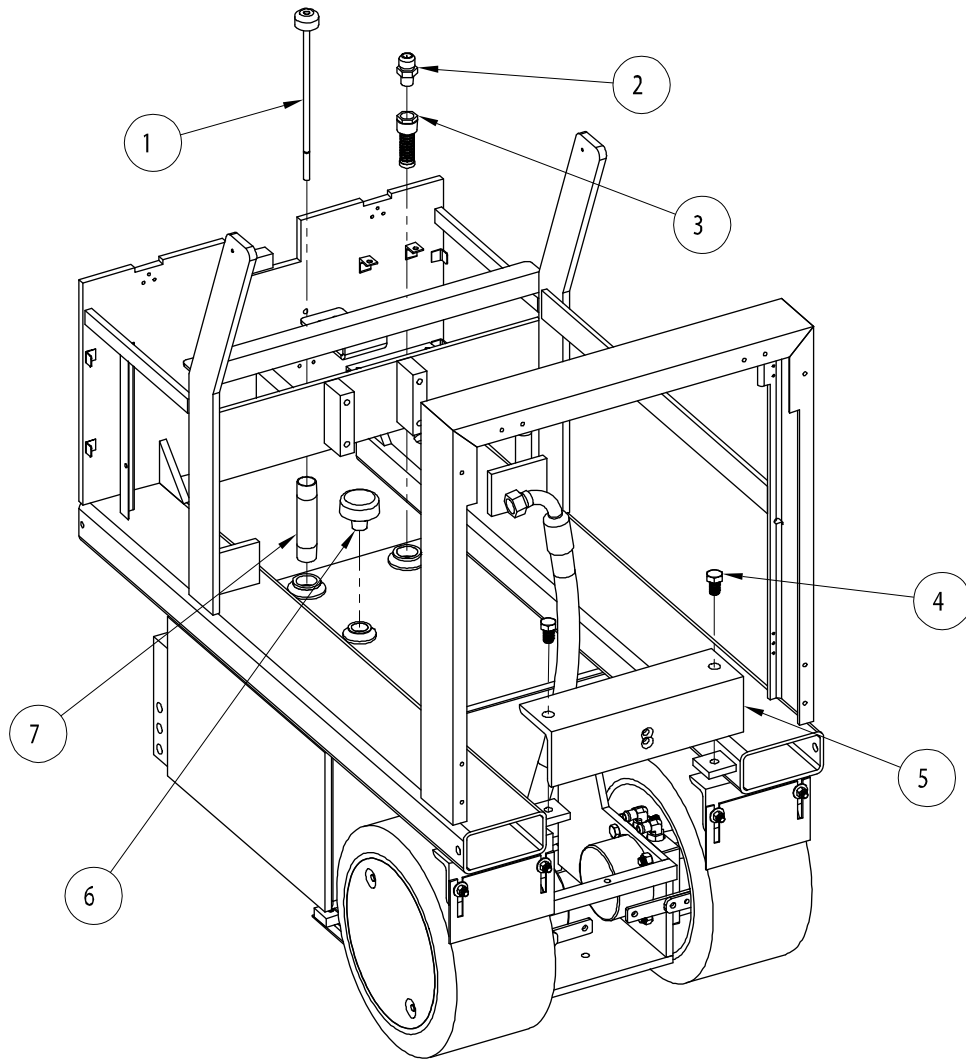
ITEM NO.	PART NUMBER	DESCRIPTION	QTY
1	23-0002	48 VOLT ELECTRIC MOTOR	1
2	31-0020	T-2000EI GEAR PUMP	1
3	31-0072	STRAIGHT, #16 JIC TO #12 SAE ORING FITTING	1
4	31-0038	90° #10 JIC TO #10 SAE ORING FITTING	1
5	11-0129	3/8" SPLIT LOCK WASHER	2
6	11-0126	3/8" SAE FLAT WASHER	2
7	11-0089	STEEL HEX CAP BOLT 3/8"-24 x 1.25"	2

Hydraulic Oil Filter Assembly



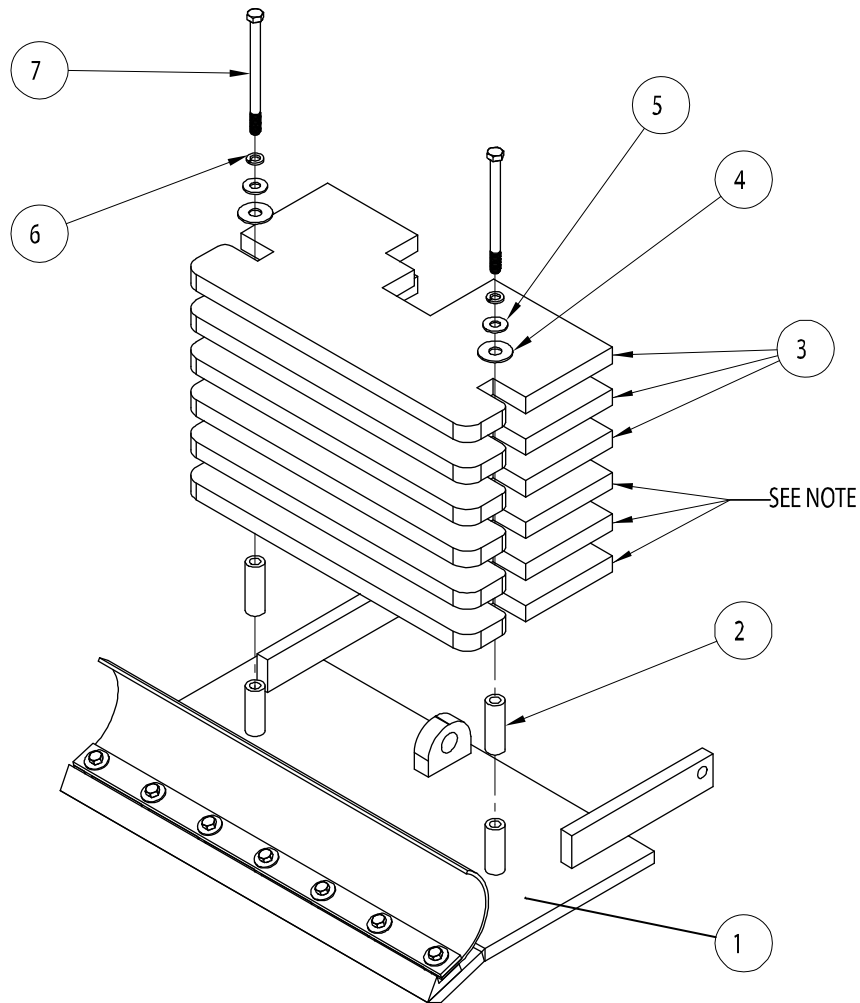
ITEM NO.	PART NUMBER	DESCRIPTION	QTY.
1	31-0053	90° #12 JIC TO #12 SAE O-RING FITTING	1
2	31-0052	90° #10 JIC TO #12 SAE O-RING FITTING	1
3	32-0007	OIL FILTER ASSEMBLY T-2000EI	1
4	32-0008	REPLACEMENT OIL FILTER CARTRIDGE	1
5	11-0024	1/4"-20 NYLOCK NUT	2
6	24-0133	PLUG TO CONTROL MODULE CABLE ASSEMBLY	1
7	11-0055	STEEL, HEX HEAD BOLT, 1/4"-20 x 1.50"	2
8	11-0040	5/16" SPLIT LOCK WASHER	3
9	11-0002	STEEL, HEX HEAD BOLT, 5/16-18 x 1.00"	3

Hydraulic Tank Fitting Assembly



ITEM NO.	PART NUMBER	DESCRIPTION	QTY.
1	53-0044	HYDRAULIC OIL DIP STICK ASSY	1
2	31-0047	STRAIGHT #12 JIC TO .50" NPT FITTING	1
3	35-0022	HYDRAULIC OIL DIFFUSER	1
4	11-0235	STEEL, HEX HEAD BOLT, 5/8"-11 x 1.00"	2
5	51-0092	REAR WEIGHT MOUNT BRACKET	1
6	35-0021	3 PSI HYDRAULIC OIL TANK PRESSURE VENT CAP	1
7	35-0034	1.00" x 6.00" PIPE NIPPLE	1

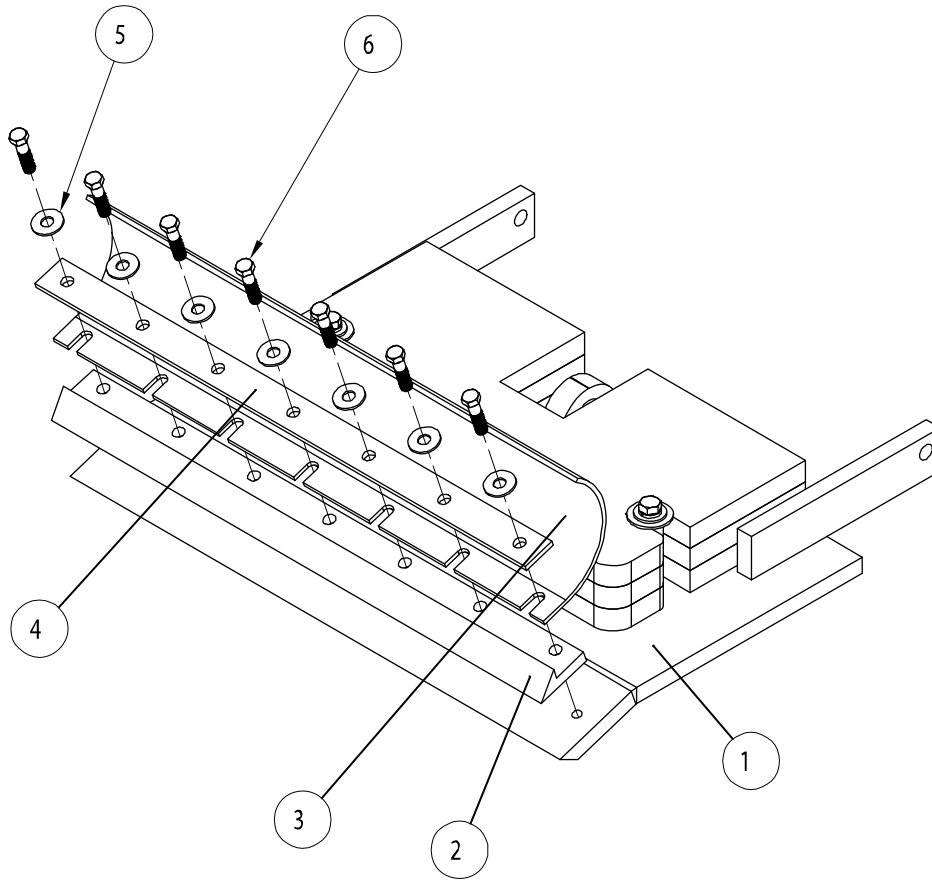
Front Blade Assembly – Double Weight Package



NOTE: FIRST 3 WEIGHTS ARE PART OF T-2000EI JAW ASSEMBLY

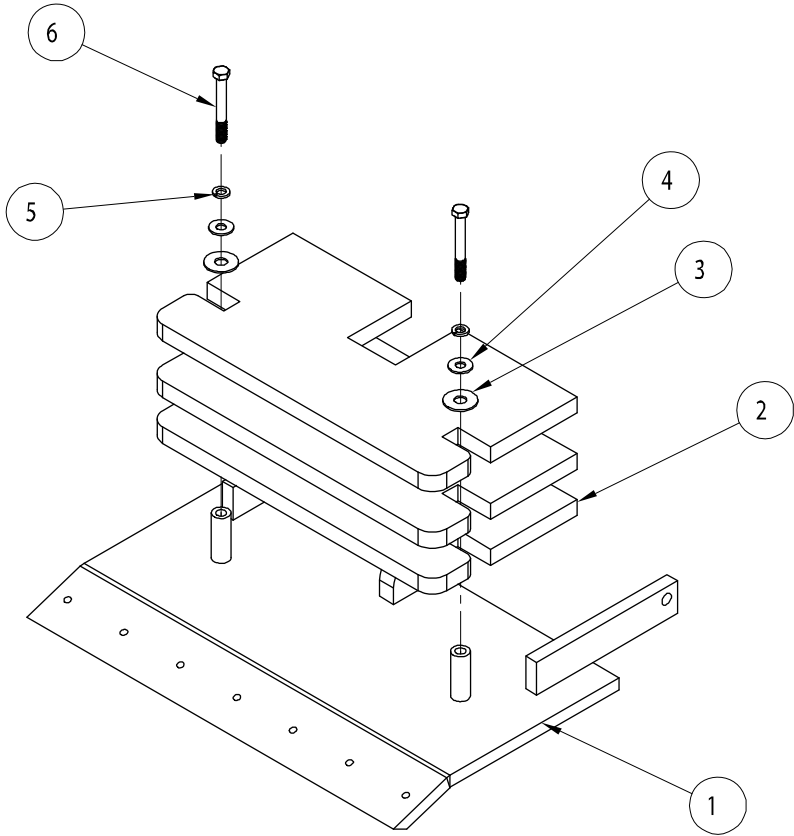
ITEM NO.	PART NUMBER	DESCRIPTION	QTY.
1	Page 21	T-2000EI JAW ASSEMBLY	1
2	51-0283	3" THREAD PROTECTOR TUBE	2
3	53-0163	DOUBLE WEIGHT PACK WEIGHT	3
4	11-0148	5/8" USS FLAT WASHER	2
5	11-0230	1/2" USS FLAT WASHER	2
6	11-0041	1/2" LOCK WASHER	2
7	11-0087	STEEL, HEX CAP BOLT, 1/2"-13 x 7.00"	2

Front Scoop & Blade Holder Assembly



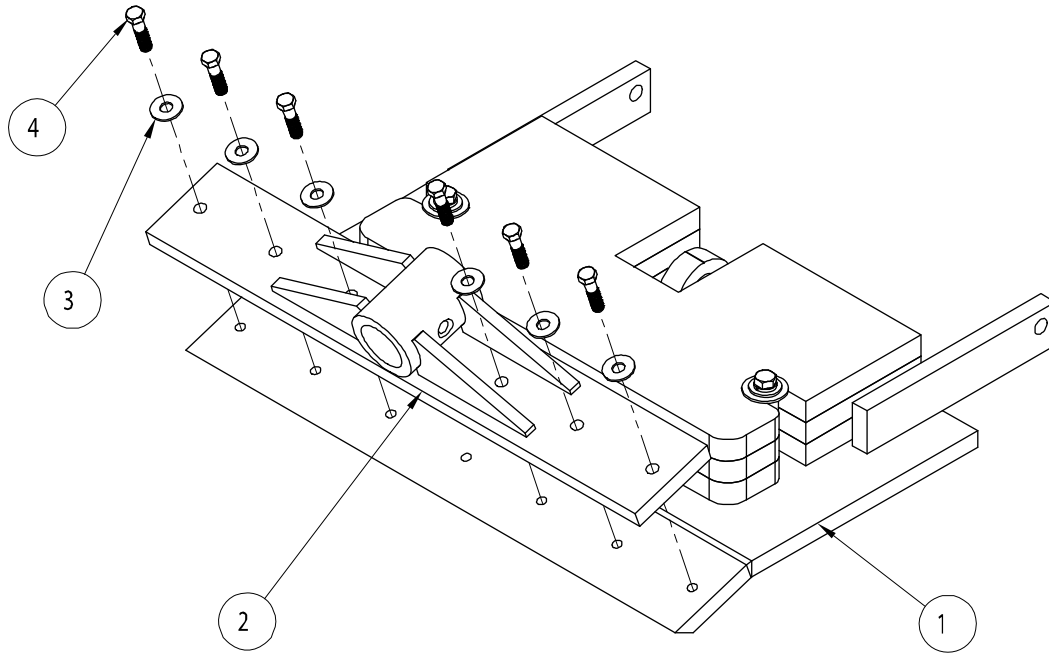
ITEM NO.	PART NUMBER	DESCRIPTION	QTY.
1	Page 21	FRONT JAW ASSEMBLY WITH WEIGHTS	1
2	53-0144	BLADE CLAMP HALF ARROW	1
3	53-0039	SCOOP ASSEMBLY	1
4	51-0298	SCOOP HOLD DOWN BAR	1
6	11-0036	7/16" FLAT WASHER	7
7	11-0010	STEEL, HEX CAP BOLT, GR.8, 7/16"-20 x 1.75"	7

Front Weight Assembly



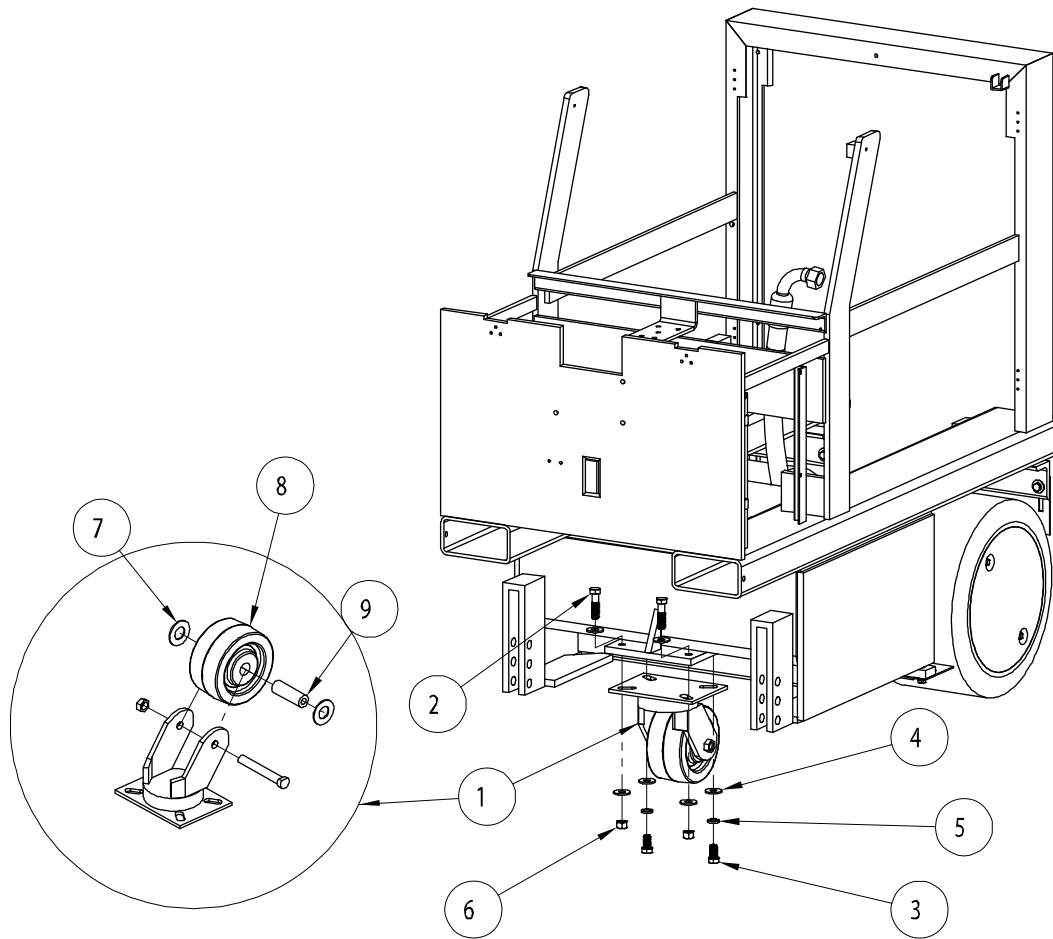
ITEM NO.	PART NUMBER	DESCRIPTION	QTY.
1	53-0035	JAW ASSEMBLY	1
2	53-0162	STANDARD FRONT WEIGHT	3
3	11-0148	5/8" FLAT WASHER	2
4	11-0230	1/2" FLAT WASHER	2
5	11-0041	1/2" LOCK WASHER	2
6	11-0014	STEEL, HEX CAP BOLT, 1/2-13 x 4.50"	2

Swivel Head Receiver Installation



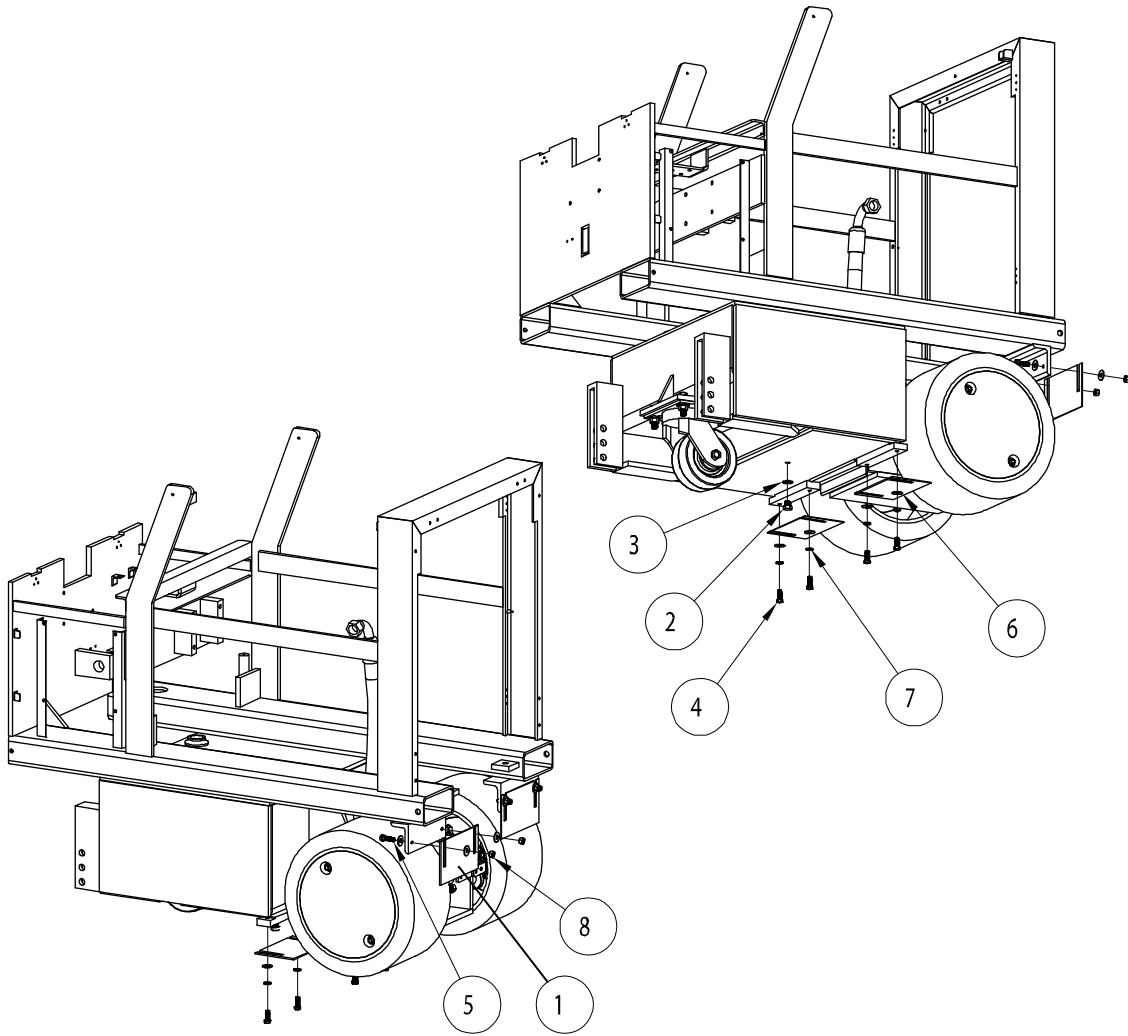
ITEM NO.	PART NUMBER	DESCRIPTION	QTY.
1	Page 24	FRONT JAW ASSEMBLY WITH WEIGHTS	1
2	81-0022	BOLT DOWN STYLE SWIVEL HEAD RECIVER	1
3	11-0036	7/16" FLAT WASHER	6
4	11-0010	STEEL, HEX CAP BOLT, GR 8, 7/16"-20 x 1.75"	6

Caster Wheel Assembly



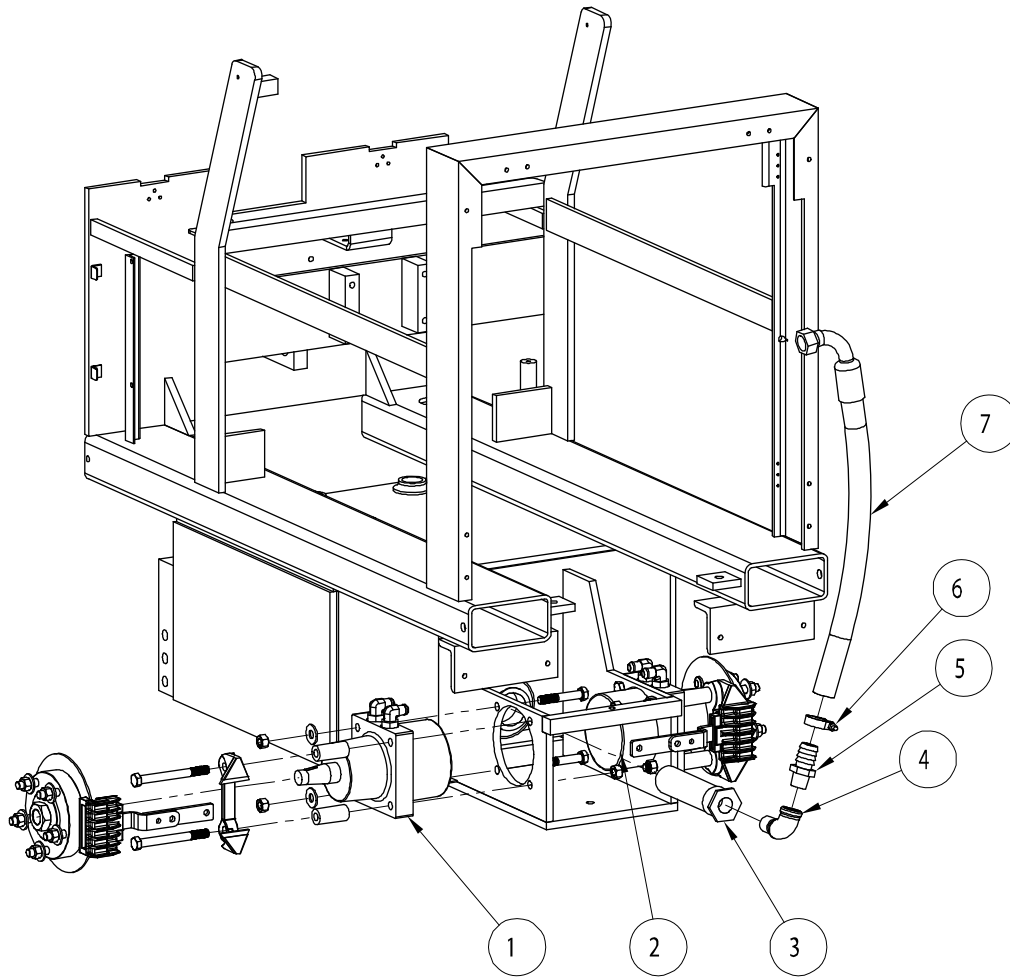
ITEM NO.	PART NUMBER	DESCRIPTION	QTY.
1	13-0008	CASTER WHEEL ASSY	1
2	11-0012	STEEL HEX CAP BOLT 1/2"-13 x 2.00"	2
3	11-0177	STEEL HEX CAP BOLT 1/2"-13 x 1.00"	2
4	11-0230	1/2" FLAT WASHER	6
5	11-0041	1/2" LOCK WASHER	2
6	11-0028	1/2"-13 NYLOCK NUT	2
7	13-0041	REPLACEMENT-CASTER WHEEL	1
8	13-0042	REPLACEMENT-CASTER SLEEVE	1
9	13-0044	REPLACEMENT-SHOULDER STYLE CASTER WASHER	2

Wheel Scraper Assembly



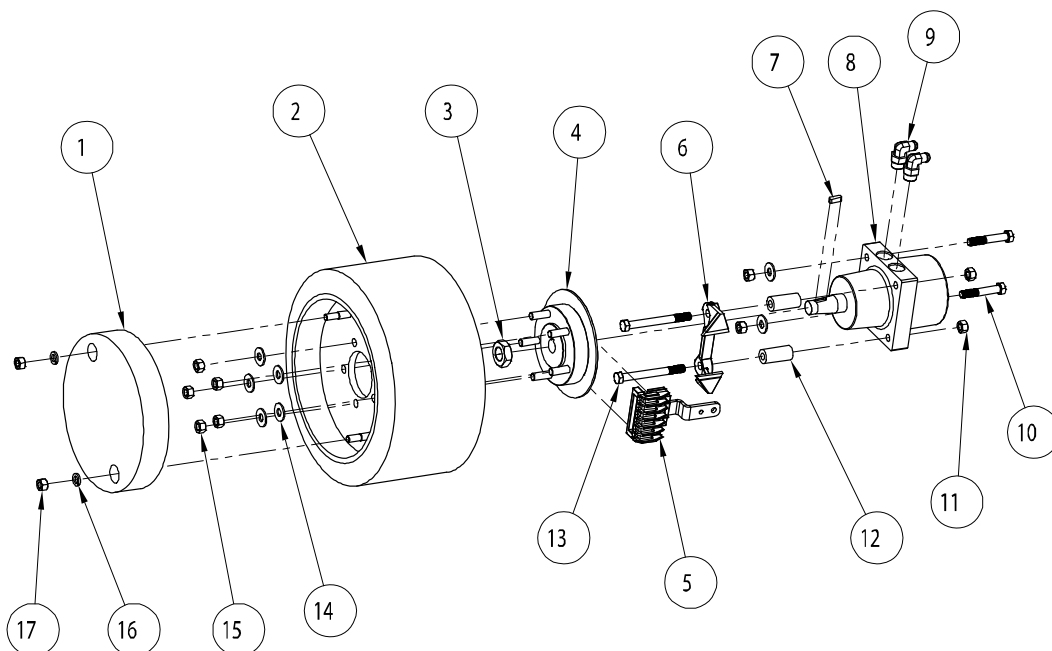
ITEM NO.	PART NUMBER	DESCRIPTION	QTY.
1	81-0091	WHEEL SCRAPER	4
2	35-0014	HYDRAULIC OIL TANK DRAIN PLUG 1/2"-20 x .50"	1
3	35-0014	HYDRAULIC OIL TANK DRAIN PLUG WASHER	1
4	11-0007	STEEL HEX CAP BOLT 3/8"-16 x 1.00"	4
5	11-0008	STEEL HEX CAP BOLT 3/8"-16 x 1.50"	4
6	11-0035	3/8" FLAT WASHER	12
7	11-0129	3/8" LOCK WASHER	4
8	11-0026	3/8"-16 NYLOCK NUT	4

Wheel Motor Assembly Installation



ITEM NO.	PART NUMBER	DESCRIPTION	QTY.
1	Page 29	LEFT WHEEL MOTOR ASSEMBLY	1
2	Page 29	RIGHT WHEEL MOTOR ASSEMBLY	1
3	35-0023	HYDRAULIC TANK SUCTION STRAINER	1
4	35-0006	1.00" 90° STREET ELBOW	1
5	31-0055	1.00" N.P.T. TO #16 BARBED HOSE END	1
6	35-0024	DIXON T-BOLT PIPE CLAMP FOR SUCTION HOSE	1
7	31-0175	SUCTION HOSE	1

Wheel Motor Assembly



ITEM NO.	PART NUMBER	DESCRIPTION	QTY.
1	51-0055	2" WHEEL WEIGHT (T-2000EI)	1
2	53-0208	2" OFFSET MAIN DRIVE WHEEL (T-2000EI)	1
3	35-0013	WHEEL MOTOR PACK NUT	1
4	70-0016	HEAVY DUTY WHEEL HUB WITH BRAKE ROTOR	1
5	53-0194 53-0195	E-BRAKE CALIPER LEFT E-BRAKE CALIPER RIGHT	1 1
6	13-0022	E-BRAKE CALIPER MOUNT	1
7	34-0006	WHEEL MOTOR SHAFT KEY	1
8	33-0002 33-0003	LEFT WHEEL MOTOR RIGHT WHEEL MOTOR	1 1
9	31-0053	#8 JIC TO #10 SAE ORING REDUCER FITTING	2
10	11-0013	STEEL HEX CAP BOLT 1/2"-13 x 3.00"	2
11	11-0028	1/2"-13" NYLOCK NUT	4
12	51-0492	BRAKE CALIPER BRACKET SPACER (T-2000EI)	2
13	11-0228	STEEL HEX CAP BOLT GR 8 1/2"-13 x 5.00"	2
14	11-0230	1/2" FLAT WASHER	7
15	11-0029	1/2"-20 NYLOCK NUT	5
16	11-0041	1/2" LOCK WASHER	7
17	11-0019	1/2"-13 FINISH HEX NUT	2

