



Bartell Morrison Inc.  
375 Annagem Blvd.,  
Mississauga, ON, Canada  
L5T 3A7  
Toll Free (N.A.): 1 866 501 1683  
Local +1 905 364 4200  
Fax: +1 905 364 4201

# *OWNER'S MANUAL AND PARTS BOOK*

**WALK BEHIND  
MATERIAL SPREADER  
MS20**



**ORIGINAL  
LANGUAGE**

Doc. # OIPB - M11205  
Orig. Rel. - 03/2015

# MS20 WALK BEHIND MATERIAL SPREADER OWNER'S MANUAL & PARTS BOOK

Bartell Morrison Inc.  
375 Annagem Blvd.  
Mississauga, Ontario, Canada  
L5T 3A7  
Toll Free (N.A.): (866) 501-1683  
Phone: (905) 364-4200  
Facsimile: (905) 364-4201  
www.bartellglobal.com

Bartell Morrison (USA) LLC  
200 Commerce Drive,  
Freehold, New Jersey, USA  
07728  
Toll Free: 888-999-1570  
Phone: (732) 566-5400  
Facsimile: (732) 566-5444  
www.bartellglobal.com

## ORIGINAL LANGUAGE PARTS MANUAL FOR WALK BEHIND MATERIAL SPREADER

© 2015 Bartell Morrison Inc.





No part of this work may be reproduced or transmitted in any form or by any means, electronic, or mechanical, including photocopying and recording, or by any information storage or retrieval system without the prior written permission of Bartell Morrison Inc., unless such copying is permitted by federal copyright laws.

Address inquiries or reference permission care of:

Bartell Morrison Inc.,  
375 Annagem Blvd.,  
Mississauga, Ontario,  
Canada, L5T 3A7

Revision	Date	Description	Approved By:

## SAFETY PRECAUTIONS

SAFETY PRECAUTIONS	
	<p> <b>CAUTION</b></p> <p><b>MOVING PARTS</b> Before using the machine ensure that all guards and safety devices are in place and functioning properly.</p>
	<p> <b>ATTENTION</b></p> <p><b>READ OWNER'S MANUAL</b> Read and understand operator's manual before using this machine. Failure to follow operating instructions could result in serious injury or death.</p>

**TABLE OF CONTENTS**

WALK BEHIND MATERIAL SPREADER WARRANTY.....5  
SPECIFICATIONS .....5  
PREVENTATIVE MAINTENANCE AND ROUTINE SERVICE PLAN .....6  
ROUTINE SERVICE .....7  
OPERATION .....7  
ASSEMBLY INSTRUCTIONS..... 8-9  
ASSEMBLY DRAWING AND PARTS LIST ..... 11-13  
NOTES ..... 14-15

**WARRANTY**

**WALK BEHIND MATERIAL SPREADER**

Bartell agrees to furnish without charge, F.O.B. our plant, a replacement for any part or portion thereof, the Material Spreader, to be defective in either material or workmanship within a period of twelve (12) months from date of purchase, provided that notice of such defective part or portion thereof is given to Bartell Morrison Inc. Within the twelve month warranty period. No further or other guarantee or warranty expressed or implied in connection with the sale of the Material Spreader is given and our sole liability consists in replacing defective parts or portions thereof. We shall not be responsible for any special, indirect or consequential damages arising in any manner whatsoever.

This guarantee is for the sole benefit of the original purchaser as end user. Our responsibility under this guarantee ends in the case the original purchaser transfers ownership of the Material Spreader, make any changes or adds any parts or devices not of our manufacture to the Material Spreader.

**SPECIFICATIONS**

<b>DIMENSIONS</b>	
Length (handle up)	95cm
Height (handle up)	93cm
Length (handle down)	65cm
Height (handle down)	62cm
Width	130cm
Discharge Width	99cm
Weight	60kg



## **ROUTINE SERVICE INTERVAL**

Due to the nature and environment of use, the Material Spreader could be exposed to severe operating conditions. Some general maintenance guidelines will extend the useful life of your machine.

- Regular service will prolong the life of the Material Spreader and prevent expensive repairs.
- Keeping your Material Spreader clean and free from debris is the single most important regular maintenance operation, over and above the checks in the service schedule that can be performed.
- After each use your Material Spreader should be emptied and cleaned to remove any dust and debris from the hopper, gate opening and surrounding components.
- Check the gate control handle for smooth operation.
- Failure to have your Material Spreader regularly serviced and properly maintained in accordance with the manufacturer's instructions will lead to premature failure and void the warranty.

## **OPERATION**

- Close the gate before adding any material into the hopper.
- Perform testing in order to determine a proper gate opening and proper working speed in relation to the desired quantity of material to be spread for the number of spreading passes.
- For best performance during spreading, keep the hopper over half full.

## ASSEMBLY INSTRUCTIONS

**Step 1:** Take wheels and spreader out of the box.

**Step 2:** The wheel mounting bolts will already be on the hubs for the wheels

**Step 3:** Mount wheels to the mounting plate and secure mounting bolts



**Step 4:** Material Spreader shown with handle in the folded down position.



**Step 5:** Raise handle and align slot with stud.





**Step 6:** Slide slot onto the stud

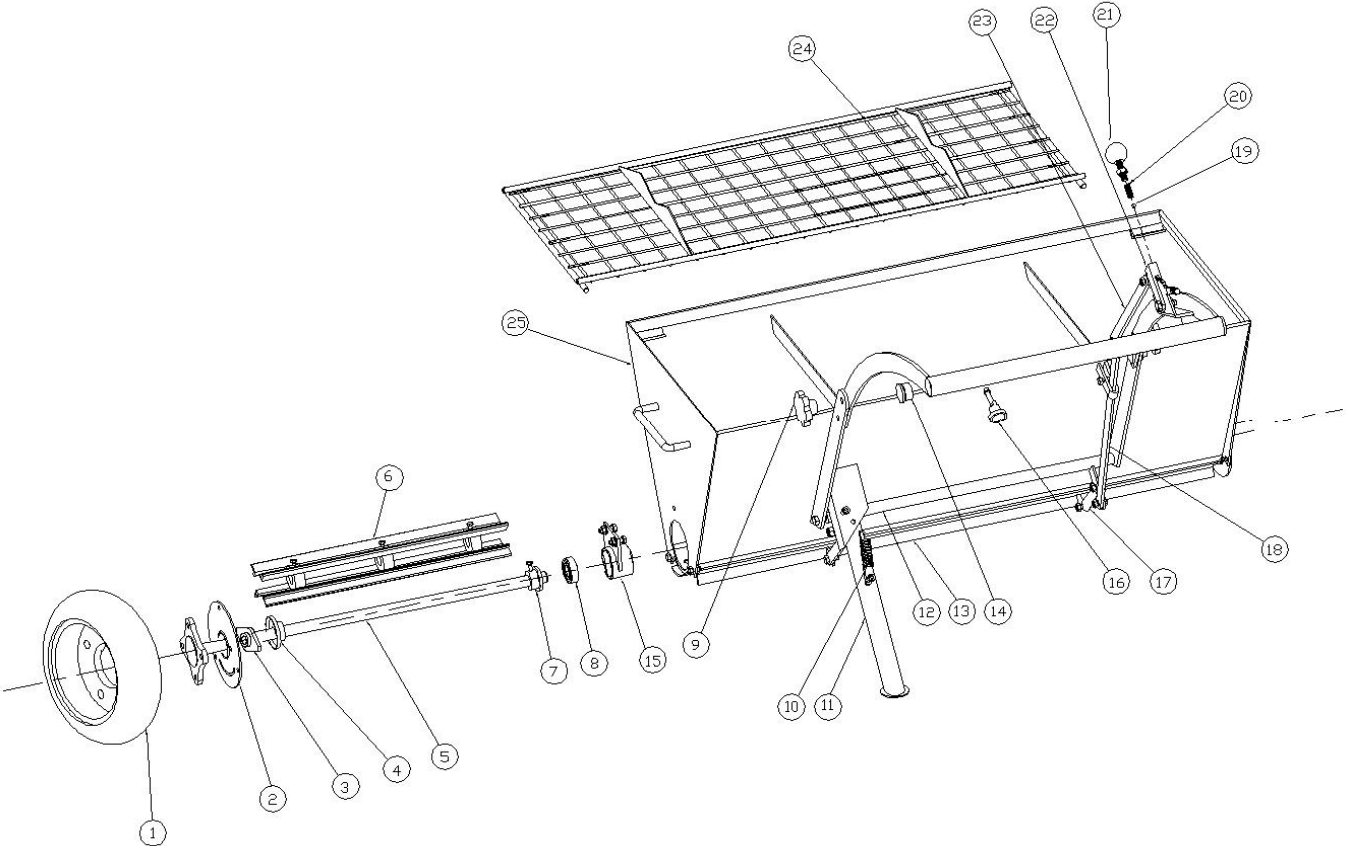


**Step 7:** Tighten knob to secure the handle in place

*THIS PAGE HAS BEEN INTENTIONALLY LEFT BLANK*

# ASSEMBLY DRAWING AND PARTS LIST

MS20 WALK BEHIND MATERIAL SPREADER OWNER'S MANUAL & PARTS BOOK



**MATERIAL SPREADER PARTS LIST**

<b><u>NO.</u></b>	<b><u>PART NO.</u></b>	<b><u>PART NAME</u></b>	<b><u>QTY.</u></b>
1	88001	WHEEL	2
2	88002	PLATE	2
3	88003	DIAMOND BEARING	2
4	88004	BEARING BLOCK	2
5	88005	WHEEL SHAFT	2
6	88006	AXLE	2
7	88007	BEARING BLOCK	2
8	88008	BEARING	2
9	88009	KNOB	2
10	88010	SPRING	1
11	88011	STAND	1
12	88012	CONNECTING ROD	1
13	88013	BAFFLE	1
14	88014	PLUG	2
15	88015	BEARING HOUSING	1
16	88016	LOCK PIN	1
17	88017	SHORT ROD	2
18	88018	LONG ROD	1
19	88019	BALL	1
20	88020	SPRING	1
21	88021	CONTROL KNOB	1
22	88022	ADJUSTER	1
23	88023	ROD	1
24	88024	NET	1
25	88025	HOPPER	1







**WWW.BARTELLGLOBAL.COM**



Bartell Morrison Inc.  
 375 Annagem Boulevard  
 Mississauga, Ontario, Canada  
 L5T 3A7  
 Tel: 905-364-4200  
 Toll Free: 866-501-1683  
 Fax: 905-364-4201



Bartell Morrison (USA) LLC  
 200 Commerce Drive, Unit A  
 Freehold, New Jersey, USA  
 07728  
 Tel: 732-566-5400  
 Toll Free: 888-999-1570  
 Fax: 732-566-5444



SPE International  
 Honeyholes Lane  
 Dunholme, Lincoln, UK  
 LN2 3SU  
 Tel: +44 (0)1673 860709  
 Fax: +44 (0)1673 861119



Innovatech  
 832 80th Street SW  
 Everett, Washington, USA  
 98203  
 Tel: 425-405-1881  
 Toll Free: 800-267-6682  
 Fax: 425-402-8547