



PARTS MANUAL

PREDATOR POLISHER/GRINDER

P-2400



**ORIGINAL
LANGUAGE**

Doc. # PB-B11026
Orig. Rel. - 02/2011
Curr. Rev. - 00
Rev. Date - 02/2011

PARTS BOOK

P-2400

TABLE OF CONTENTS

1. GRINDER FINAL ASSEMBLY	4
2. FRAME ASSEMBLY	6
3. WATER TANK ASSEMBLY	8
4. GRINDER HEAD ASSEMBLY	8
5. DRUM DRIVE UNIT ASSEMBLY	10
6. DRUM ASSEMBLY	12
7. DRUM HOUSING ASSEMBLY	14
8. BELT TENSIONER ASSEMBLY	14
9. BEARING ASSEMBLY	16
10. CUTTER HEAD ASSEMBLIES	16
11. CUTTER HEAD ASSEMBLY	18
12. DRIVE PULLEY ASSEMBLY	18
13. IDLER PULLEY ASSEMBLY	18
14. FLOATING HEAD ASSEMBLY	20
15. HOLDER ASSEMBLY	20
16. CONTROL BOX ASSEMBLY	20

PARTS LIST 1

P-2400

GRINDER FINAL ASSEMBLY

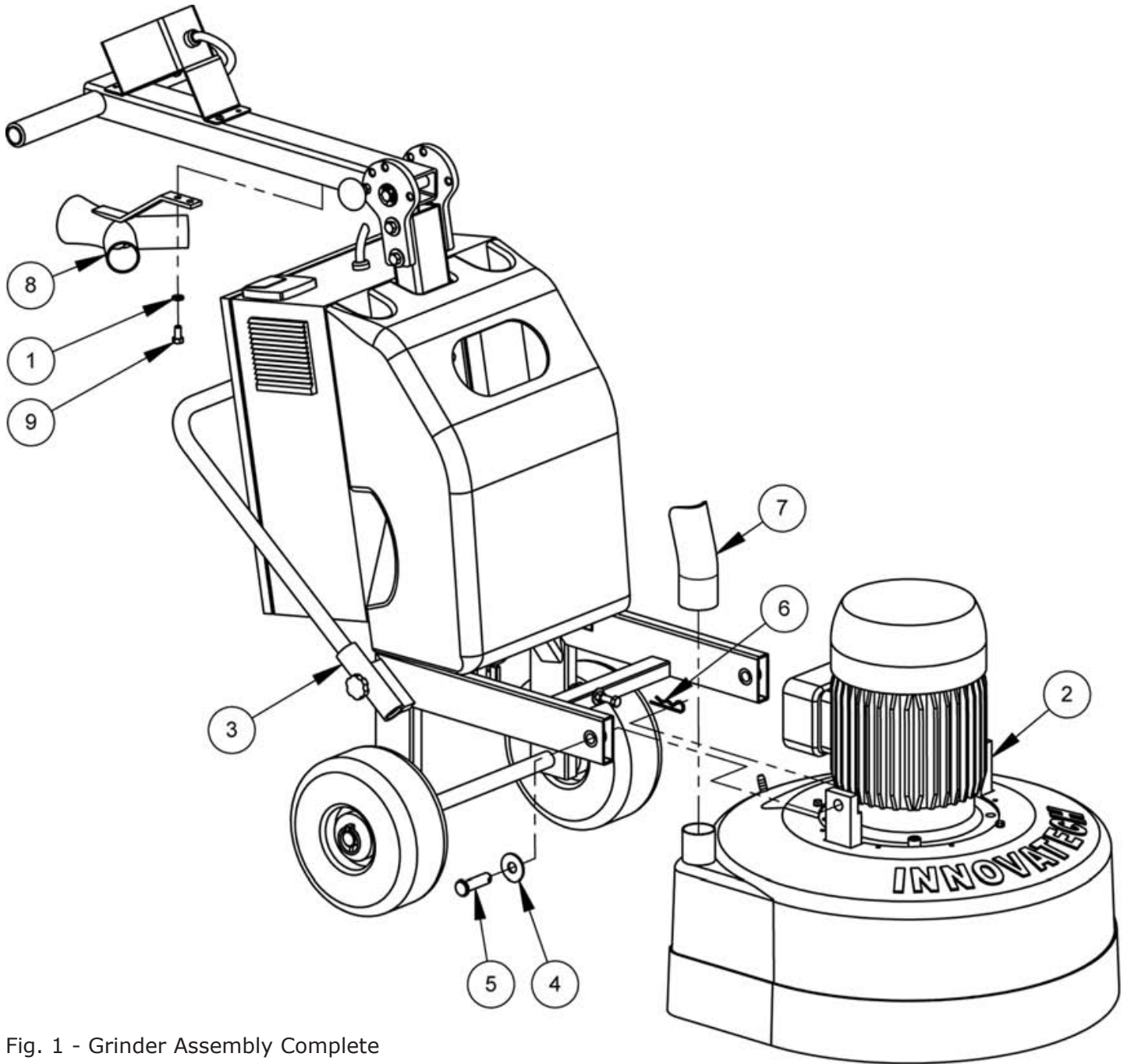


Fig. 1 - Grinder Assembly Complete

PARTS LIST 1

P-2400

GRINDER FINAL ASSEMBLY

Fig. 1 - Grinder Assembly Complete

ITEM NO.	PART NO.	DESCRIPTION	QTY.	REMARK
1	10902	WASHER, LOCK, 3/8	2	
2	85279	GRINDER HEAD ASSEMBLY	1	7.5HP VERSION
	85278	GRINDER HEAD ASSEMBLY	1	10HP VERSION
3	85281	FRAME ASSEMBLY COMPLETE	1	7.5HP VERSION
	85280	FRAME ASSEMBLY COMPLETE	1	10HP VERSION
4	10086	WASHER, FLAT, 5/8	2	
5	10087	CLEVIS PIN, 5/8 DIA X 2 1/2" LG	2	
6	10088	COTTER PIN	2	
7	85059	VACUUM HOSE, 2" ID X 51" LG	2	
8	85060	Y CONNECTOR	1	
9	30181	HHCS, 3/8-16 X 3/4" LG	2	

PARTS LIST 2

P-2400

FRAME ASSEMBLY

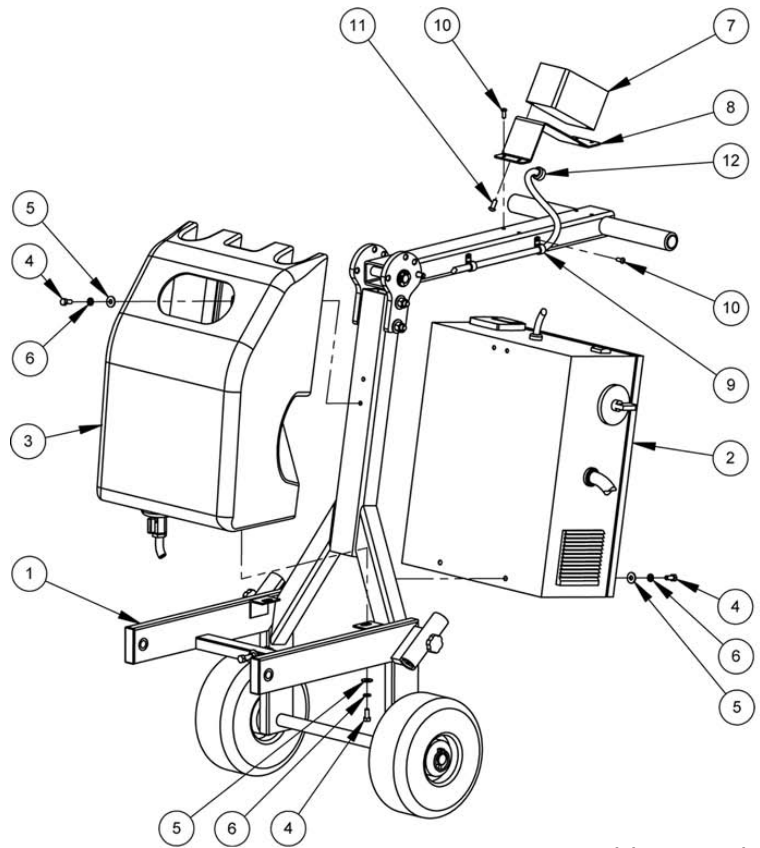
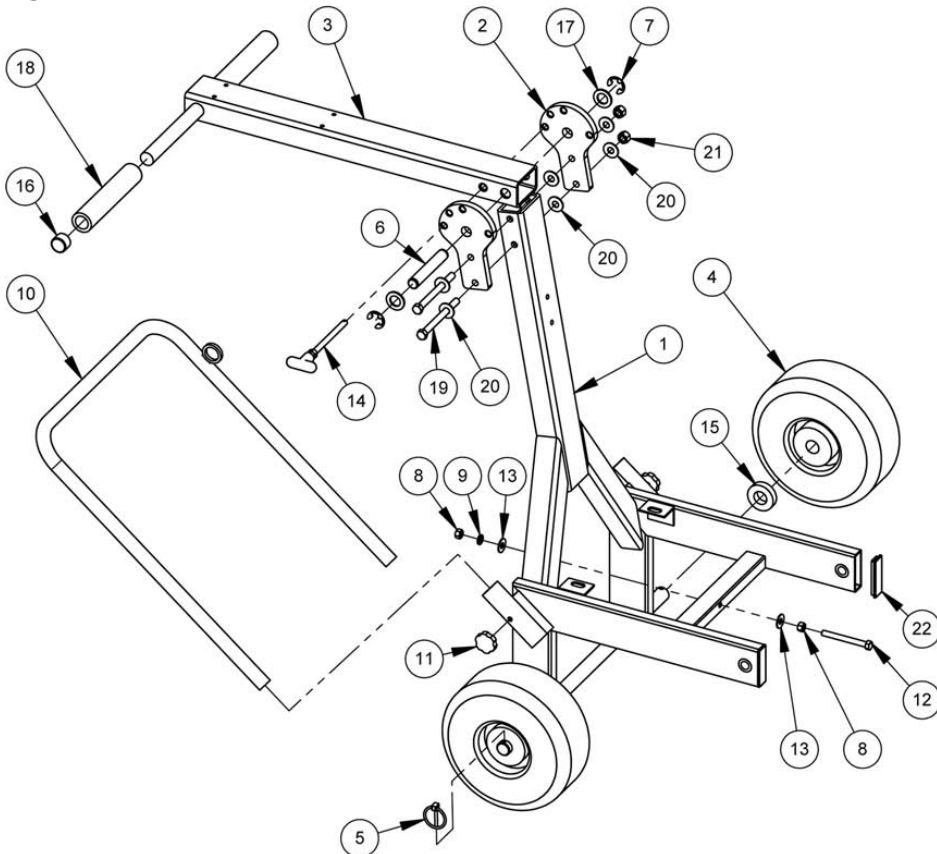


Fig. 2 - Frame Assembly Complete

Fig. 3 - Frame Structure



PARTS LIST 2

P-2400

FRAME ASSEMBLIES

Fig. 2 - Frame Assembly Complete

ITEM NO.	PART NO.	DESCRIPTION	QTY.	REMARK
1	85066	FRAME STRUCTURE	1	
2	85163	INVERTER BOX, 10HP	1	SEE FIGURE 19
	85158	INVERTER BOX, 7.5HP	1	SEE FIGURE 19
3	85062	WATER TANK ASSEMBLY	1	
4	30142	HHCS,5/16-18UNC x 3/4"LG	8	
5	11586	WASHER, FLAT, 5/16	8	
6	10402	WASHER, LOCK, 5/16	8	
7	85157	POWER CONTROL BOX	1	SEE FIGURE 19
8	85063	BRACKET	1	
9	85064	P-CLAMP, 1/2" CABLE	2	
10	10089	BHCS, 1/4-20UNC x 5/8" LG	6	
11	10090	BHCS, 5/16-18UNC x 3/4" LG	2	
12	85157	CABLE, INVERTER-CONTROL BOX	1	SEE FIGURE 19

Fig. 3 - Frame Structure

ITEM NO.	PART NO.	DESCRIPTION	QTY.	REMARK
1	85066	FRAME WELDMENT	1	
2	85067	TILT ANGLE SELECTION PLATE	2	
3	85068	HANDLE POST WELDMENT	1	
4	85069	WHEEL	2	
5	10091	LYNCH PIN	2	
6	85070	HANDLE PIN	1	
7	10092	RETAINING RING, 7/8 DIA.	2	
8	10355	HEX NUT, 3/8-16UNC	3	
9	10902	WASHER, LOCK, 3/8	1	
10	85071	INVERTER PROTECTION BAR	1	
11	10093	THUMB SCREW, 5/16-18UNC x 1/2"LG	2	
12	10094	HHCS,3/8-16UNC X 3 1/2"LG	1	
13	981120	WASHER, FLAT, 3/8	2	
14	85203	PIN, TILT LOCK	1	
15	85204	SPACER, 1" ID x 2" OD x 1/2" THK	2	
16	85072	END CAP, 1" DIA.	2	
17	30499	WASHER, FLAT, 3/4"	2	
18	85073	HANDLE GRIP	2	
19	10095	HHCS, 7/16-14UNC x 5" LG	2	
20	12930	WASHER, FLAT, 7/16	6	
21	10096	NUT, NYLOCK, 7/16-14UNC	2	
22	85074	END CAP, 1" x 3" RECT.	2	

PARTS LIST 3

P-2400

WATER TANK ASSEMBLY

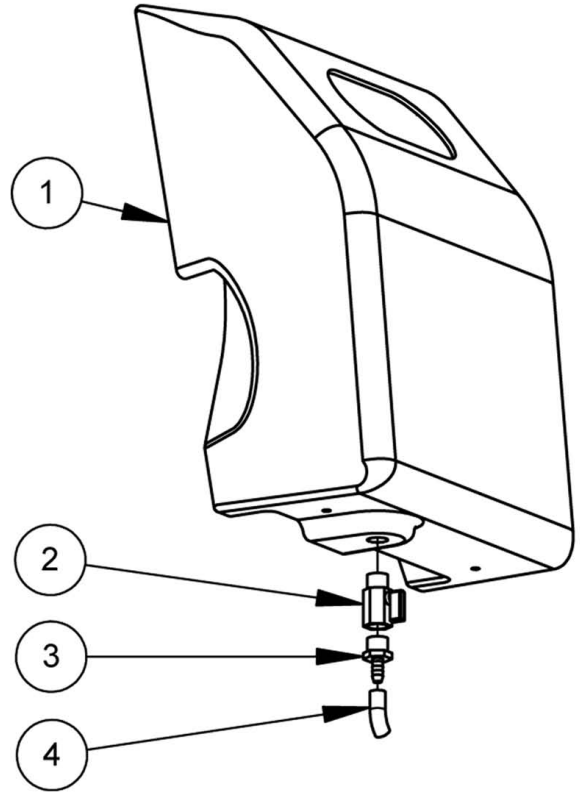
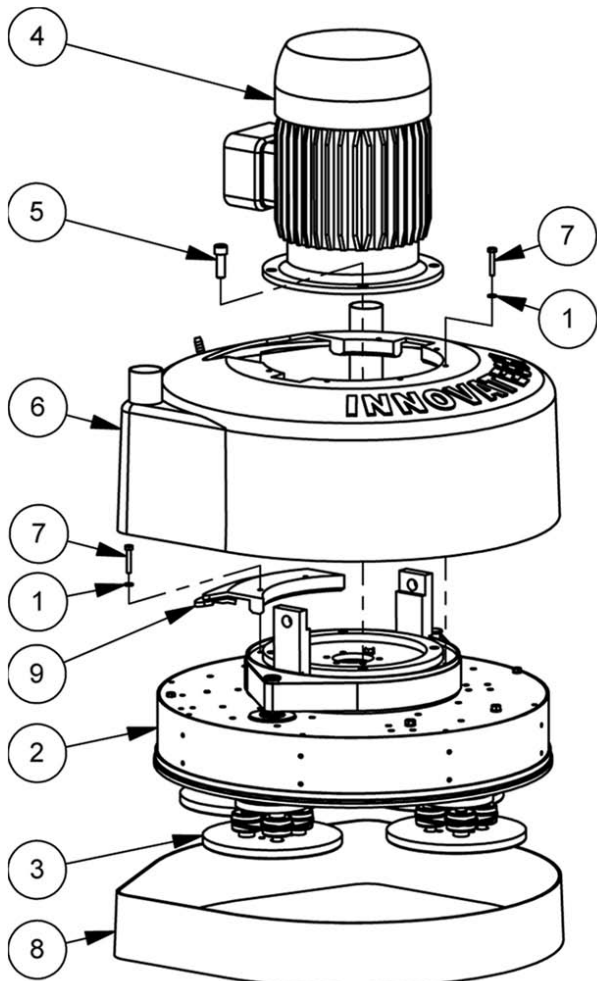


Fig. 4 - Water Tank Assembly

GRINDER HEAD ASSEMBLY

Fig. 5 - Grinder Head Assembly



PARTS LIST 3

P-2400

WATER TANK ASSEMBLY

Fig. 4 - Water Tank Assembly

ITEM NO.	PART NO.	DESCRIPTION	QTY.	REMARK
1	85075	WATER TANK	1	
2	85076	DRAIN VALVE	1	
3	85077	COUPLER, 1/2" NPT - 3/8" BARB	1	
4	85078	TUBING, 3/8" ID x 5/8" OD x 10" LG	1	

GRINDER HEAD ASSEMBLY

Fig. 5 - Grinder Head Assembly

ITEM NO.	PART NO.	DESCRIPTION	QTY.	REMARK
1	10521	WASHER, LOCK, 1/4"	8	
2	85282	DRUM, DRIVE UNIT, 10HP	1	
	85283	DRUM, DRIVE UNIT, 7.5HP	1	
3	85207	CUTTER HEAD, FLOATING ASSY	4	
4	85284	MOTOR, 10HP	1	
	85285	MOTOR, 7.5HP	1	
5	10097	SHCS, 1/2-13UNC x 1 1/2" LG	4	
6	960075	SHROUD ASSEMBLY	1	
7	10098	HHCS, 1/4-20UNC x 1 1/2" LG	8	
8	85080	SPLASH GUARD	1	
9	85081	SHROUD, CUT-OUT PANEL	1	

PARTS LIST 4

P-2400

DRUM DRIVE UNIT ASSEMBLY

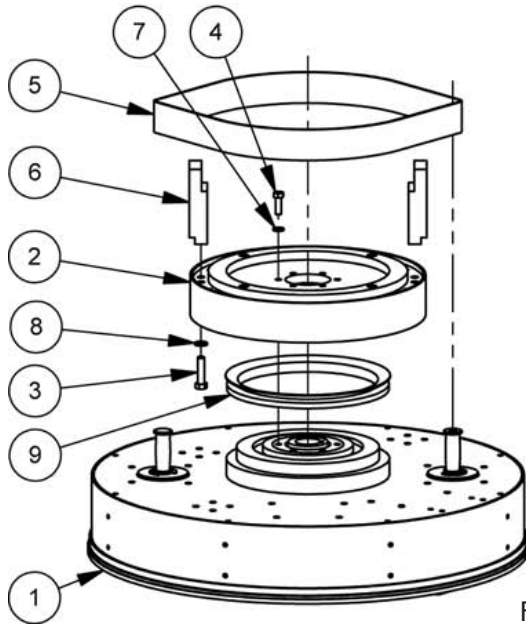
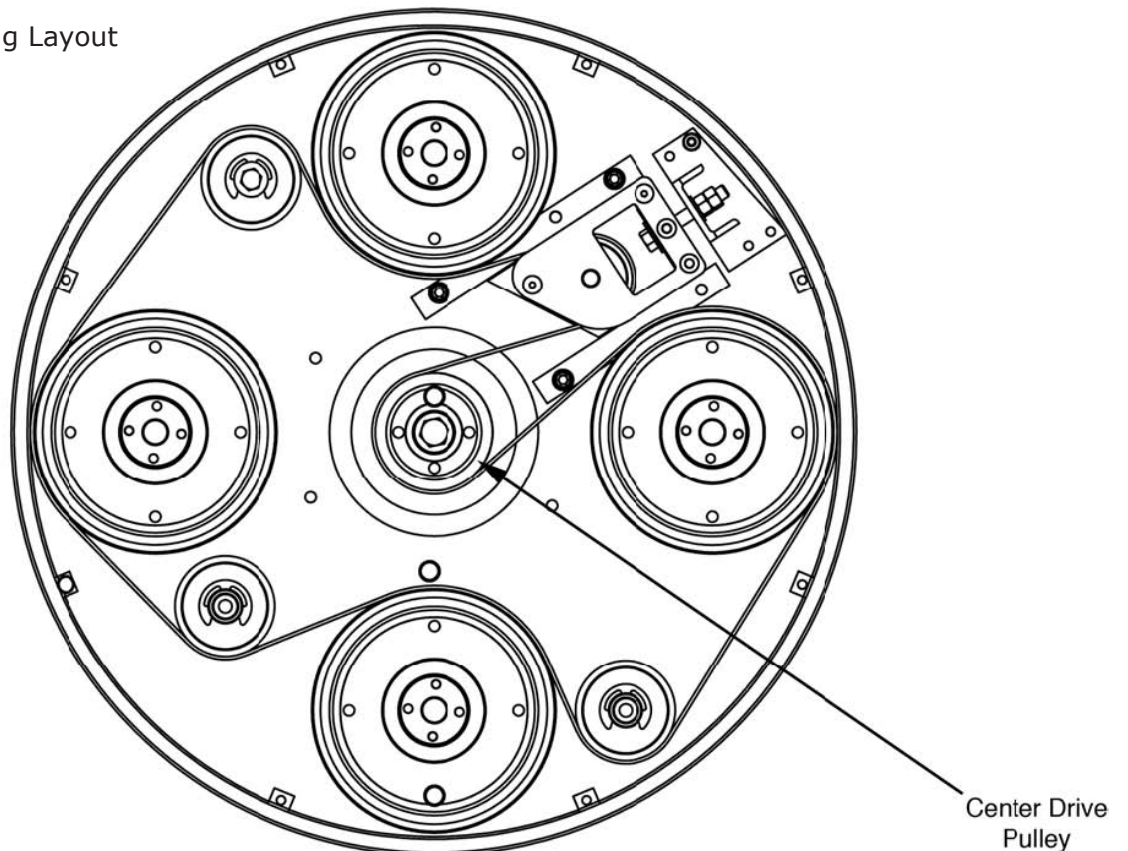


Fig. 6 - Drum Drive Unit Assembly

Fig. 7 - Drive Belt Routing Layout



ATTENTION: BELT'S GREY COLORED SIDE TO FACE TOWARD CENTER DRIVE PULLEY.

PARTS LIST 4

P-2400

DRUM DRIVE UNIT ASSEMBLY

Fig. 6 - Drum Drive Unit Assembly

ITEM NO.	PART NO.	DESCRIPTION	QTY.	REMARK
1	85286	DRUM ASSEMBLY, 10HP	1	
	85287	DRUM ASSEMBLY, 7.5HP	1	
2	85083	MOTOR BASE ASSEMBLY	1	
3	10099	HHCS, 3/8-16UNC x 1 1/2" LG	4	
4	10199	HHCS, 5/16-18UNC x 1" LG, GR 8	6	
5	85084	BELT, 1 3/4" W x 43 3/4" LG	1	
6	85085	POST	2	
7	10402	WASHER, LOCK, 5/16"	6	
8	10902	WASHER, LOCK, 3/8"	4	
9	10354	V-RING SEAL, 198mm ID x 25mm W	1	

PARTS LIST 5

P-2400

DRUM ASSEMBLY

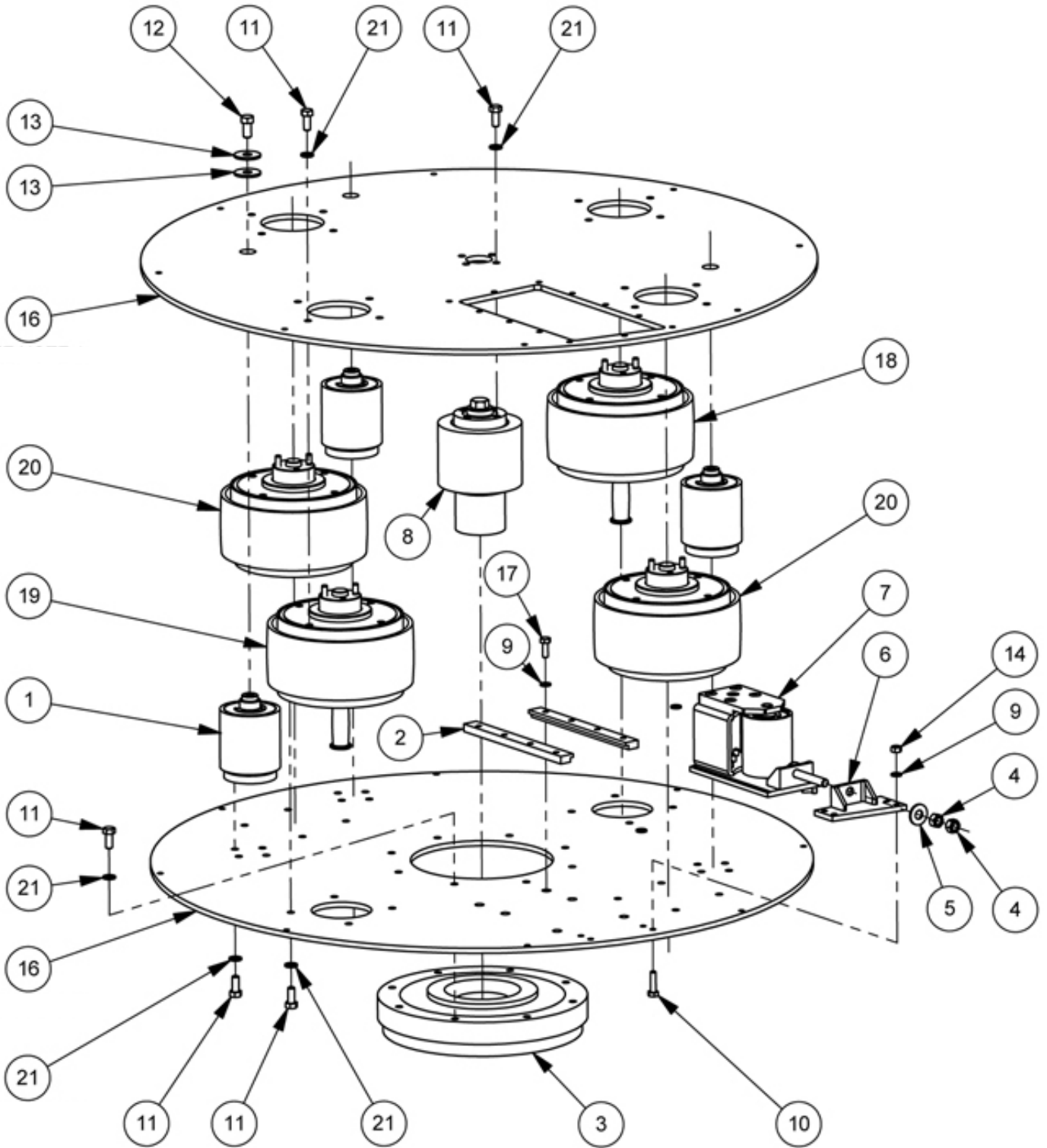


Fig. 9 - Drum Assembly

PARTS LIST 5

P-2400

DRUM ASSEMBLY

Fig. 8 - Drum Assembly

ITEM NO.	PART NO.	DESCRIPTION	QTY.	REMARK
1		DRUM TOP/BOTTOM PLATE, 10HP	1	SEE FIGURE 9
		DRUM TOP/BOTTOM PLATE, 7.5HP	1	SEE FIGURE 9
2	85086	TENSIONER TRACK, 2 HOLE	1	
3	85087	TENSIONER TRACK, 3 HOLE	1	
4	85088	TENSIONER SLIDING UNIT	1	
5	85089	TENSIONER STATIONARY ANCHOR	1	
6	85090	IDLER ASSEMBLY	3	
7	85091	BEARING ASSEMBLY	1	
8	85092	BELT - NOT SHOWN	1	
9	10905	WASHER, FLAT, 3/8	6	
10	12418	HEX NUT, 1/4-20UNC	4	
11	85093	PULLEY, CENTRE DRIVE	1	
12	85094	CUTTER HEAD PULLEY ASSEMBLY	2	
13	85095	CUTTER HEAD PULLEY ASSEMBLY (FLANGED)	1	
14	85096	CUTTER HEAD PULLEY ASSY (INSERT FLANGED)	1	
15	30181	HHCS, 3/8-16UNC x 3/4" LG	3	
16	10402	WASHER, LOCK, 5/16"	55	
17	10355	HEX NUT, 3/8-16UNC	2	
18	10356	HHCS, 5/16-18UNC x 3/4" LG, GR 8	50	
19	10357	SHCS, 5/16-18UNC x 1" LG	2	
20	50316	HHCS, 1/4-20UNC x 1" LG	4	
21	10521	WASHER, LOCK, 1/4"	4	
22	981120	WASHER, FLAT, 3/8	1	
23	11082	SHCS, 5/16-18UNC x 3/4" LG	3	10HP VERSION
	12727	SHCS, 5/16 - 18UNC x 1 1/2" LG	3	7.5HP VERSION
24	85292	TENSIONER ADAPTER PLATE	1	7.5HP VERSION

PARTS LIST 5

P-2400

DRUM HOUSING ASSEMBLY

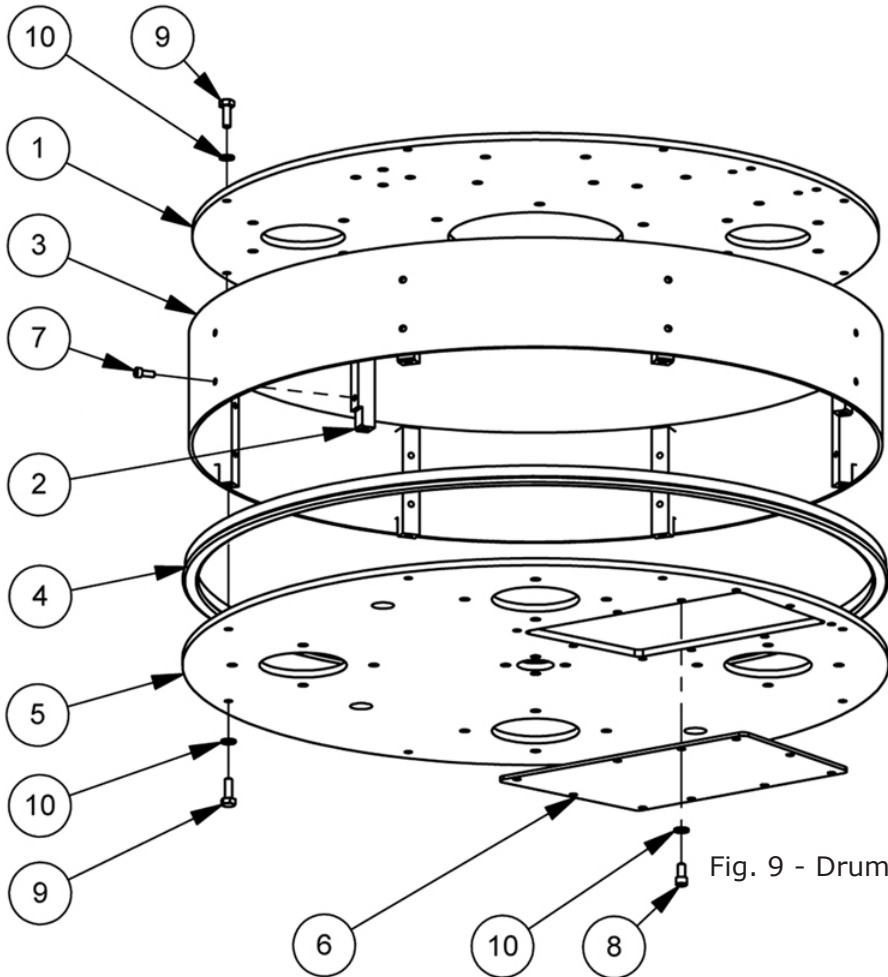


Fig. 9 - Drum Housing Assembly

BELT TENSIONER ASSEMBLY

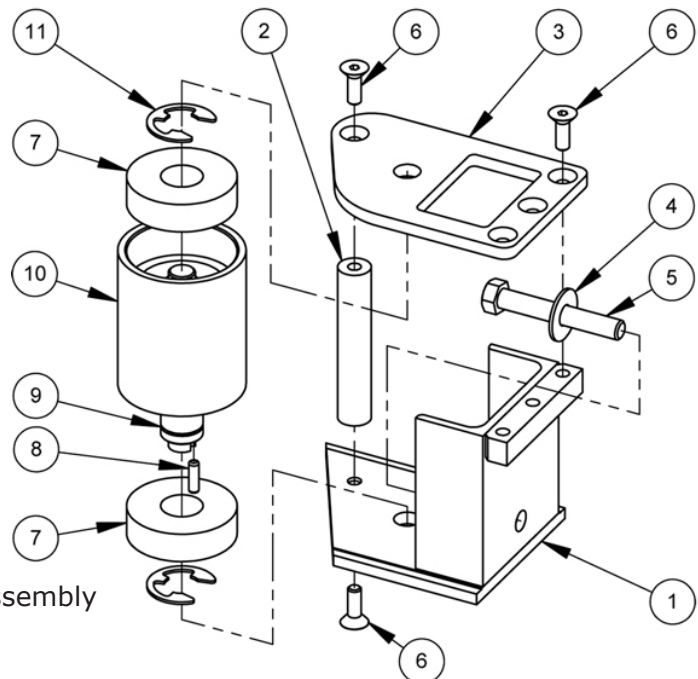


Fig. 10 - Belt Tensioner Assembly

PARTS LIST 6

P-2400

DRUM HOUSING ASSEMBLY

Fig. 9 - Drum Housing Assembly

ITEM NO.	PART NO.	DESCRIPTION	QTY.	REMARK
1	85097	DRUM TOP PLATE, 10HP	1	
	85289	DRUM TOP PLATE, 7.5HP	1	
2	85099	SPACER BAR	8	
3	85127	DRUM SIDE WALL	1	
4	85128	EDGE TRIM SEAL	1	
5	85098	DRUM BOTTOM PLATE, 10HP	1	
	85294	DRUM BOTTOM PLATE, 7.5HP	1	
6	85129	COVER PLATE	1	
7	10358	SHCS, #10-24UNC x 1/2" LG	16	
8	10359	SHCS, 1/4-20UNC x 1/2" LG	10	
9	10963	HHCS, 1/4-20UNC x 3/4" LG	16	
10	10521	WASHER, LOCK, 1/4	26	

BELT TENSIONER ASSEMBLY

Fig. 10 - Belt Tensioner Assembly

ITEM NO.	PART NO.	DESCRIPTION	QTY.	REMARK
1	85130	TENSIONER SLIDE BASE	1	
2	85131	SUPPORT POST, TENSIONER TOP PLATE	1	
3	85132	TENSIONER TOP PLATE	1	
4	981120	WASHER, FLAT, 3/8 SAE	1	
5	10360	HHCS, 3/8-16UNC x 2 1/2" LG, FULL THRD	1	
6	10361	FHSCS, 1/4-20UNC x 3/4" LG	5	
7	10362	BEARING, 20 ID x 52 OD x 15 W	2	
8	10363	DOWEL PIN, 3/16 DIA. x 5/8" LG	1	
9	85133	SHAFT	1	
10	85134	IDLER ROLLER	1	
11	10092	RETAINING RING, 7/8" SHAFT, E STYLE	2	

PARTS LIST 7

P-2400

BEARING ASSEMBLY

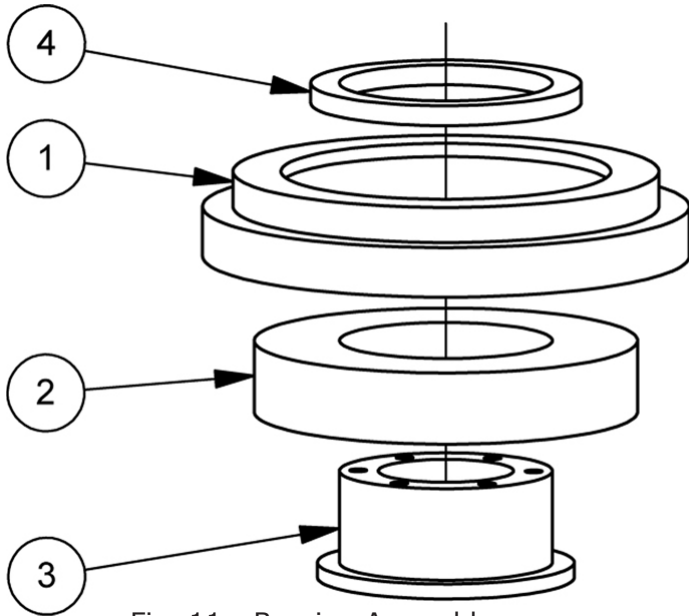


Fig. 11 - Bearing Assembly

CUTTER HEAD ASSEMBLIES

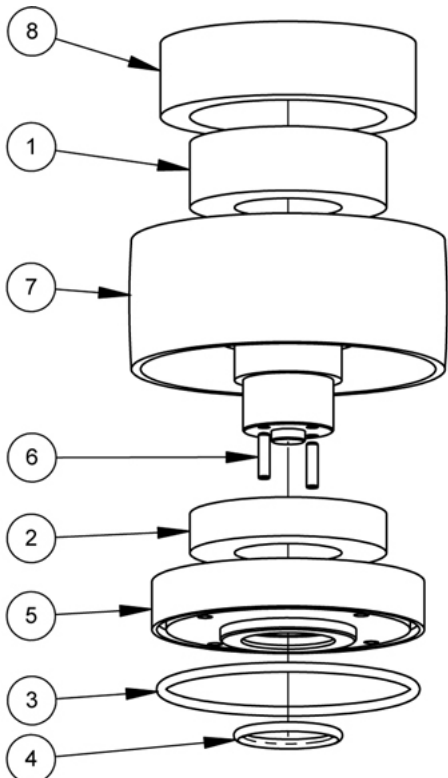


Fig. 12 - Cutter Head Pulley Assembly

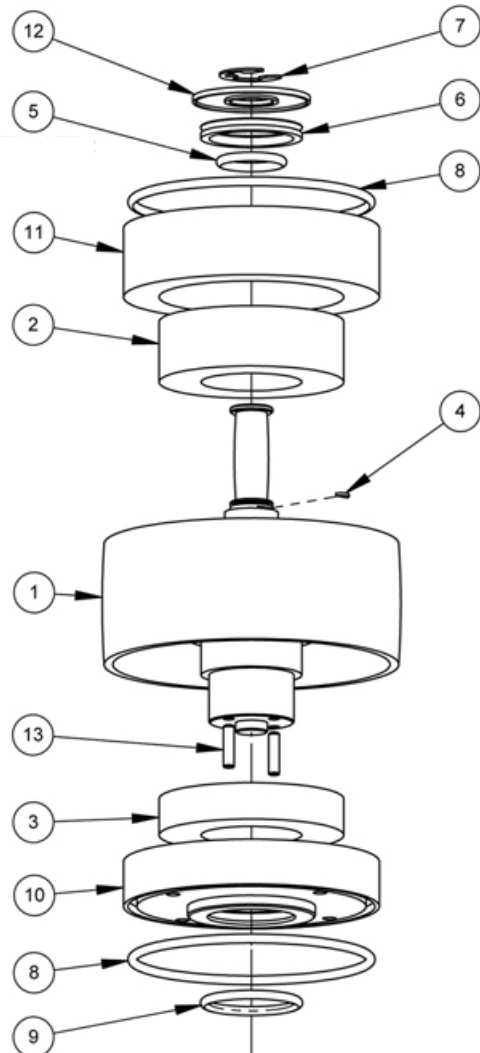


Fig. 13 - Flanged Cutter Head Pulley Assembly

PARTS LIST 7

P-2400

BEARING ASSEMBLY

Fig. 11 - Bearing Assembly

ITEM NO.	PART NO.	DESCRIPTION	QTY.	REMARK
1	85135	BEARING HOUSING, OUTER	1	
2	10364	BEARING, 100 ID x 180 OD x 34 W	1	
3	85136	BEARING HOUSING, INNER	1	
4	85137	SPACER RING	1	

CUTTER HEAD ASSEMBLIES

Fig. 12 - Cutter Head Assembly

ITEM NO.	PART NO.	DESCRIPTION	QTY.	REMARK
1	10365	BEARING, 60 ID x 110 OD x 36.5 W	1	
2	10366	BEARING, 60 ID x 110 OD x 22 W	1	
3	10377	O-RING, 5 3/8" ID x 5 3/4" OD x 3/16" W	1	
4	10378	O-RING, 2" ID x 2 3/8" OD x 3/16" W	1	
5	85138	BEARING HOUSING, BOTTOM	1	
6	10379	DOWEL PIN, 1/4" DIA. x 1" LG	2	
7	85139	CUTTER HEAD PULLEY, CAST	1	
8	85140	BEARING HOUSING, TOP	1	

Fig. 13 - Flanged Cutter Head Assembly

ITEM NO.	PART NO.	DESCRIPTION	QTY.	REMARK
1	85141	FLANGED CUTTER HEAD PULLEY	1	
2	10366	BEARING, 60 ID x 110 OD x 36.5 W	1	
3	10365	BEARING, 60 ID x 110 OD x 22 W	1	
4	10380	KEY, WOODRUFF, 3/8" DIA x 1/16" THK	1	
5	10367	O-RING, 1 1/4" ID x 1 5/8" OD x 3/16" W	1	
6	10368	V-RING SEAL, 45 ID x 9 W	1	
7	10369	RETAINING RING, 1" SHAFT, E STYLE	1	
8	10377	O-RING, 5 3/8" ID x 5 3/4" OD x 3/16" W	2	
9	10378	O-RING, 2" ID x 2 3/8" OD x 3/16" W	1	
10	85138	BEARING HOUSING, BOTTOM	1	
11	85142	BEARING HOUSING, TOP	1	
12	85143	DUST SEAL, 2 3/4" DIA.	1	
13	10379	DOWEL PIN, 1/4" DIA. x 1" LG	2	

PARTS LIST 8

P-2400

CUTTER HEAD ASSEMBLY

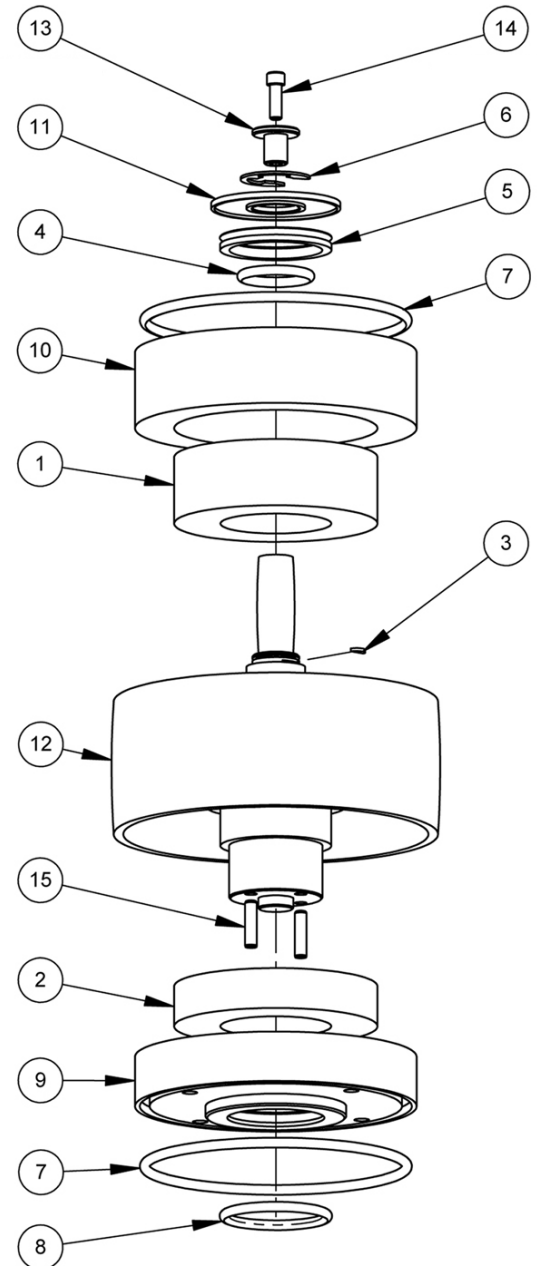


Fig. 14 - Cutter Head Assembly

DRIVE PULLEY ASSEMBLY

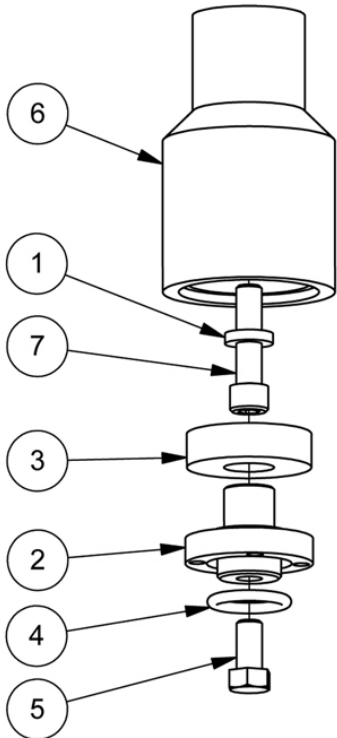


Fig. 15 - Drive Pulley Assembly

IDLER PULLEY ASSEMBLY

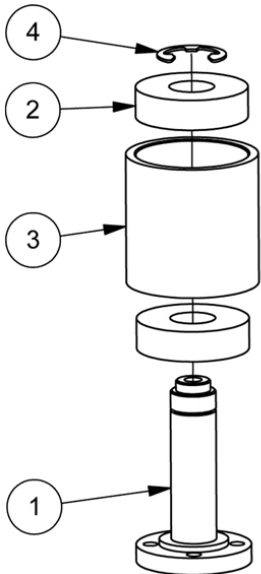


Fig. 16 - Idler Pulley Assembly

PARTS LIST 8

P-2400

CUTTER HEAD ASSEMBLIES

Fig. 14 - Inserted Cutter Head Assembly

ITEM NO.	PART NO.	DESCRIPTION	QTY.	REMARK
1	10366	BEARING, 60 ID x 110 OD x 36.5 W	1	
2	10365	BEARING, 60 ID x 110 OD x 22 W	1	
3	10380	KEY, WOODRUFF, 3/8" DIA x 1/16" THK	1	
4	10367	O-RING, 1 1/4" ID x 1 5/8" OD x 3/16" W	1	
5	10368	V-RING SEAL, 45 ID x 9 W	1	
6	10369	RETAINING RING, 1" SHAFT, E STYLE	1	
7	10377	O-RING, 5 3/8" ID x 5 3/4" OD x 3/16" W	2	
8	10378	O-RING, 2" ID x 2 3/8" OD x 3/16" W	1	
9	85138	BEARING HOUSING, BOTTOM	1	
10	85142	BEARING HOUSING, TOP	1	
11	85143	DUST SEAL, 2 3/4" DIA.	1	
12	85144	CUTTER HEAD PULLEY, INSERT TYPE	1	
13	85145	FLANGE INSERT	1	
14	10213	SHCS, 1/4-20UNC x 3/4" LG	1	
15	10379	DOWEL PIN, 1/4" DIA. x 1" LG	2	

DRIVE PULLEY ASSEMBLY

Fig. 15 - Drive Pulley Assembly

ITEM NO.	PART NO.	DESCRIPTION	QTY.	REMARK
1	85206	SPACER, 1/2" ID x 15/16" OD x 3/16" THK	1	
2	85146	SHAFT	1	
3	10370	BEARING, 25 ID x 62 OD x 17 W	1	
4	10367	O-RING, 1 1/4" ID x 1 5/8" OD x 3/16" W	1	
5	10371	HHCS, 1/2-13UNC x 1" LG	1	
6	85147	PULLEY	1	
7	10372	SHCS, 1/2-13UNC x 2" LG	1	

DRIVE PULLEY ASSEMBLY

Fig. 16 - Idler Pulley Assembly

ITEM NO.	PART NO.	DESCRIPTION	QTY.	REMARK
1	85148	SHAFT	1	
2	10370	BEARING, 25 ID x 62 OD x 17 W	2	
3	85149	IDLER ROLLER	1	
4	10369	RETAINING RING, 1" SHAFT, E STYLE	1	

PARTS LIST 9

P-2400

FLOATING HEAD ASSEMBLY

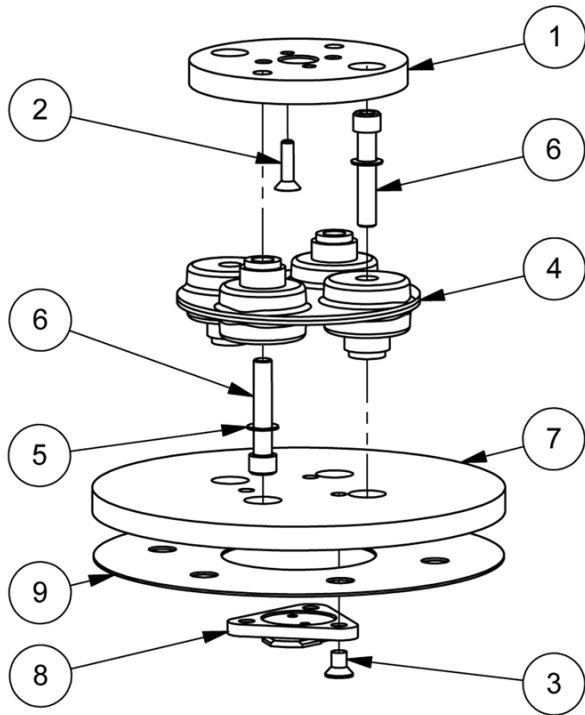


Fig. 17 - Floating Head Assembly

HOLDER ASSEMBLY

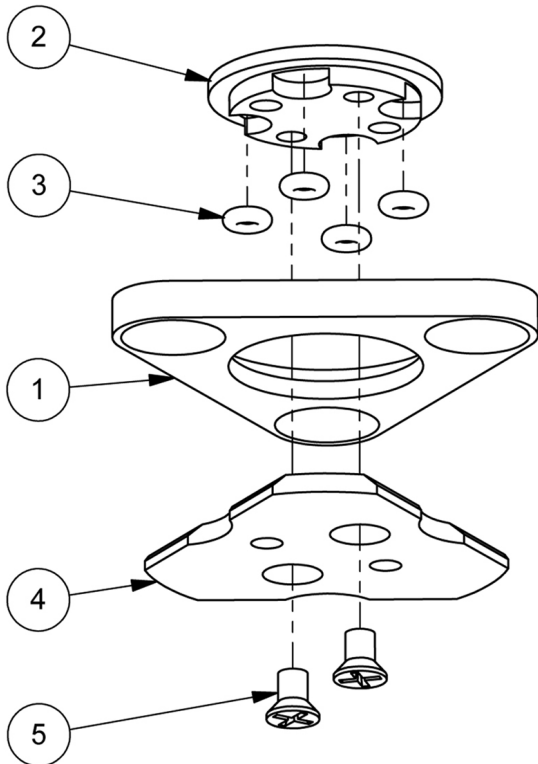


Fig. 18 - Holder Assembly

CONTROL BOX ASSEMBLY

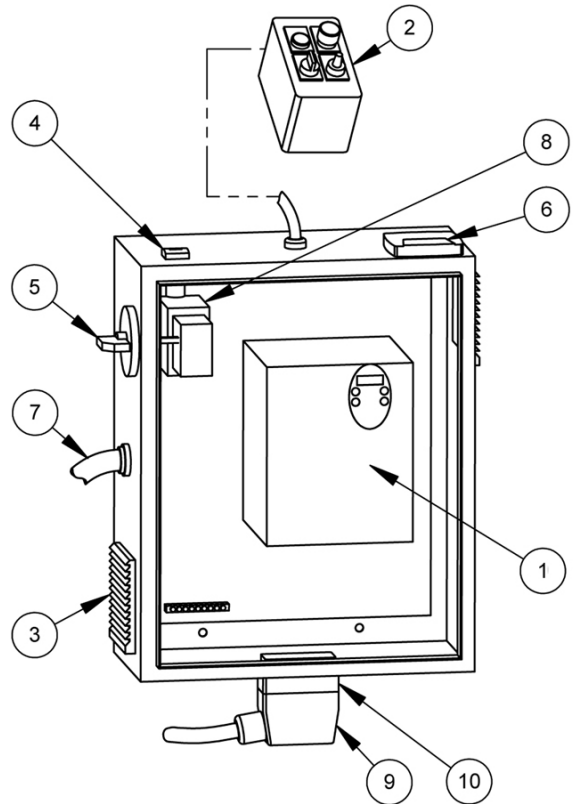


Fig. 19 - Control Box Assembly

PARTS LIST 9

P-2400

FLOATING HEAD ASSEMBLY

Fig. 17 - Floating Head Assembly

ITEM NO.	PART NO.	DESCRIPTION	QTY.	REMARK
1	85150	TOP PLATE, FLOATING HEAD	1	
2	10373	FHSCS, 1/4-20UNC x 1" LG	2	
3	10374	FHPS, 5/16-18UNC x 1/2" LG	3	
4	85151	FLEXIBLE COUPLING	1	
5	10375	WASHER, BELLEVILLE, SERRATED	4	
6	10371	SHCS, 3/8-24UNF x 2" LG	4	
7	85082	BOTTOM PLATE, FLOATING HEAD	1	
8	85152	CUTTER HOLDER ASSY	1	
9	85153	VELCRO MAT, CUTTER HEAD	1	

HOLDER ASSEMBLY

Fig. 18 - Holder Assembly

ITEM NO.	PART NO.	DESCRIPTION	QTY.	REMARK
1	85154	HOLDER BASE	1	
2	85155	HOLDER CENTER HUB	1	
3	10376	O-RING, 1/8" ID x 5/16" OD x 3/32" W	4	
4	85156	HOLD DOWN PLATE	1	
5	10381	FHPS, #10-24UNC x 5/16" LG	2	

CONTROL BOX ASSEMBLY

Fig. 19 - Control Box Assembly

ITEM NO.	PART NO.	DESCRIPTION	QTY.	REMARK
1	85295	INVERTER, 10 HP	1	
2	85296	INVERTER, 7.5 HP	1	
3	85157	POWER CONTROL BOX	1	
4	85291	VENT COVER	2	
5	85160	SWITCH, ON/OFF	1	
6	85161	AMMETER	1	
7	85297	CABLE (POWER IN), 10 HP	1	
	85298	CABLE (POWER IN), 7.5 HP	1	
8	85299	CIRCUIT BREAKER, 10 HP	1	
	85300	CIRCUIT BREAKER, 7.5 HP	1	
9	85290	CABLE (TO MOTOR)	1	
10	85162	CONNECTOR PLUG	1	



BARTELL MORRISON INC.

375 Annagem Blvd.
Mississauga, Ontario, Canada
L5T3A7

Toll Free: 866-501-1683

Local: 905-364-4200

Fax: 905-364-4202

www.bartellmorrison.com

BARTELL MORRISON (USA) LLC.

12 Industrial Drive.
Keyport, New Jersey, USA
07735

Toll Free: 888-999-1570

Local: 732-566-5400

Fax: 732-566-5444

www.bmiamerica.com

