

FLOOR STRIPPER

BULL



www.BartellGlobal.com

CANADA

170 Traders Blvd E
Mississauga, Ontario L4Z 1W7
TEL (647) 953-4100 FAX (647) 953-4101

KENTUCKY

4701 Allmond Ave
Louisville, Kentucky 40209
TEL (425) 405-9100 FAX (425) 405-9101

UK

Honeyholes Lane
Dunholme, Lincoln, UK LN2 3SU
TEL 01673 860709 FAX 01673 861119

NEW JERSEY

200 Commerce Drive, Unit A
Freehold, New Jersey 07728
TEL (848) 225-8100 FAX (848) 225-8101

**ORIGINAL LANGUAGE OPERATING MANUAL FOR
BARTELL RIDE-ON TROWELS**

© 2024 Bartell Global Inc.

No part of this work may be reproduced or transmitted in any form or by any means, electronic or mechanical, including photocopying and recording, or by any information storage or retrieval system without the prior written permission of Bartell Morrison Inc. unless such copying is permitted by federal copyright laws.

ADDRESS INQUIRIES OR REFERENCE PERMISSIONS CARE OF:

Bartell Global, 170 Traders Blvd E., Mississauga, Ontario, Canada, L4Z 1W7

| REV. | DATE | DESCRIPTION | APPROVED BY: |
|-------------|-------------|----------------------|---------------------|
| 00 | 11/2018 | Initial Release | AN |
| 01 | 04/2020 | Updated Part Numbers | AN |
| 02 | 09/2021 | Updated Part Numbers | AN |
| 03 | 03/2024 | Updated parts list 8 | AN |
| | | | |
| | | | |
| | | | |
| | | | |
| | | | |
| | | | |
| | | | |
| | | | |





| SAFETY PRECAUTIONS | |
|--|---|
|  | <p>DANGER EXPLOSION HAZARD</p> <p>Never operate the machine in an explosive atmosphere, near combustible materials, or where ventilation does not clear exhaust fumes.</p> |
|  | <p>CAUTION ROTATING HAZARD</p> <p>Never place hands or feet inside safety guard rings. Serious injury will result from contact with rotating tooling.</p> |
|  | <p>CAUTION MOVING PARTS</p> <p>Before starting the machine, ensure that all guards and safety devices are in place and functioning properly.</p> |
|  | <p>ATTENTION READ OWNER'S MANUAL</p> <p>Read and understand owner's manual before using this machine. Failure to follow operating instructions could result in serious injury or death.</p> |

TABLE OF CONTENTS

| | |
|---|-----------|
| <u>QUALITY ASSURANCE/ MACHINE BREAK IN</u> | 5 |
| <u>WARRANTY INFORMATION</u> | 5 |
| <u>SPECIFICATIONS</u> | 6 |
| <u>PREVENTATIVE MAINTENANCE AND ROUTINE SERVICE PLAN</u> | 7 |
| ROUTINE SERVICE SCHEDULE | 8 |
| ROUTINE SERVICE INTERVALS | 8 |
| <u>OPERATING SAFETY PRECAUTIONS</u> | 9 |
| <u>OPERATION INSTRUCTIONS</u> | 10 |
| SETTING UP YOUR BULL FLOOR STRIPPER | 10 |
| PRIOR TO OPERATION | 10 |
| CHANGING OR INSTALLING TOOLING | 10 |
| ADJUSTING THE WEIGHTS | 11 |
| OPERATION | 12 |
| <u>PARTS LIST 1 – BULL</u> | 13 |
| BULL FRAME – PARTS LIST 1 | 14 |
| <u>PARTS LIST 2 – BULL</u> | 15 |
| BULL TOOLS – PARTS LIST 2 | 15 |
| <u>PARTS LIST 3 – BULL</u> | 16 |
| BULL CONNECTING ROD – PARTS LIST 3 | 16 |
| <u>PARTS LIST 4 – BULL</u> | 17 |
| BULL CONNECTION BRACKET – PARTS LIST 4 | 18 |
| <u>PARTS LIST 5 – BULL</u> | 19 |
| BULL REAR WHEELS – PARTS LIST 5 | 19 |
| <u>PARTS LIST 6 – BULL</u> | 21 |
| BULL DRIVE UNIT – PARTS LIST 6 | 22 |
| <u>PARTS LIST 7 – BULL</u> | 23 |
| BULL HANDLE – PARTS LIST 7 | 24 |
| <u>PARTS LIST 8 – BULL</u> | 25 |
| BULL MOTOR PROTECTION – PARTS LIST 8 | 26 |

| | |
|---|------------------|
| <u>PARTS LIST 9 - BULL</u> | <u>27</u> |
| BULL DRIVE ADJUSTMENT LEVER - PARTS LIST 9 | 27 |
| <u>PARTS LIST 10 - BULL</u> | <u>29</u> |
| BULL BEARING HOUSING - PARTS LIST 10 | 30 |
| <u>PARTS LIST 11 - BULL</u> | <u>31</u> |
| BULL MOTOR PROTECTION - PARTS LIST 11 | 32 |
| <u>DECLARATION OF CONFORMITY</u> | <u>34</u> |

QUALITY ASSURANCE/ MACHINE BREAK IN

The Contec Floor Stripper is the product of extensive engineering development designed to give long life and unmatched performance. The Floor Strippers are shipped completely assembled.

You can help ensure that your Floor Stripper will perform at top levels by observing a simple routing on first use. Consider that your new Floor Stripper is like a new car. Just as you would break in a new car to the road or any new machine to the job, you should start gradually and build up to full use. Learn what your machine can do and how it will respond. Full throttle and control may be used after this time period, as allowed by material. This will serve to further break in the machine on your specific application, as well as provide you with additional practice using the machine.

We thank you for the confidence you have placed in us by purchasing a Contec Floor Stripper and wish you many years of satisfied use.

WARRANTY INFORMATION

Bartell agrees to furnish without charge, F.O.B. our plant, a replacement for any part or portion thereof, comprising the main unit of the Contec Floor Stripper, consisting of the handle, housing assembly, save and except tooling, and power units, prove upon our examination, to be defective in either material or workmanship within a period of twelve (12) months from date of purchase, provided that notice of such defective part or portion thereof is given to Bartell Ltd. within the twelve month warranty period. No further or other guarantee or warranty expressed or implied in connection with the sale of the Floor Stripper is given and our sole liability consists in replacing defective parts or portions thereof. We shall not be responsible for any special, indirect or consequential damages arising in any manner whatsoever.

This guarantee is for the sole benefit of the original purchaser as end user. Our responsibility under this guarantee ends in the case the original purchaser transfers ownership of the Floor Stripper, makes any changes or adds any parts or devices not of our manufacture to the Floor Stripper machine.

SPECIFICATIONS

| BULL | |
|----------------------------------|---------------------|
| Dimensions | |
| Working Width, mm (in) | 450 (17.7) |
| Overall Width, mm (in) | 500 (19.6) |
| Overall Length, mm (in) | 810 (31.9) |
| Overall Height, mm (in) | 1040-1130 (41-44.5) |
| Weight | |
| Weight, kg (lb) | 245 (539) |
| Removable Weight, kg (lb) | 107 (236) |
| Inboard weight | 2x 18 (40) |
| Outboard Weight | 2x 30 (66) |
| Handle Weight | 11 (24) |
| Power Source | |
| Power kw (HP) | 1.5 (2) |
| Volts (V) | 110 |
| Frequency (Hz) | 60 |
| Amperage (A) | 16.4 |

ROUTINE SERVICE SCHEDULE

| Routine Service Intervals | | Each Use | After 1.5 months or 50 hrs | Each 3 months or 100 hrs | Each 6 months or 200 hrs | Each 9 months or 300 hrs | Each 12 months or 400 hrs |
|---------------------------|------------------|----------|----------------------------|--------------------------|--------------------------|--------------------------|---------------------------|
| General Inspection | | | | | | | |
| Guards | Check | | ○ | ○ | ○ | ○ | ○ |
| Warning Stickers | Check | | ○ | ○ | ○ | ○ | ○ |
| Test Run | Check Operation | | ○ | ○ | ○ | ○ | ○ |
| Fasteners | Check Tightness | ○ | | | | | |
| Electrical | | | | | | | |
| Cord | Check for Damage | ○ | | | | | |
| Plug | Check for Damage | ○ | | | | | |
| Switches/Buttons | Check | ○ | | | | | |
| Components | | | | | | | |
| Tooling | Check Life | ○ | | | | | |
| Tooling Holder | Check for Damage | ○ | | | | | |
| Motor | | | | | | | |
| Fan | Check - Clean | | ○ | ○ | ○ | ○ | ○ |

ROUTINE SERVICE INTERVALS

Due to the nature and environment of use, Floor Strippers could be exposed to severe operating conditions. Some general maintenance guidelines will extend the useful life of your machine.

- The initial service for your floor stripper should be performed after 25 hours of use, at which time your mechanic (or authorized repair shop) should complete all the recommended checks in the schedule above. The maintenance log is handy for keeping a record of the maintenance performed and the parts used for servicing your grinder.
- Regular service according to the schedule above will prolong the life of the floor stripper and prevent expensive repairs.
- Keeping your floor stripper clean and free from debris is the single most important regular maintenance operation, over and above the checks in the service schedule above, that can be performed. After each use your floor stripper should be cleaned to remove any dust and debris from the undercarriage and surrounding components.
- In the Service Schedule above, items that should be checked, replaced or adjusted are indicated by “o” in the appropriate column. For ease of recording place, a checkmark through the “o” when the item is complete. If an item is not required or not completed place an “x” through the “o” in the box.
- Failure to have your floor stripper regularly serviced and properly maintained in accordance with the manufacturer’s instructions will lead to premature failure and void the warranty.

OPERATING SAFETY PRECAUTIONS

The BULL floor strippers are constructed according to existing safety rules and regulations. These technical precautions should not be removed or changed under any circumstances. While operating the machines the following points should also be kept in mind:

IMPORTANT: NEVER attempt to disable or circumvent these safety devices. They are present for the operator's protection and any tampering will result in substantial risk to the operator and all present at the job site. If your compactor's safety devices have been tampered with, do not use the equipment. Immediately contact your sales representative to obtain replacement parts or return the compactor to your dealer for repairs.

The instructions provided in this manual are done so to ensure the operator's safety as well as that of others, the equipment, and the job site. Failure to follow these guidelines can lead to serious personal injury and even death. The operator and any service personnel should read and understand the entire manual before working with or servicing any Contec Floor Stripper.

- The floor stripper BULL should always be operated with all safety covers and technical precautions.
- During transport, cleaning, repair or maintenance the floor stripper must be disconnected from the power supply. This also applies to the changing of tools.
- Always remove the tool before transporting the machine.
- Only use tools delivered by CONTEC®.
- The operator should never leave the machine unattended during operation.
- Before leaving the machine, all rotary parts should be brought to a standstill. The floor stripper must be disconnected from the power supply. Make sure that the machine cannot roll or move by itself.
- The BULL should be switched off immediately if unusual noises or vibrations are detected during the operating of the machinery. A thorough check must be carried out in order to detect the cause.
- After any maintenance and adjustment all safety covers must be reattached.
- Ear protectors must be worn.
- Eye protectors must be worn.
- Safety shoes with steel caps must be worn.
- In the event of a large amount of dust during operation, connect a dust collector to the grinder.
- Depending on the type of floor (floor coating) stripping can produce gases/dust. The operator must be held responsible if these generated gases/dusts are dangerous and if protection is necessary. Stripping floors containing asbestos is especially dangerous and can cause health problems. Special masks must be worn which keep the breathing air clean. A dust collector must be used and should be equipped with filters suitable for asbestos dust.

The floor must be swept before stripping. Anchor screws and bolts coming out of the floor can be better seen if the floor is clean. If the stripping tool strikes an anchor screw or bolt, then serious damage can be caused to the machine or grinding head.

OPERATION INSTRUCTIONS

SETTING UP YOUR BULL FLOOR STRIPPER

Your BULL Floor Stripper comes fully assembled with handle and motor fully installed. The handle is in the lowest position to allow for easier transportation. The handle can be adjusted to suit the operator by loosening the 2 screws at the base of the handle and retightening to set position. Tooling can now be installed, and your Floor stripper is ready for use.

PRIOR TO OPERATION

- Make sure that all dust, debris etc., are thoroughly removed from the unit prior to operation. Special effort should be given to the bottom of the machine where the tooling is located, as well as the drive wheels and motor.
- Check all bolts and screws for tightness and make sure all bolts and screws are securely tightened. Loose bolts and screws may cause damage to the unit. Make sure tooling is properly installed.

CHANGING OR INSTALLING TOOLING

- Lock the centre weights into position 1 (See below “Adjusting the Weights”)
- Tip the machine until it rests in a stable position
- Clean and loosen the bolts of the blade mounting
- Replace the blade.
- Make sure that the blade fits exactly into the support. On normal and hard subfloors, the bevel of the blade should show upwards (B). On soft subfloors the bevel should show downwards (A).

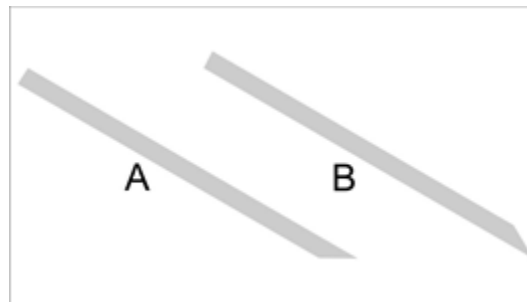


Figure 1: Blade orientation

- Tighten the bolts of the blade mounting again

ATTENTION: Before working on the floor stripper bring the motor to a total stand still and disconnect from the power supply.

CAUTION: Tooling is sharp, set wrench in position opposite to blade to avoid injury

ADJUSTING THE WEIGHTS

The two centre weights can be locked in three different positions. The locking bolt is situated on the right-hand side outside the weight. The bolt must be pulled out before changing the position.

Pos. 1: the weight is mostly on the rear traction wheels. The wheels will have increased traction and drive is increased.

Pos. 2: The weight is in the middle position and creates an option to transport machine with a crane.

Pos. 3: The weight is mostly on the tool. The tools will be less likely to jump up and slide on top of the material trying to be removed.

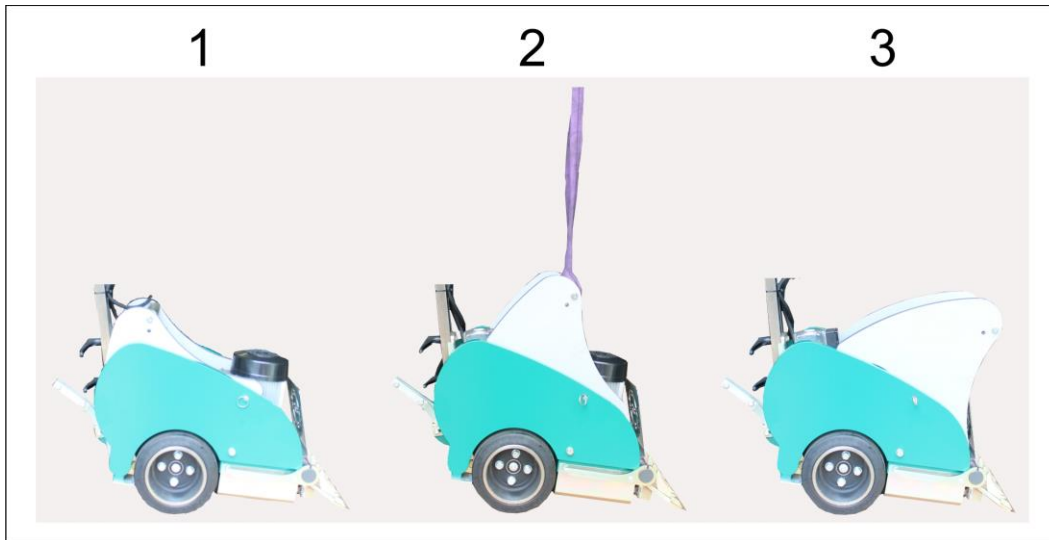


Figure 2: Weight positioning

OPERATION

Operating

The Bull-Stripper removes any bonded floor covering by using a vibrating knife. The knife is driven by an electric motor.

The drive unit is powered by a separate motor.

The blade drive starts as soon as the machine is switched on and can easily be switched off by pressing the emergency stop switch or the red OFF switch. The drive unit motor starts by pressing the safety switch on the handle bar. If the handle bar is pushed forward the drive unit starts to work, and the machine starts to move. The drive can be locked in the moving position by stepping on the foot lever at the bottom of the handle bar.

The Bull-Stripper is equipped with a power-on indicator lamp. If the lamp does not indicate power-on, use another power socket or check power supply.

If a supply power failure occurs during operation, switch the machine on again.

Preparations (Carpets, Coverings)

Before starting work, cut the floor covering into strips of about 35 cm (12 inch). You cannot work faster if you cut wider strips.

To begin, cut one strip crosswise. Then lift the floor covering slightly in order to get the blade underneath it. We recommend that you cut the first strip at right angles to the main working direction. By so doing access to the adjacent strips is made easier.

Cut the strips smaller if the floor covering is bonded very securely, e.g. with an epoxy adhesive. The blades are sharpened by the floor pavement. Therefore, the blade only has to be changed if it is twisted, rounded or becomes worn.

The driving wheels are subject to wear. They must be changed when necessary.

PARTS LIST 1 – BULL

Frame

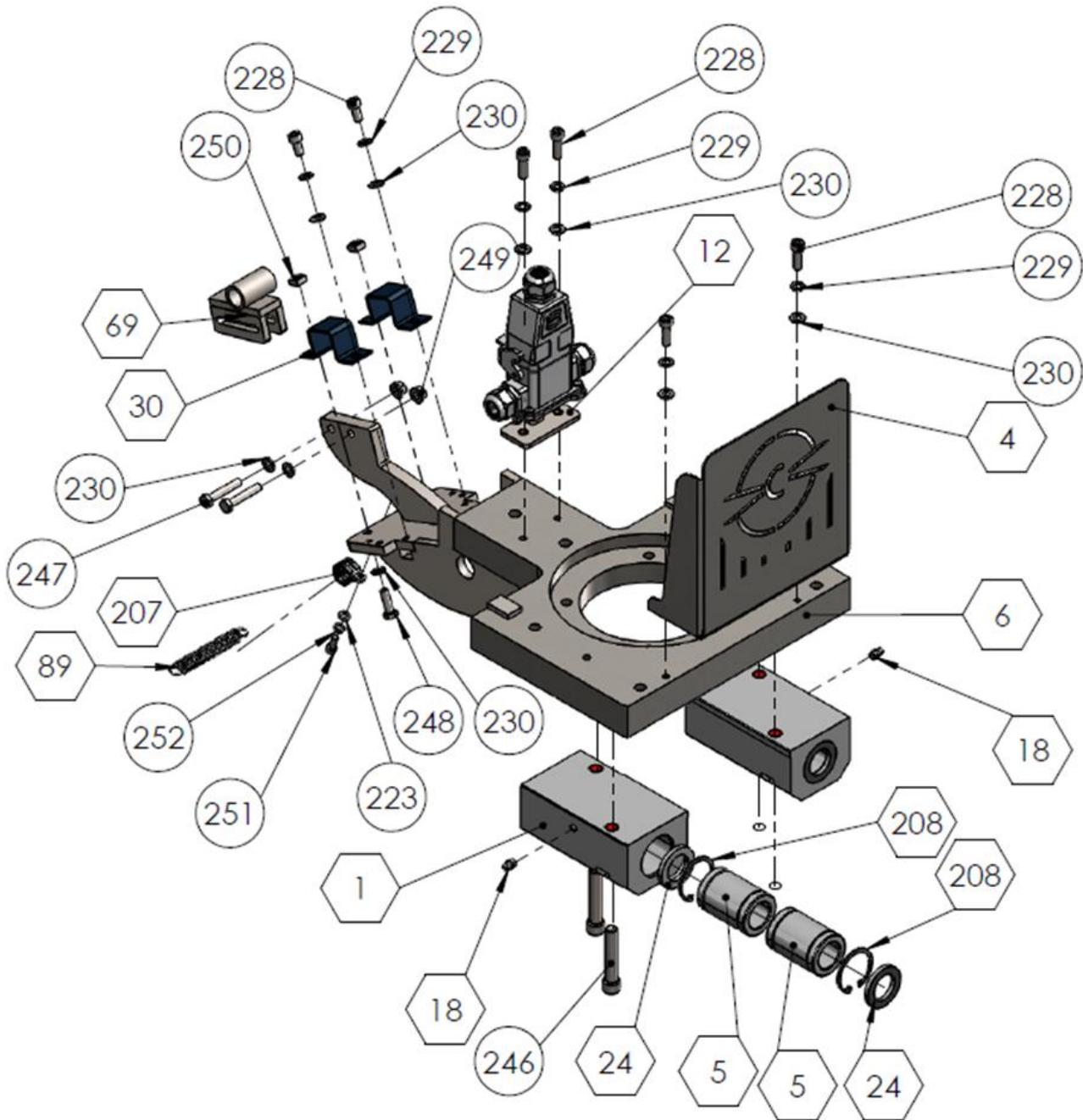


Figure 3: BULL Frame

BULL FRAME – PARTS LIST 1

| Item # | Part # | Description | QTY | Remarks |
|--------|--------------|------------------------------|-----|---------|
| 1 | 8761200130 | Linear bearing housing | 2 | |
| 4 | 8727101500 | Fender Motor | 1 | |
| 5 | 87LBCD30A2LS | Linear-Bearing | 4 | |
| 6 | 8727100100 | Main Plate | 1 | |
| 12 | 8727103204 | Connection bracket | 1 | |
| 18 | 8761210130 | Grease Nipple | 2 | |
| 24 | 87612030201 | Sealing | 4 | |
| 30 | 8770261800 | Bracket for Rubber Block | 2 | |
| 69 | 8727100900 | Bracket for Drive Adjustment | 1 | |
| 89 | 8761411050 | Tension Spring | 1 | |
| 207 | 8705421812 | Hose clamp | 2 | |
| 208 | 8761300147 | Circlip | 4 | |
| 223 | 14447 | Washer, M6 | 11 | |
| 228 | 11769 | Screw, Hexagon M8x16 | 19 | |
| 229 | 11614 | Spring Washer M8 | 10 | |
| 230 | 11667 | Washer M8 | 12 | |
| 246 | 8761310052 | Screw, Allen M12x65 | 4 | |
| 247 | 10452 | Screw, Hexagon M8x40 | 2 | |
| 248 | 11619 | Screw, Hexagon M8x25 | 6 | |
| 249 | 11615 | Nut M8 | 2 | |
| 250 | 8761320002 | Sliding nut M8 | 4 | |
| 251 | 31135 | Screw, Allen M6x16 | 5 | |
| 252 | 10521 | Spring Washer M6 | 3 | |

PARTS LIST 2 – BULL

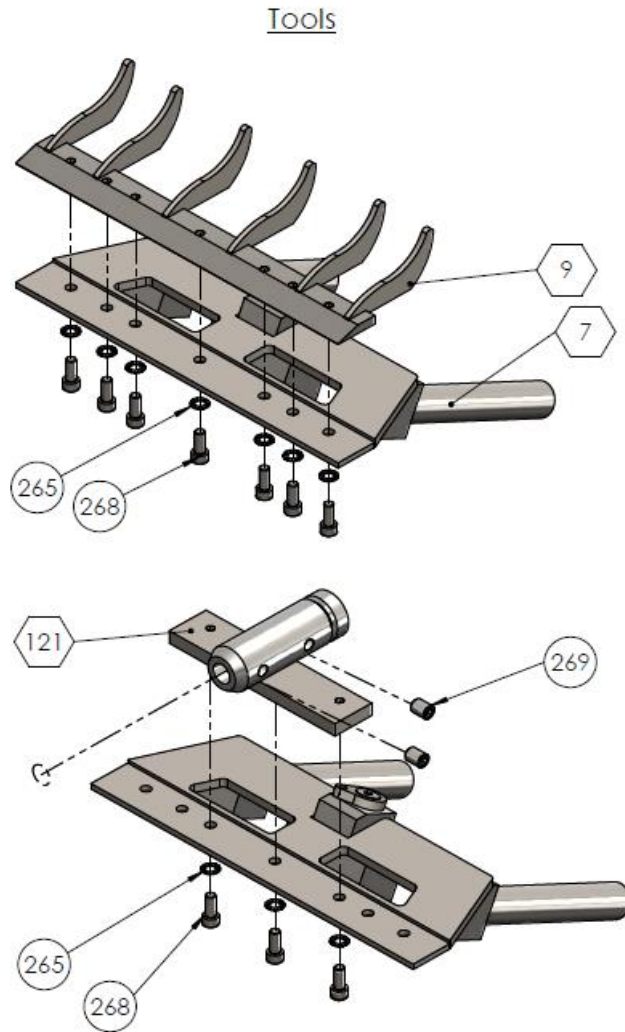


Figure 4: BULL Tools

BULL TOOLS – PARTS LIST 2

| Item # | Part # | Description | QTY | Remarks |
|--------|------------|-------------------------|-----|-------------------------------------|
| 7 | 8727101200 | Blade Holder | 1 | Comes with bracket P/N:872710703 |
| 9 | 8727101703 | Bracket for Blade 350mm | 1 | |
| 121 | 8727101800 | Chisel Holder | 1 | |
| 265 | 8761330016 | Washer, Serrated M8 | 6 | |
| 268 | 31106 | Screw, Allen M8x20 | 5 | |
| 269 | 8761340007 | Threaded pin M8x10 | 2 | |

PARTS LIST 3 – BULL

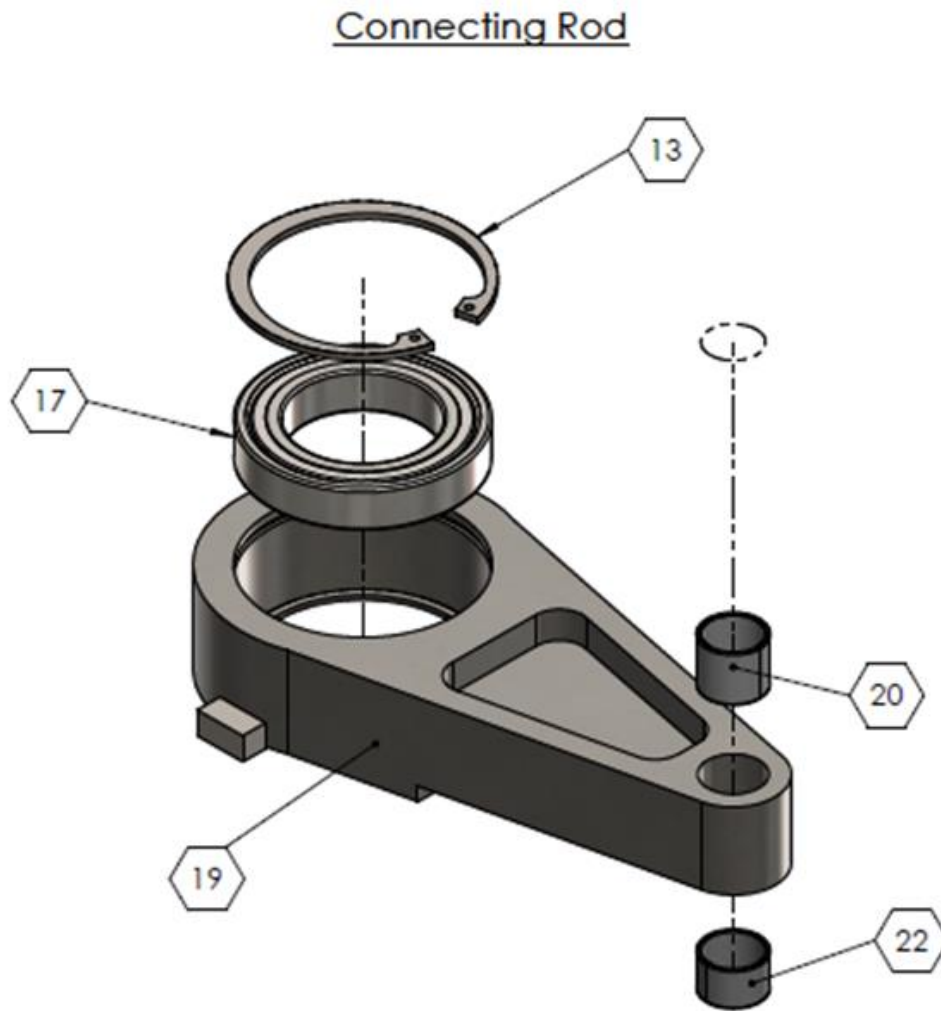


Figure 5: BULL Connecting Rod

BULL CONNECTING ROD – PARTS LIST 3

| Item # | Part # | Description | QTY | Remarks |
|--------|--------------|-----------------|-----|---------|
| 13 | 8747280 | Circlip | 1 | |
| 17 | 876160102ZC3 | Bearing | 3 | |
| 19 | 8727101604 | Connecting Rod | 1 | |
| 20 | 8784833080 | Slide bush 20mm | 1 | |
| 22 | 8784832315 | Slide bush 15mm | 3 | |

PARTS LIST 4 – BULL

Connection Bracket

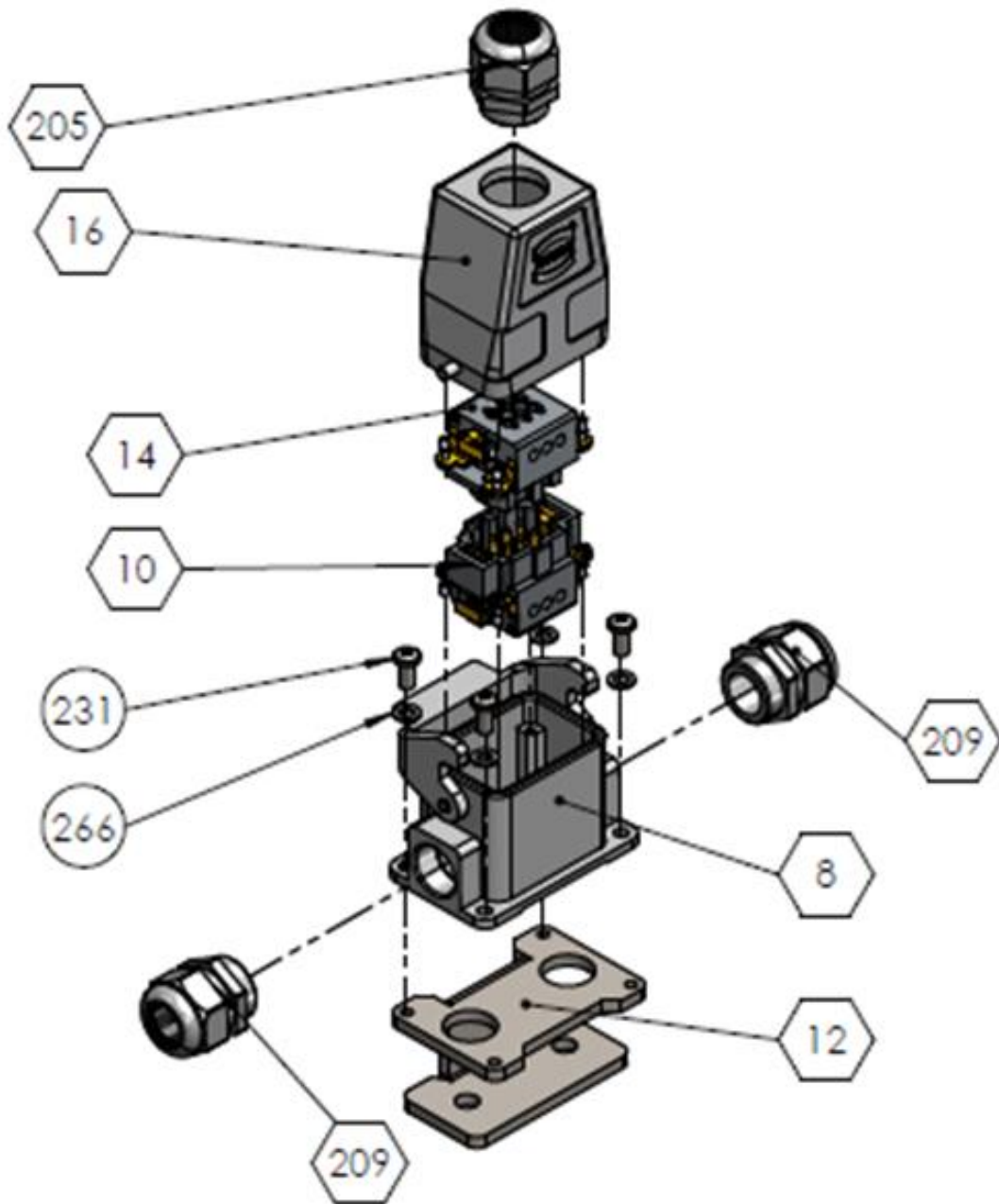


Figure 6: BULL Connection Bracket

BULL CONNECTION BRACKET – PARTS LIST 4

| Item # | Part # | Description | QTY | Remarks |
|--------|---------------|------------------------------|-----|---------|
| 8 | 87212313 | Plug Housing | 1 | |
| 10 | 87502020131 | Plug Pin Mounting | 1 | |
| 12 | 8727103204 | Connection bracket | 1 | |
| 14 | 87502020121 | Jack in the Housing | 1 | |
| 16 | 8750202013 | Socket housing | 1 | |
| 205 | 87502023M25 | Cable Gland | 4 | |
| 209 | 87502023M25MS | Cable Gland | 2 | |
| 231 | 8761310062 | Screw, Skt. Button Hd. M5x12 | 5 | |
| 266 | 8761330042 | Washer, Serrated M5 | 4 | |

PARTS LIST 5 – BULL

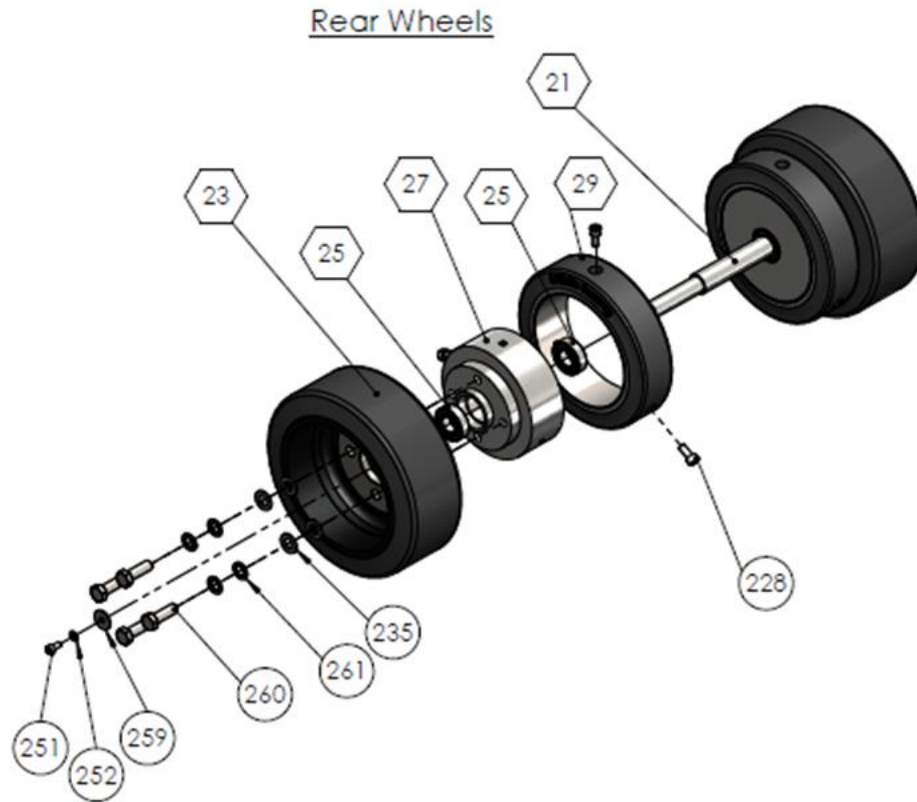


Figure 7: BULL Rear Wheels

BULL REAR WHEELS – PARTS LIST 5

| Item # | Part # | Description | QTY | Remarks |
|--------|------------|-----------------------|-----|---------|
| 21 | 8727101605 | Wheel axis | 1 | |
| 23 | 8780202051 | Drive Wheel | 1 | |
| 25 | 8761206004 | Bearing | 4 | |
| 27 | 8727101607 | Collar | 2 | |
| 29 | 8780202050 | Binding Wheel | 2 | |
| 228 | 11769 | Screw, Hexagon M8x16 | 19 | |
| 235 | 14267 | Washer, M12 | 12 | |
| 251 | 31135 | Screw, Allen M6x16 | 5 | |
| 252 | 10521 | Spring Washer M6 | 3 | |
| 259 | 8761330041 | Washer, Wide 6,4x25 | 2 | |
| 260 | 14269 | Screw, Hexagon M12x35 | 8 | |
| 261 | 10735 | Spring Washer M12 | 8 | |
| 259 | 8761330041 | Washer, Wide 6,4x25 | 2 | |

This Page Left Intentionally Blank

PARTS LIST 6 – BULL

Drive Unit

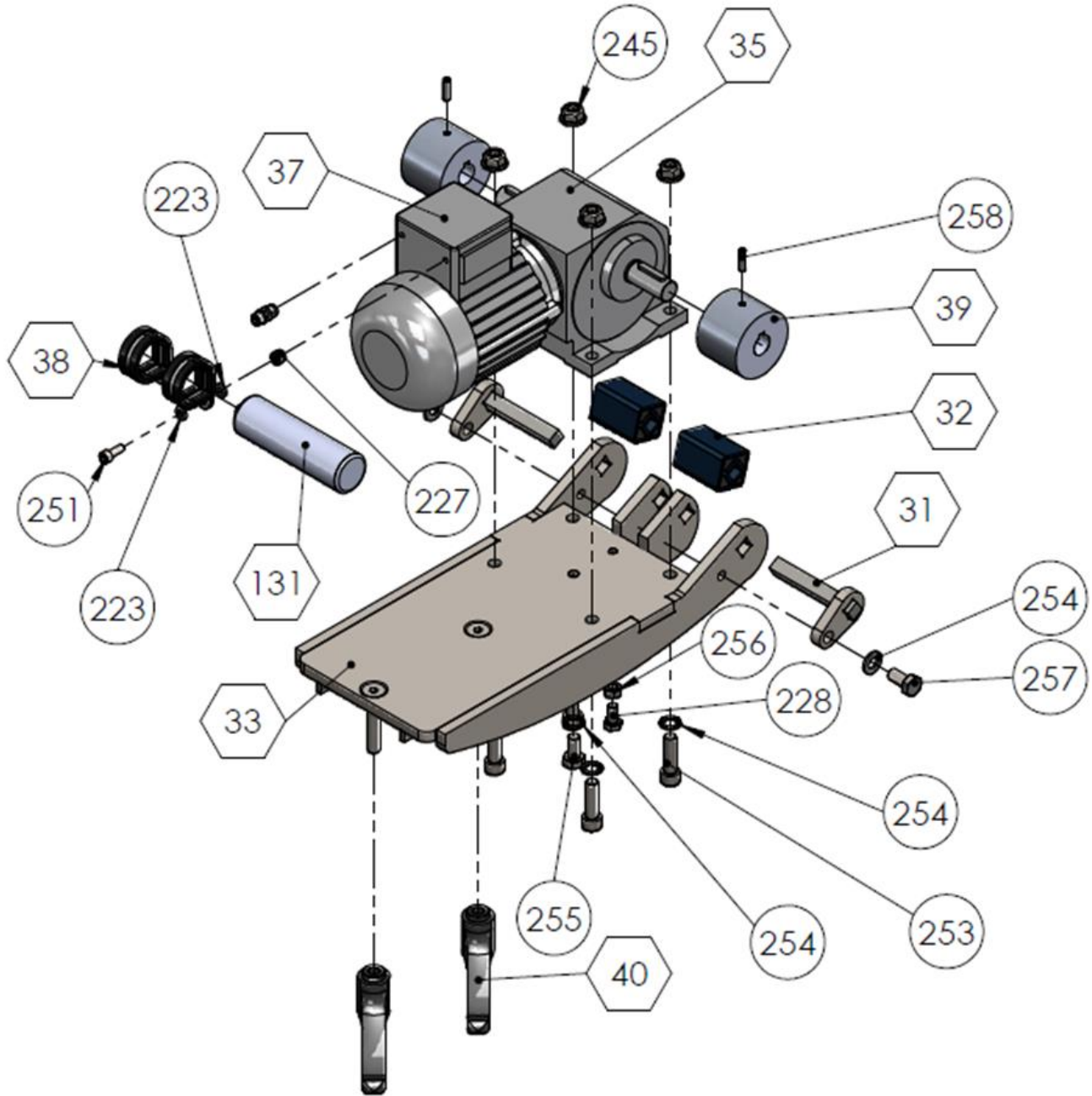


Figure 8: BULL Drive Unit

BULL DRIVE UNIT – PARTS LIST 6

| Item # | Part # | Description | QTY | Remarks |
|--------|--------------|-----------------------|-----|---------|
| 31 | 8727100603 | Square bracket | 2 | |
| 32 | 8770261850 | Rubber Block | 2 | |
| 33 | 8727100600 | Motor mounting plate | 1 | |
| 35 | 8750202041G | Gearbox | 1 | |
| 37 | 8750212241US | Drive Unit Motor | 1 | |
| 38 | 8790270210 | Hose clamp 45 mm | 2 | |
| 39 | 8727101606 | Wheel on Drive Motor | 2 | |
| 40 | 87GN6049510I | Clamping lever | 2 | |
| 131 | 8750212341US | Capacitor | 1 | |
| 223 | 14447 | Washer, M6 | 11 | |
| 227 | 10069 | Nut M6 | 6 | |
| 228 | 11769 | Screw, Hexagon M8x16 | 19 | |
| 245 | 11622 | Nut M10 | 6 | |
| 251 | 31135 | Screw, Allen M6x16 | 5 | |
| 253 | 11753 | Screw, Allen M10x35 | 4 | |
| 254 | 11442 | Washer, Serrated M10 | 6 | |
| 255 | 8761310014 | Screw, Hexagon M10x12 | 1 | |
| 256 | 11615 | Nut M8 | 2 | |
| 257 | 31008 | Screw, Hexagon M10x20 | 2 | |
| 258 | 8761340004 | Threaded pin M6x10 | 2 | |

PARTS LIST 7 – BULL

Handle

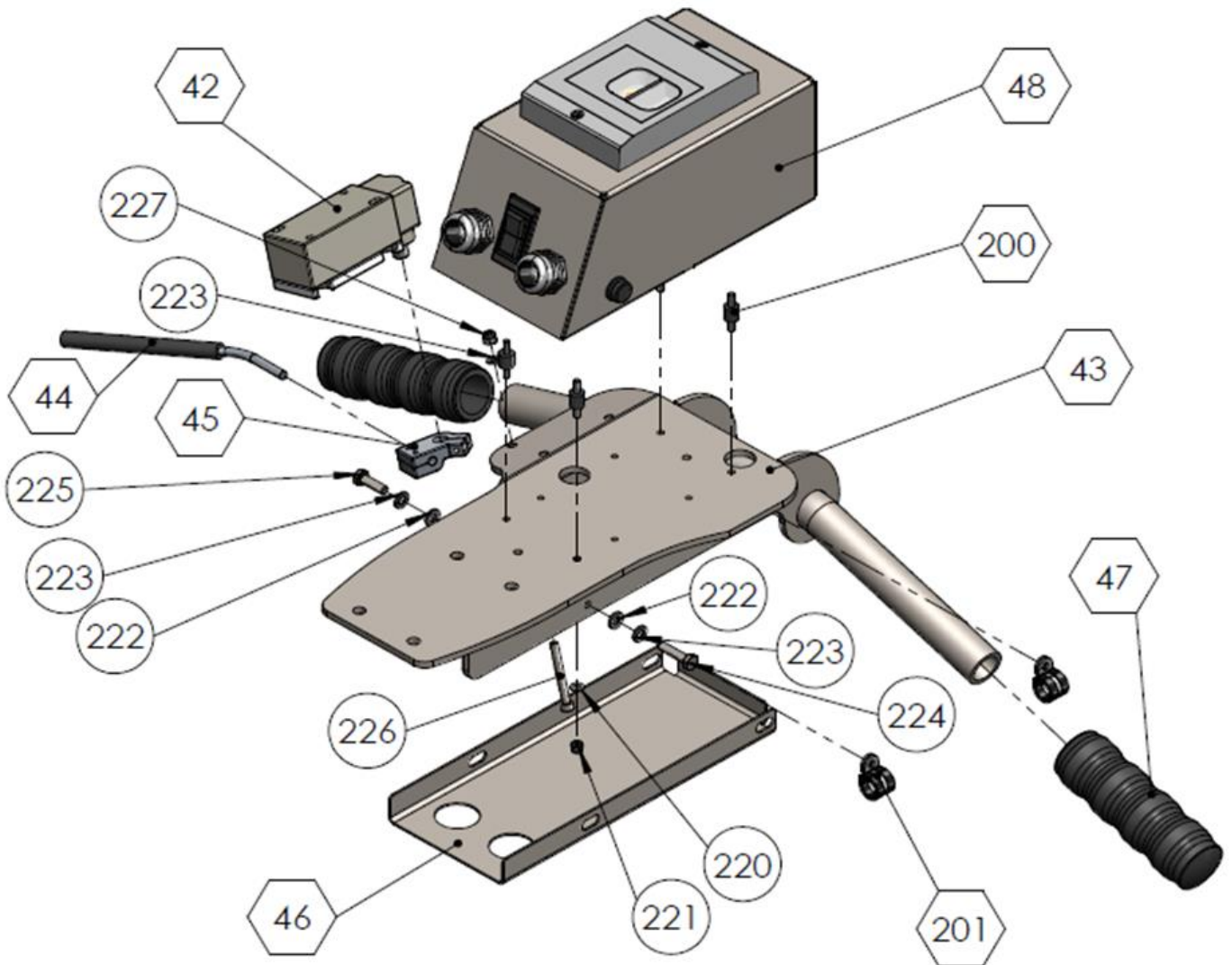


Figure 9: BULL Handle

BULL HANDLE – PARTS LIST 7

| Item # | Part # | Description | QTY | Remarks |
|--------|------------|----------------------------|-----|------------------------|
| 38 | 8790270214 | Hose clamp 40 mm | 2 | |
| 42 | 8750201001 | Drive Unit Switch complete | 1 | Incl. item #42, 44, 45 |
| - | 8750201002 | Drive Unit Switch Head | 1 | Rotary part only |
| 43 | 8727103500 | Handle | 1 | |
| 44 | 8730100304 | Drive Unit Lever Alloy | 1 | |
| 45 | 8730100305 | Handle Connector | 1 | |
| 46 | 8727103600 | Handle Cover | 1 | |
| 47 | 8770212610 | Rubber Grip | 2 | |
| 200 | 8790200026 | Rubber Block | 4 | |
| 201 | 8705421812 | Hose clamp | 1 | |
| 220 | 10076 | Washer M4 | 8 | |
| 221 | 10182 | Nut M4 | 8 | |
| 222 | 8761330007 | Washer, Wide 6,4x18x1,5 | 4 | |
| 223 | 14447 | Washer, M6 | 11 | |
| 224 | 30281 | Screw, Hexagon M6x25 | 1 | |
| | 11746 | | | |
| 225 | 8761310029 | Screw, Hexagon M6x16 | 3 | |
| 226 | 8761310061 | Screw, Allen M6x25 | 1 | |
| 227 | 10069 | Nut M6 | 6 | |

PARTS LIST 8 – BULL

Motor Protective

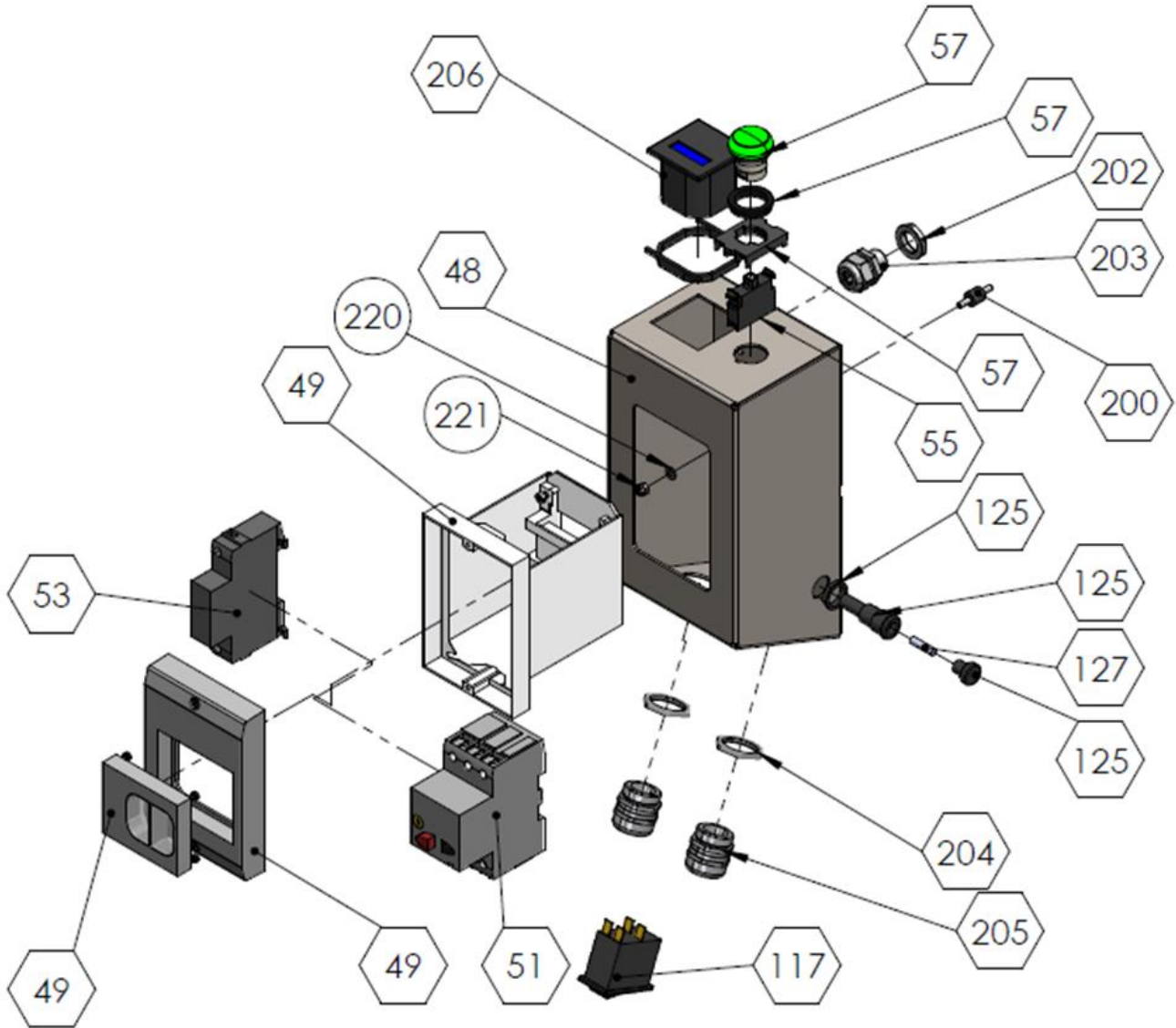


Figure 10: BULL Motor Protection

BULL MOTOR PROTECTION – PARTS LIST 8

| Item # | Part # | Description | QTY | Remarks |
|--------|---------------|------------------------|-----|----------------|
| 48 | 8727103605 | Switchbox | 1 | |
| 49* | 8751111111 | Switch enclosure | 1 | Canada version |
| 51* | 8751111120US | Motor Protective | 1 | Canada version |
| 53* | 8751203001US | Low Voltage Protective | 1 | Canada version |
| 55 | 87502033061 | LED Element | 1 | |
| 57 | 87216773 | Indicator Light | 1 | |
| 117 | 8750201004 | Motor Protective | 1 | |
| 125 | 8750203025 | Fuse Holder | 1 | |
| 127 | 8750203010A | Fuse 10 A | 1 | |
| 200 | 8790200026 | Rubber Block | 4 | |
| 202 | 87502023GMM16 | Nut | 1 | |
| 203 | 87502023M16 | Cable Gland | 1 | |
| 204 | 87502023GMM25 | Nut | 3 | |
| 205 | 87502023M25 | Cable Gland | 4 | |
| 206 | 8750201013 | Hour meter | 1 | |
| 220 | 10076 | Washer M4 | 8 | |
| 221 | 10182 | Nut M4 | 8 | |
| - | 87221 | On/Off Rotary Switch | 1 | US Version |

PARTS LIST 9 – BULL

Drive Adjustment Lever

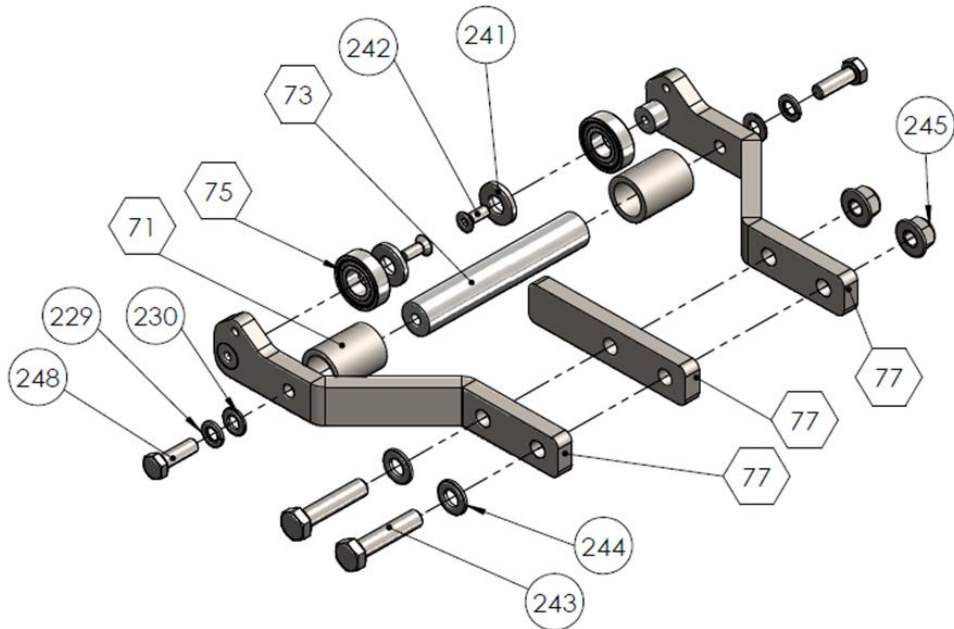


Figure 11: BULL Drive Adjustment Lever

BULL DRIVE ADJUSTMENT LEVER – PARTS LIST 9

| Item # | Part # | Description | QTY | Remarks |
|--------|------------|--------------------------|-----|---------|
| 71 | 8727100801 | Spacer Drive adjustment | 2 | |
| 73 | 8727100802 | Shaft Drive Adjustment | 1 | |
| 75 | 8761206002 | Bearing | 2 | |
| 77 | 8727100800 | Drive adjustment Lever | 1 | |
| 229 | 11614 | Spring Washer M8 | 10 | |
| 230 | 11667 | Washer M8 | 12 | |
| 241 | 8761330026 | Washer, Wide M10x25x3 | 2 | |
| 242 | 10068 | Screw, Countersunk M6x16 | 2 | |
| 243 | 14997 | Screw, Hexagon M10x45 | 2 | |
| 244 | 41516 | Washer, M10 | 6 | |
| 245 | 11622 | Nut M10 | 6 | |
| 248 | 11619 | Screw, Hexagon M8x25 | 6 | |

This Page Left Intentionally Blank

PARTS LIST 10 – BULL

Bearing Housing

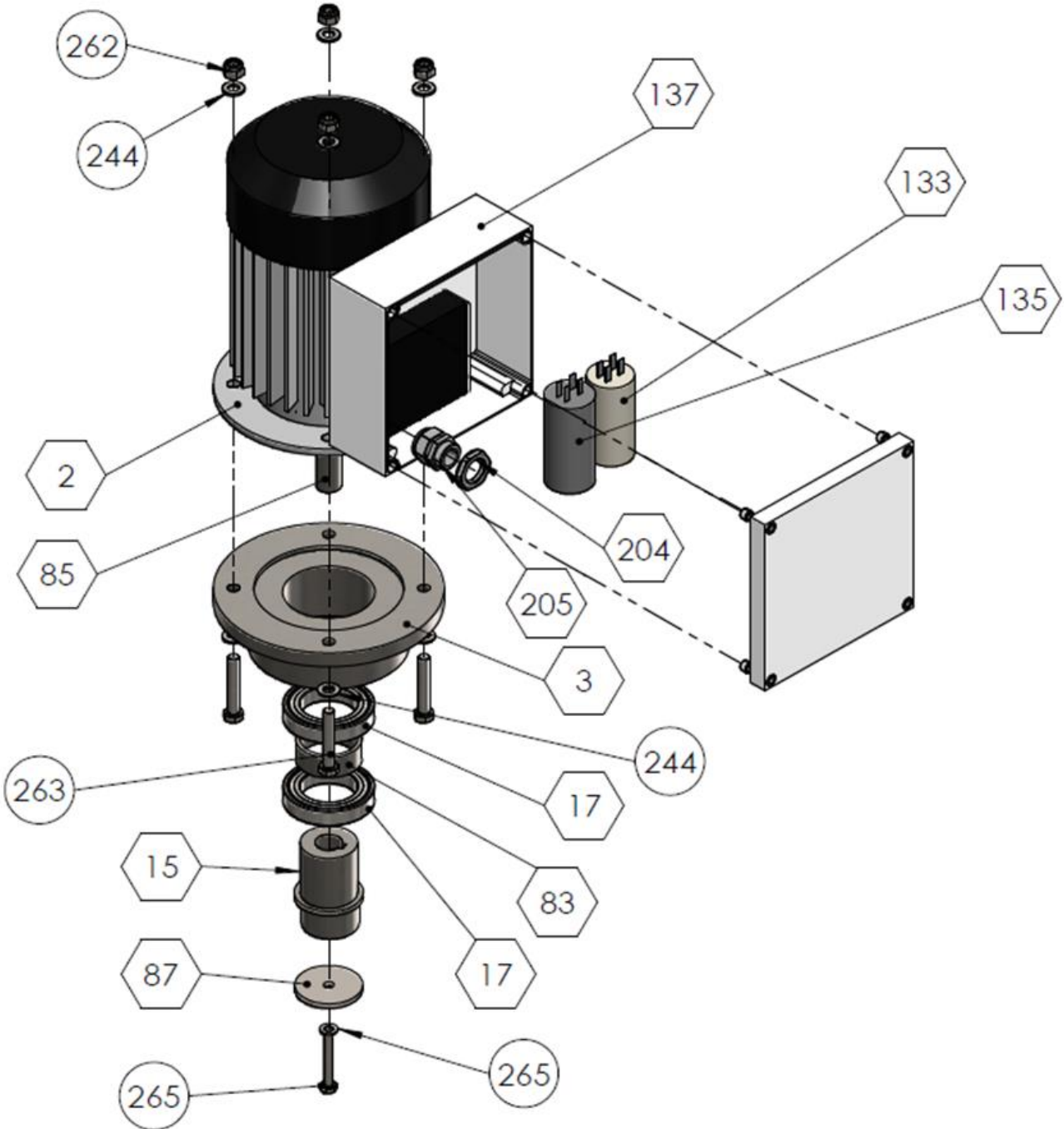


Figure 12: BULL Drive Bearing Housing

BULL BEARING HOUSING – PARTS LIST 10

| Item # | Part # | Description | QTY | Remarks |
|--------|---------------|------------------------|-----|---------|
| 2 | 8755031120US | Motor | 1 | |
| 3 | 8727101601 | Main Bearing Housing | 1 | |
| 15 | 8727101602US | Eccentric Drive Shaft | 1 | |
| 17 | 876160102ZC3 | Bearing | 3 | |
| 83 | 8727112258 | Spacer Bearing Housing | 1 | |
| 85 | 8727101603 | Drive Shaft Spacer | 1 | |
| 87 | 8727101704 | Rod Bearing Washer | 1 | |
| 133 | 8755031126 | Capacitor 540-648yF | 1 | |
| 135 | 8755031125 | Capacitor 40yF | 1 | |
| 137 | 8755010016 | Connection Box | 1 | |
| 204 | 87502023GMM25 | Nut | 3 | |
| 205 | 87502023M25 | Cable Gland | 4 | |
| 244 | 41516 | Washer, M10 | 6 | |
| 262 | 11802 | Nut, Nylon M10 | 4 | |
| 263 | 13349 | Screw, Hexagon M10x70 | 4 | |
| 265 | 8761330016 | Washer, Serrated M8 | 6 | |

PARTS LIST 11 – BULL

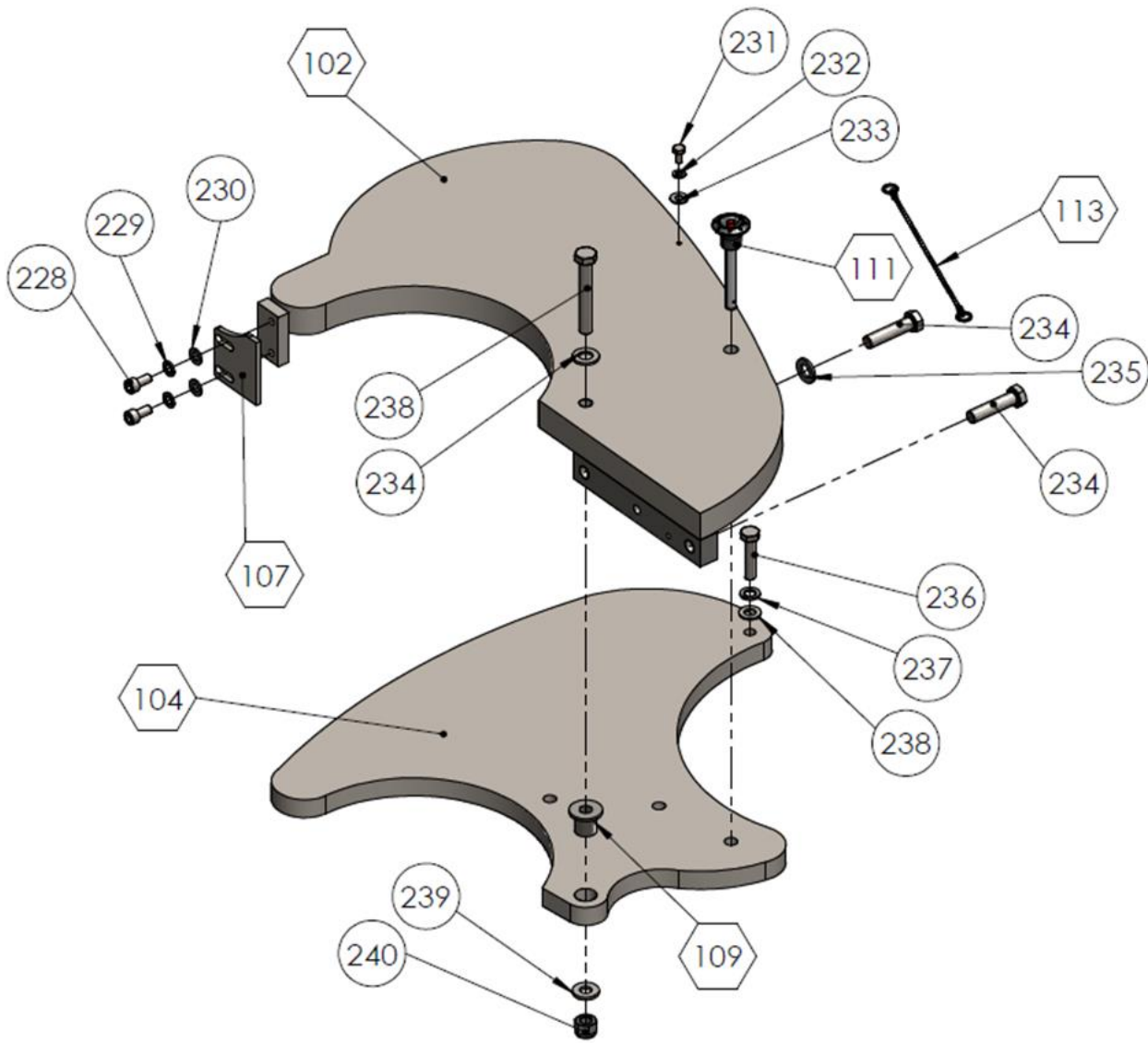


Figure 13: BULL Drive Adjustment Lever

BULL MOTOR PROTECTION – PARTS LIST 11

| Item # | Part # | Description | QTY | Remarks |
|--------|--------------|------------------------------|-----|---------|
| 102 | 8727100401R | Weight outside right | 1 | |
| 104 | 8727100201R | Weight inside right | 1 | |
| 107 | 8727101700 | Scraper | 2 | |
| 109 | 8727101608 | Axis inner Weight | 2 | |
| 111 | 87GN1141070 | Snap Pin | 1 | |
| 113 | 87GN1112014B | Chain for Pin | 1 | |
| 228 | 11769 | Screw, Hexagon M8x16 | 19 | |
| 229 | 11614 | Spring Washer M8 | 10 | |
| 230 | 11667 | Washer M8 | 12 | |
| 231 | 8761310062 | Screw, Skt. Button Hd. M5x12 | 5 | |
| 232 | 11844 | Spring Washer M5 | 1 | |
| 233 | 8761330037 | Washer, Wide 5,3x15x1,25 | 1 | |
| 234 | 60134 | Screw, Hexagon M12x45 | 4 | |
| 235 | 14267 | Washer, M12 | 12 | |
| 236 | 11924 | Screw, Hexagon M10x40 | 2 | |
| 237 | 11621 | Spring Washer M10 | 2 | |
| 238 | 8761330022 | Washer, Wide 10,5x30x3 | 2 | |
| 239 | 8761330040 | Washer, Wide 12,5x35x1,5 | 2 | |
| 240 | 10730 | Nut M12 | 2 | |

This Page Left Intentionally Blank

DECLARATION OF CONFORMITY

Declaration of Conformity / Certificat de conformité / Gelijkvormigheids certificaat Declaración de Conformidad/Declaração de Conformidade/Dichiarazione Di Conformita

| | | |
|-----|---|--|
| We: | Bartell Morrison Inc. 375 Annagem Blvd. Mississauga, Ontario, Canada L5T 3A7 Tel: 647-953-4100 Fax: 647-953-4101 | Bartell Morrison (USA) LLC. 200 Commerce Drive, Unit A Freehold, New Jersey, United States of America 07735 Tel: 848-225-8100 Fax: 848-225-8101 |
|-----|---|--|

Declare under our sole responsibility that the product to which this declaration relates is in conformity with the following standard(s) or other normative documents.

Déclarons sous notre responsabilité que le produit cette déclaration est conforme aux normes suivantes ou d'autres documents habituels.

Verklaren onder onze verantwoordelijkheid dat het product naar welke de verklaring verwijst conform de volgende standaards of anders gebruikelijke documenten is.

Declaramos bajo nuestra única responsabilidad que el producto en lo que esta declaración concierne, es conforme con la siguiente normativa u otros documentos.

Declara sob sua responsabilidade que o produto a quem esta declaração interessar, está em conformidade com os seguintes documentos legais ou normas directivas.

Dichiariamo sotto la ns. unica responsabilità che il prodotto al quale questa dichiarazione si riferisce, è fabbricato in conformità ai seguenti standard e documenti di normative.

| | |
|--------------------|---|
| EN 349:1993 | Safety of Machinery - Minimum gaps to avoid crushing of parts of the human body. |
| EN 418:1993 | Safety of Machinery - Emergency stop equipment, functional aspects - Principles for design |
| EN 12100-1:2003 | Safety of Machinery - Basic Concepts, general principles for design - Part 1: Basic Terminology, methodology |
| EN 12100-2:2003 | Safety of Machinery - Basic Concepts, general principles for design - Part 2: Technical Principles |
| EN ISO 4872:1978 | Acoustics - Measurement of Airborne noise emitted by construction equipment intended for outdoor use - Method for determining compliance with noise limits. |
| EN ISO 5349-1:2001 | Mechanical vibration. Measurement and evaluation of human exposure to hand-transmitted vibration. General requirements |
| EN ISO 5349-2:2001 | Mechanical vibration. Measurement and assessment of human exposure to hand-transmitted vibration. Practical guidance for measurement at the workplace. |

Following the provisions of Directive(s):

Suivant les directive(s) déterminées:

Volgens de vastgestelde richtlijnen:

Siguiendo las directiva(s):

No seguimento das clausulas da Directiva(s):

Seguendo quanto indicato dalla Direttiva(s):

| | |
|------------|--|
| 98/37/EC | Machinery Directive |
| 2000/14/EC | Noise Directive |
| 2001/95/EC | General Product Safety Directive |
| 2002/95/EC | Reduction of Hazardous Waste Directive |

CONTRACTOR PROVEN EQUIPMENT SINCE 1946



BARTELL GLOBAL

170 Traders Blvd E
Mississauga, ON L4Z 1W7
Canada

4701 Allmond Avenue
Louisville, KY 40209
United States

200 Commerce Drive
Freehold, NJ 07728
United States

Honeyholes Lane
Dunholme, Lincoln LN2 3SU
United Kingdom

