

DUST COLLECTOR

R2D2





Bartell Morrison Inc.
170 Traders Blvd E
Mississauga, Ontario, Canada
L4Z 1W7
Tel: (647) 953-4100
Fax: (647) 953-4101

Bartell Morrison USA LLC
200 Commerce Drive, Unit A
Freehold, NJ, USA
07728
Tel: (848) 225-8100
Fax: (848) 225-8101

SPE International Ltd
Honeyholes Lane
Dunholme, Lincoln, England
LN2 3SU
Tel: 01673 860709
Fax: 01673 861119

Innovatech
4701 Allmond Ave
Louisville, Kentucky, USA
40209
Tel: (425) 405-9100
Fax: (425) 405-9101

**ORIGINAL LANGUAGE OPERATING MANUAL FOR
CONTEC DUST COLLECTOR**

© 2024 Bartell Morrison Inc.

No part of this work may be reproduced or transmitted in any form or by any means, electronic or mechanical, including photocopying and recording, or by any information storage or retrieval system without the prior written permission of Bartell Morrison Inc. unless such copying is permitted by federal copyright laws.

Address inquiries or reference permissions care of:
Bartell Morrison Inc., 170 Traders Blvd E., Mississauga, Ontario, Canada, L4Z 1W7

REV.	DATE	DESCRIPTION	APPROVED BY:
00	05/2020	Initial Release	AN
01	03/2024	Updated Parts Diagrams	AN

SAFETY PRECAUTIONS



DANGER EXPLOSION HAZARD

Never operate the machine in an explosive atmosphere, near combustible materials, or where ventilation does not clear exhaust fumes.



WARNING BURN HAZARD

Never come into contact with the engine or muffler when engine is operating or shortly after it is turned off. Serious burns may occur.



CAUTION ROTATING HAZARD

Never place hands or feet inside safety guard rings. Serious injury will result from contact with rotating blades.



CAUTION MOVING PARTS

Before starting the machine, ensure that all guards and safety devices are in place and functioning properly.



ATTENTION READ OWNER'S MANUAL

Read and understand owner's manual before using this machine. Failure to follow operating instructions could result in serious injury or death.

TABLE OF CONTENTS

<u>QUALITY ASSURANCE/ MACHINE BREAK IN</u>	<u>4</u>
<u>WARRANTY INFORMATION</u>	<u>4</u>
<u>SPECIFICATIONS</u>	<u>5</u>
<u>PREVENTATIVE MAINTENANCE AND ROUTINE SERVICE PLAN</u>	<u>6</u>
○ ROUTINE SERVICE SCHEDULE	7
○ ROUTINE SERVICE INTERVALS	7
<u>OPERATING SAFETY PRECAUTIONS</u>	<u>8</u>
<u>OPERATION INSTRUCTIONS</u>	<u>9</u>
○ SETTING UP YOUR CT320 PLANER	9
○ PRIOR TO OPERATION	9
○ CONNECTING THE POWER CABLES	9
<u>PARTS BREAKDOWN</u>	<u>10</u>
<u>PARTS LIST 1 – R2D2 POWER UNIT</u>	<u>11</u>
○ R2D2 POWER UNIT – PARTS LIST 1	12
<u>PARTS LIST 2 – R2D2 FILTER UNIT</u>	<u>13</u>
○ R2D2 FILTER UNIT – PARTS LIST 2	14
<u>PARTS LIST 3 – R2D2 FILTER UNIT/BAG VERSION</u>	<u>15</u>
○ R2D2 FILTER UNIT/BAG VERSION – PARTS LIST 3	16
<u>PARTS LIST 4 – R2D2 CONTROL PANEL</u>	<u>ERROR! BOOKMARK NOT DEFINED.</u>
○ R2D2 FILTER UNIT/BAG VERSION – PARTS LIST 3	ERROR! BOOKMARK NOT DEFINED.
<u>ELECTRICAL SCHEMATIC 1 – R2D2 CONTROL PANEL</u>	<u>17</u>
<u>ELECTRICAL SCHEMATIC 2 – R2D2 COMPRESSOR</u>	<u>18</u>

QUALITY ASSURANCE/ MACHINE BREAK IN

The Contec R2D2 is the product of extensive engineering development designed to give long life and unmatched performance. The Dust Collector are shipped completely assembled.

You can help ensure that your Dust Collector will perform at top levels by observing a simple routine on first use. Consider that your new Dust Collector is like a new car. Just as you would break in a new car to the road or any new machine to the job, you should start gradually and build up to full use. Learn what your machine can do and how it will respond. Full throttle and control may be used after this time period, as allowed by material. This will serve to further break in the machine on your specific application, as well as provide you with additional practice using the machine.

We thank you for the confidence you have placed in us by purchasing a Contec Dust Collector and wish you many years of satisfied use.

WARRANTY INFORMATION

Bartell agrees to furnish without charge, F.O.B. our plant, a replacement for any part or portion thereof, comprising the main unit of the Contec Dust Collector, prove upon our examination, to be defective in either material or workmanship within a period of twelve (12) months from date of purchase, provided that notice of such defective part or portion thereof is given to Bartell Ltd. within the twelve month warranty period. No further or other guarantee or warranty expressed or implied in connection with the sale of the Planer is given and our sole liability consists in replacing defective parts or portions thereof. We shall not be responsible for any special, indirect or consequential damages arising in any manner whatsoever.

This guarantee is for the sole benefit of the original purchaser as end user. Our responsibility under this guarantee ends in the case the original purchaser transfers ownership of the Dust Collector, makes any changes or adds any parts or devices not of our manufacture to the Dust Collector machine.

SPECIFICATIONS

R2D2 – POWER UNIT	
Overall Width, cm (in)	51 (20)
Overall Length, cm (in)	101 (40)
Overall Height, cm (in)	148 (58)
Weight, kg (lb)	160 (353)
Electrical Connection	460V, 60HZ, 3 Phase, 63A (US Version)
Max. Airflow, m ³ /Min	38
Max. Vacuum, Pa (mbar)	10150 (101.5)
Filter Cleaning System	Pulse Jet
Noise level L _{wa}	53 dB(A)
Noise level L _{eq}	71 dB(A)

R2D2 – FILTER UNIT CONTAINER VERSION	
Overall Width, cm (in)	79 (31)
Overall Length, cm (in)	105 (41)
Overall Height, cm (in)	120 (47)
Weight, kg (lb)	120 (264.5)
Filter area, m ³ (in ²)	10
Number of filter cartridges	5
Dust ports, mm	70/125
Volume of dust bin, L	90

R2D2 – FILTER UNIT BAG VERSION	
Overall Width, cm (in)	79 (31)
Overall Length, cm (in)	105 (41)
Overall Height, cm (in)	165 (65)
Weight, kg (lb)	160 (353)
Filter area, m ³ (in ²)	10
Number of filter cartridges	5
Dust ports, mm	70/125
Volume of dust bin, L	2 x 75

ROUTINE SERVICE SCHEDULE

Routine Service Intervals		Each Use	After 1.5 months or 50 hrs	Each 3 months or 100 hrs	Each 6 months or 200 hrs	Each 9 months or 300 hrs	Each 12 months or 400 hrs
General Inspection							
Guards	Check		○	○	○	○	○
Warning Stickers	Check		○	○	○	○	○
Test Run	Check Operation		○	○	○	○	○
Fasteners	Check Tightness	○					
Electrical							
Cord	Check for Damage	○					
Plug	Check for Damage	○					
Switches/Buttons	Check	○					
Dust Collector Components							
Belt Drive	Check Tension			○	○	○	○
Dust Collector Compressor							
Oil Level	Check, Refill if low		○	○	○	○	○
Tank	Drain Water	○					
Air Filter	Clean		○	○	○	○	○
Belt Drive	Check Tension, tighten if needed		○	○	○	○	○
Water Separator Tank	Empty When Full	○					
Motor							
Fan	Check - Clean		○	○	○	○	○

ROUTINE SERVICE INTERVALS

Due to the nature and environment of use, Dust Collectors could be exposed to severe operating conditions. Some general maintenance guidelines will extend the useful life of your machine.

- The initial service for your Planer should be performed after 25 hours of use, at which time your mechanic (or authorized repair shop) should complete all the recommended checks in the schedule above. The maintenance log is handy for keeping a record of the maintenance performed and the parts used for servicing your Planer.
- Regular service according to the schedule above will prolong the life of the Dust Collector and prevent expensive repairs.
- Keeping your Dust Collector clean and free from debris is the single most important regular maintenance operation, over and above the checks in the service schedule above, that can be performed. After each use your Planer should be cleaned to remove any dust and debris from the undercarriage and surrounding components.
- In the Service Schedule above, items that should be checked, replaced or adjusted are indicated by “o” in the appropriate column. For ease of recording place, a checkmark through the “o” when the item is complete. If an item is not required or not completed place an “x” through the “o” in the box.
- Failure to have your Dust Collector regularly serviced and properly maintained in accordance with the manufacturer’s instructions will lead to premature failure and void the warranty.

OPERATING SAFETY PRECAUTIONS

The R2D2 Dust Collector are constructed according to existing safety rules and regulations. These technical precautions should not be removed or changed under any circumstances. While operating the machines the following points should also be kept in mind:

IMPORTANT: NEVER attempt to disable or circumvent these safety devices. They are present for the operator's protection and any tampering will result in substantial risk to the operator and all present at the job site. If your dust collector's safety devices have been tampered with, do not use the equipment. Immediately contact your sales representative to obtain replacement parts or return the dust collector to your dealer for repairs.

The instructions provided in this manual are done so to ensure the operator's safety as well as that of others, the equipment, and the job site. Failure to follow these guidelines can lead to serious personal injury and even death. The operator and any service personnel should read and understand the entire manual before working with or servicing any Contec Dust Collector.

- The dust collector should always be operated with all safety covers and technical precautions.
- During transport, cleaning, repair or maintenance the dust collector must be disconnected from the power supply.
- Never unplug the machine while it is still running
- The operator should never leave the machine unattended during operation.
- Before leaving the machine, all rotary parts should be brought to a standstill. Electric motors must be disconnected from the power supply. Make sure that the machine cannot roll or move by itself.
- After any maintenance and adjustment all safety covers must be reattached.
- Check power cables regularly for damage, as always disconnect from power before inspecting.
- Ear protectors must be worn.
- Eye protectors must be worn.
- Safety shoes with steel caps must be worn.
- Avoid touching the compressor power unit during use or after use.

OPERATION INSTRUCTIONS

SETTING UP YOUR CT320 PLANER

Your R2D2 Dust Collector comes fully assembled. You will only need to attach the necessary power cables and hoses.

PRIOR TO OPERATION

- Make sure that all dust, debris etc., are thoroughly removed from the unit prior to operation.
- Check hoses and power cables for damage and replace or fix as necessary.
- Check all bolts and screws for tightness and make sure all bolts and screws are securely tightened. Loose bolts and screws may cause damage to the unit.

CONNECTING THE POWER CABLES

- Connect the power cable from the power unit of the R2D2 to the electrical connection box included with the R2D2
- Connect the machines power cord to the female 63a connection of the electrical connection box
- Connect the supply power cable to the male 63a connection of the electrical connection box

ATTENTION: Before working on the Dust Collector bring the motor to a total stand still and disconnect from the power supply.

CAUTION: Motors and cables can be hot after use.

OPERATION

Operating

After attaching the hoses and power cables, operation may begin.

Press the start button on the control panel. If the indicator light on the panel does not stay on after releasing the button, then that means the compressor motor wants to start in the wrong direction. In this case there is a switch with the star and delta symbols on it. Turn the switch to the star position, the motor will begin to turn. Wait 10 seconds and turn the switch to the delta position. **It is important to wait until the motor is not increasing speed before you switch over from the “star” to the “delta” position.**

The dust bin of the R2D2 must be emptied during the operation of the machine. How often it needs to be emptied is dependent on the amount of dust produced during operation.

The R2D2 only removes dry dust or material. Wet or greasy dust will block or damage filter cartridges.

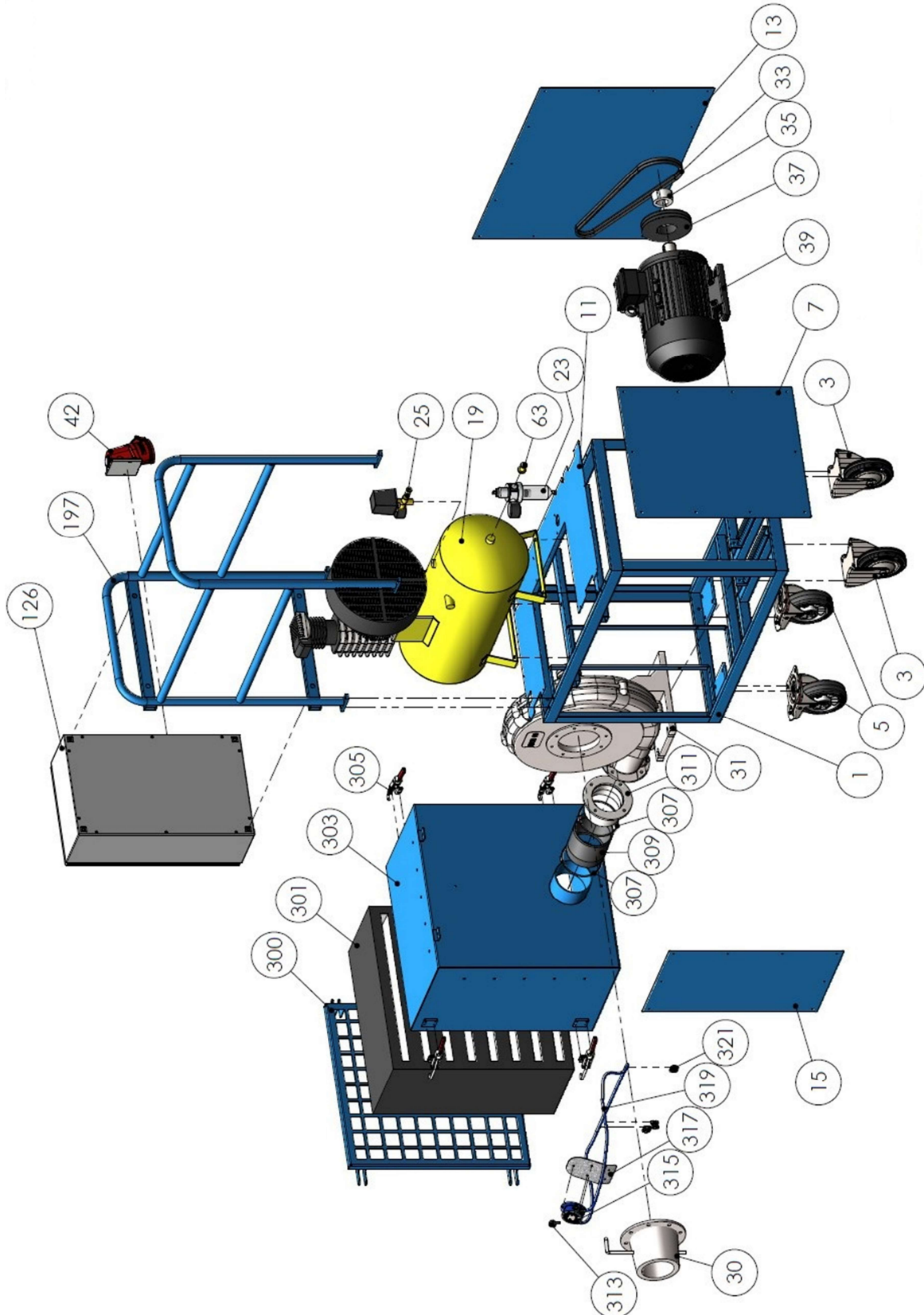
Stopping Procedure

Turn off the machine (Scarifier, Grinder etc.) connected to the Dust Collector, then switch off the dust collector.



PARTS BREAKDOWN

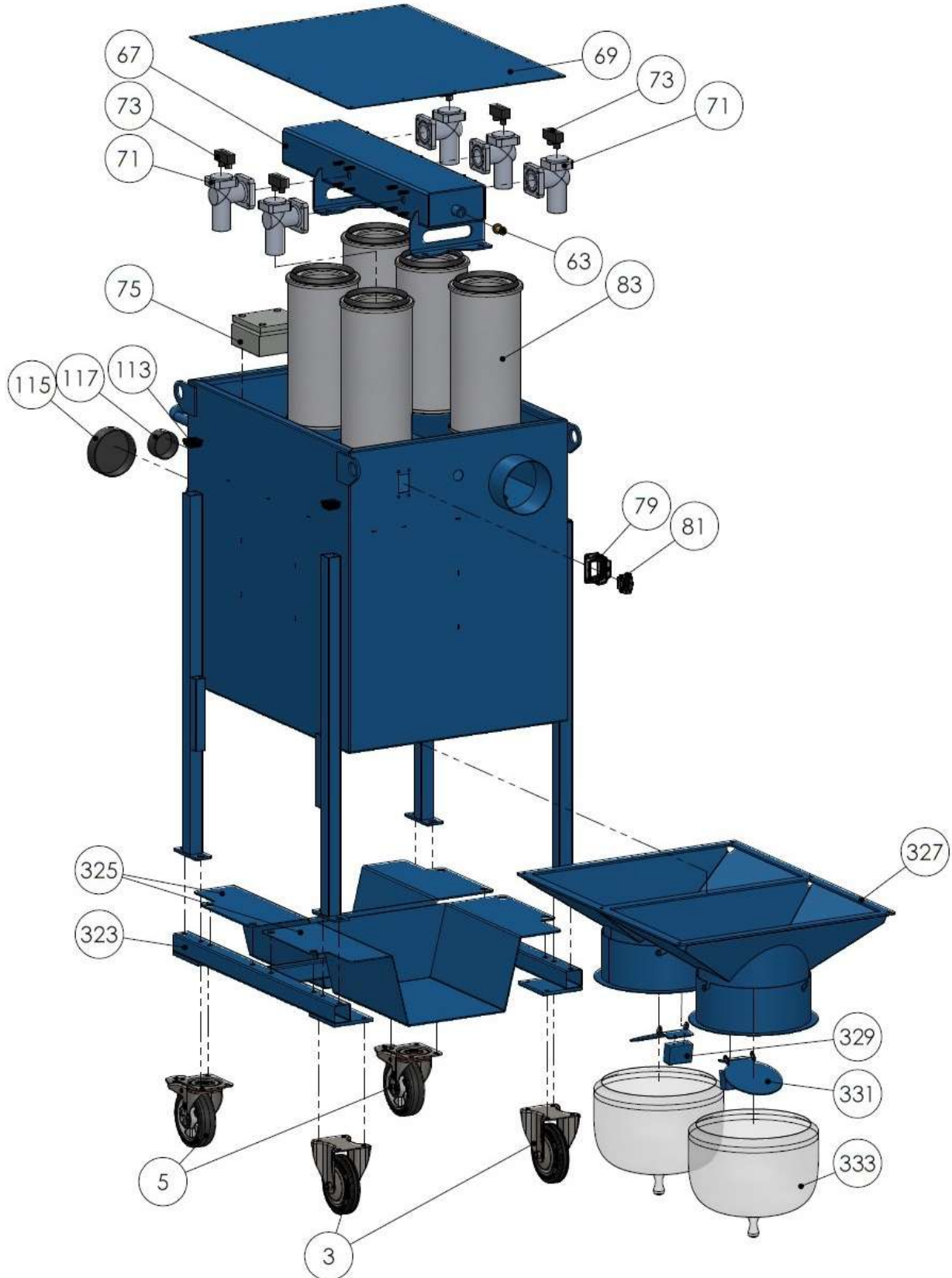
PARTS LIST 1 – R2D2 POWER UNIT



R2D2 POWER UNIT – PARTS LIST 1

Item #	Part #	Description	QTY
1	8713100100	Machine Frame Power Unit	1
3	8780213100	Wheel	4
5	8780213160	Castor	4
7	8713100121	Right Side Cover	1
11	8713100120	Top Cover Power Unit	1
13	8713100118	Back Side Cover	1
15	8713100119	Front Side Cover	1
19	8781000001	Compressor Complete	1
23	8790260143	Water Trap	1
25	877485100030	Compressor Pressure Switch	1
30	8790260061	Throttle	1
31	8790260060	Ventilator	1
33	8770241087	Belt	2
35	879024161038	Taper lock Hub	1
37	8790240132US	Pulley	1
39	8755030044	Motor	1
42	8750202097	Plug	1
63	8790265210	Fitting	3
126	8751101007	Control Panel complete	1
197	8713100112	Protection Bar	1
300	8713100315	Front Lid	1
301	8790205020	HEPA Filter	1
303	8713100313	HEPA Frame	1
305	8790204540	Spanner	4
307	8790271113	Clamp	2
309	8770251291	Hose ø 125 mm	1
311	8713100205	Hose Port	1
313	8790260111	Sensor Port	1
315	8790260110	Manometer	1
317	8713100210	Bracket Manometer	1
319	8770250902	PVC Pipe	1
321	8790270209	Pipe Clip	3

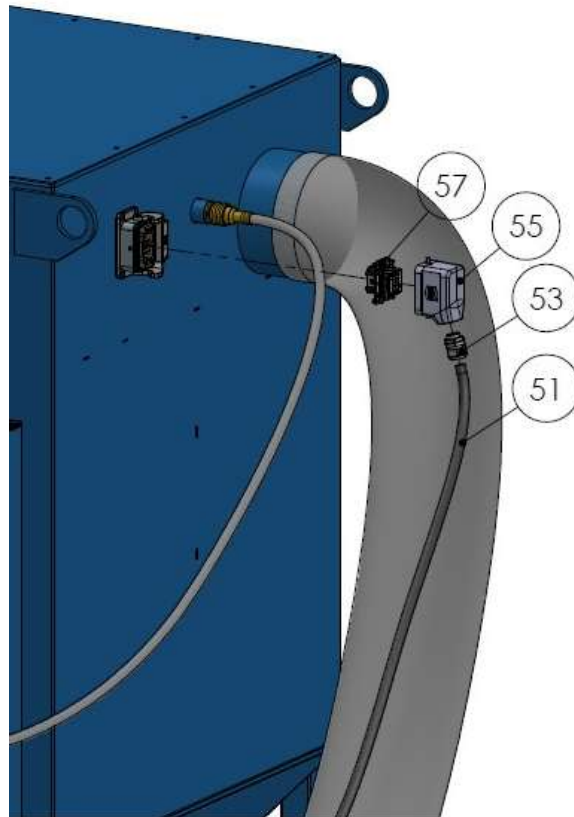
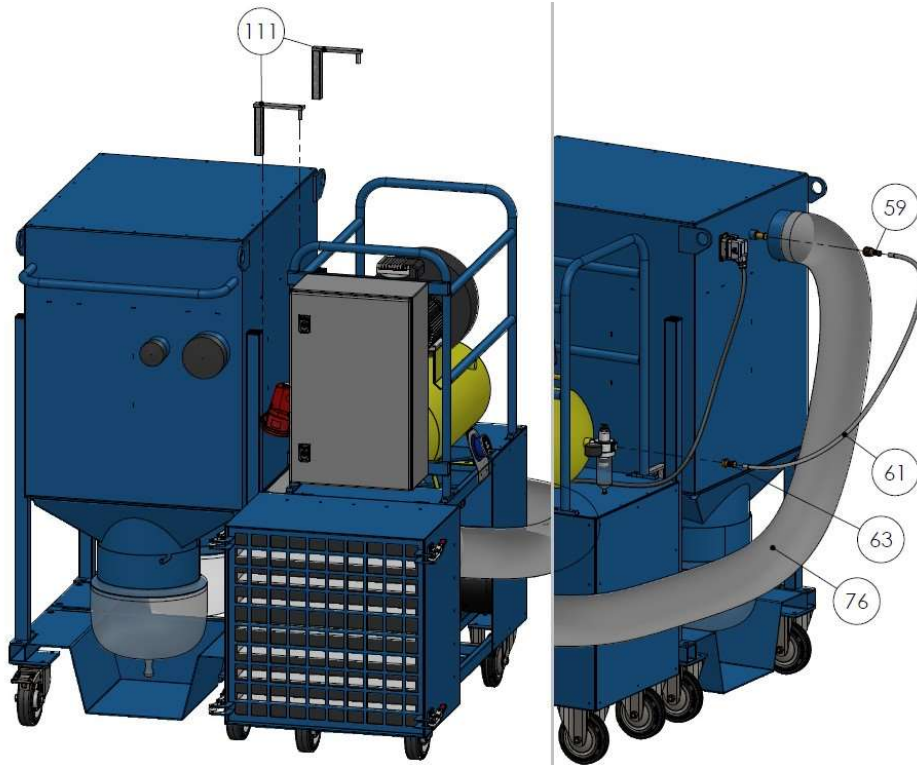
PARTS LIST 2 – R2D2 FILTER UNIT



R2D2 FILTER UNIT – PARTS LIST 2

Item #	Part #	Description	QTY
3	8780213100	Wheel	4
5	8780213160	Castor	4
63	8790265210	Fitting	3
67	8713101100	Pressure Pipe for Valves	1
69	8713100309	Top Cover Filter Unit	1
71	8790260306	Cleaning Valve	5
73	879026030602	Plug for Valve with cable	5
75	8750201514R2	Electric Box	1
79	8750202012	Plug housing	1
81	87502020131	Plug Pin Mounting	1
83	8790204040	Filter Cartridge Tornado/R2D2	5
113	8770270040	Plug	4
115	8770270125	Cap 125 mm	1
117	8770270070	Cap 70 mm	1
323	8716102005	Chassis	1
325	8716105705	Tray	2
327	8716105701	Chute	1
329	8716105703	Flap Bracket	2
331	8716105702	Flap	2
333	8791210004	Longopac 4 x 22 Meter	2

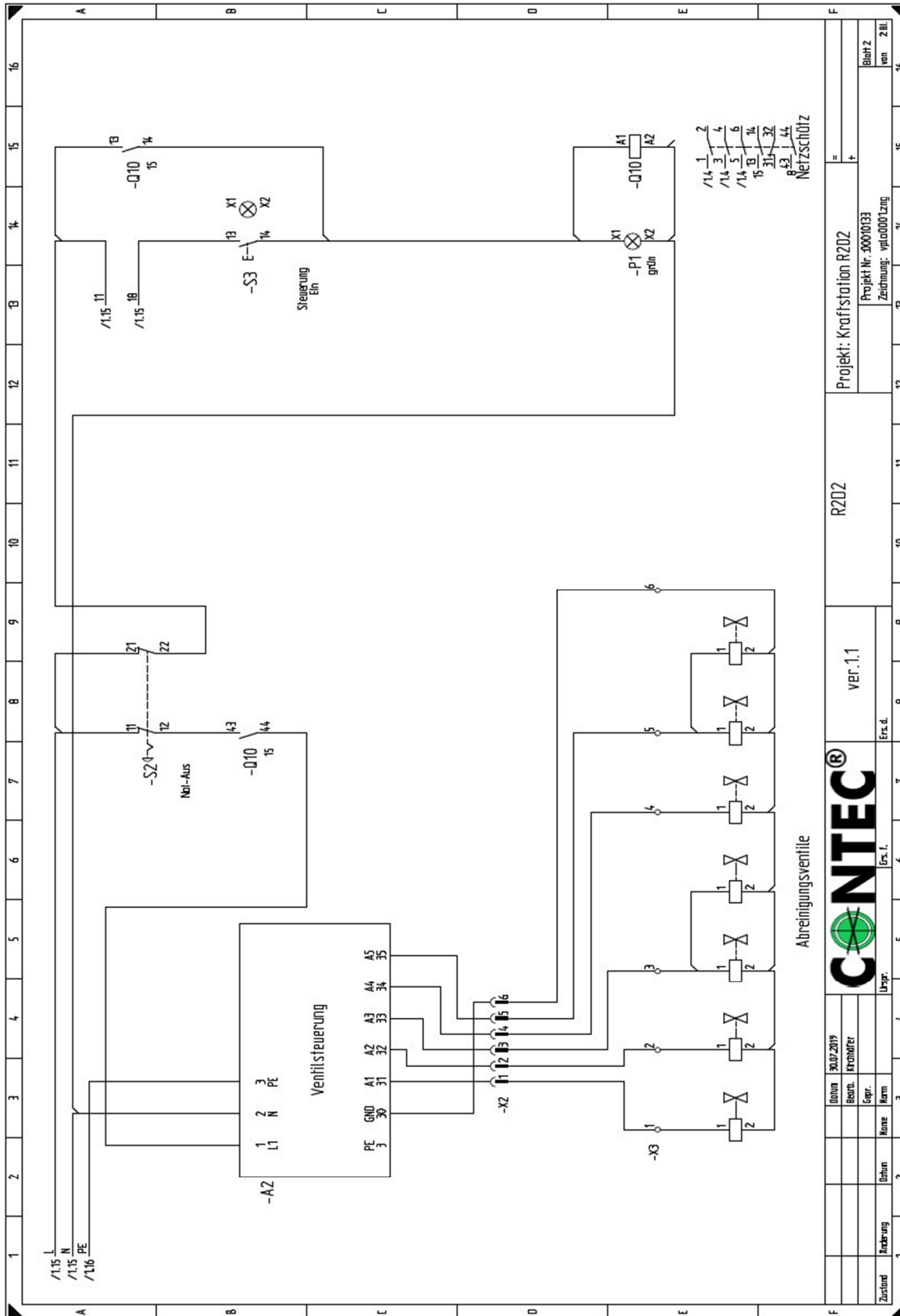
PARTS LIST 3 – R2D2 CONNECTORS



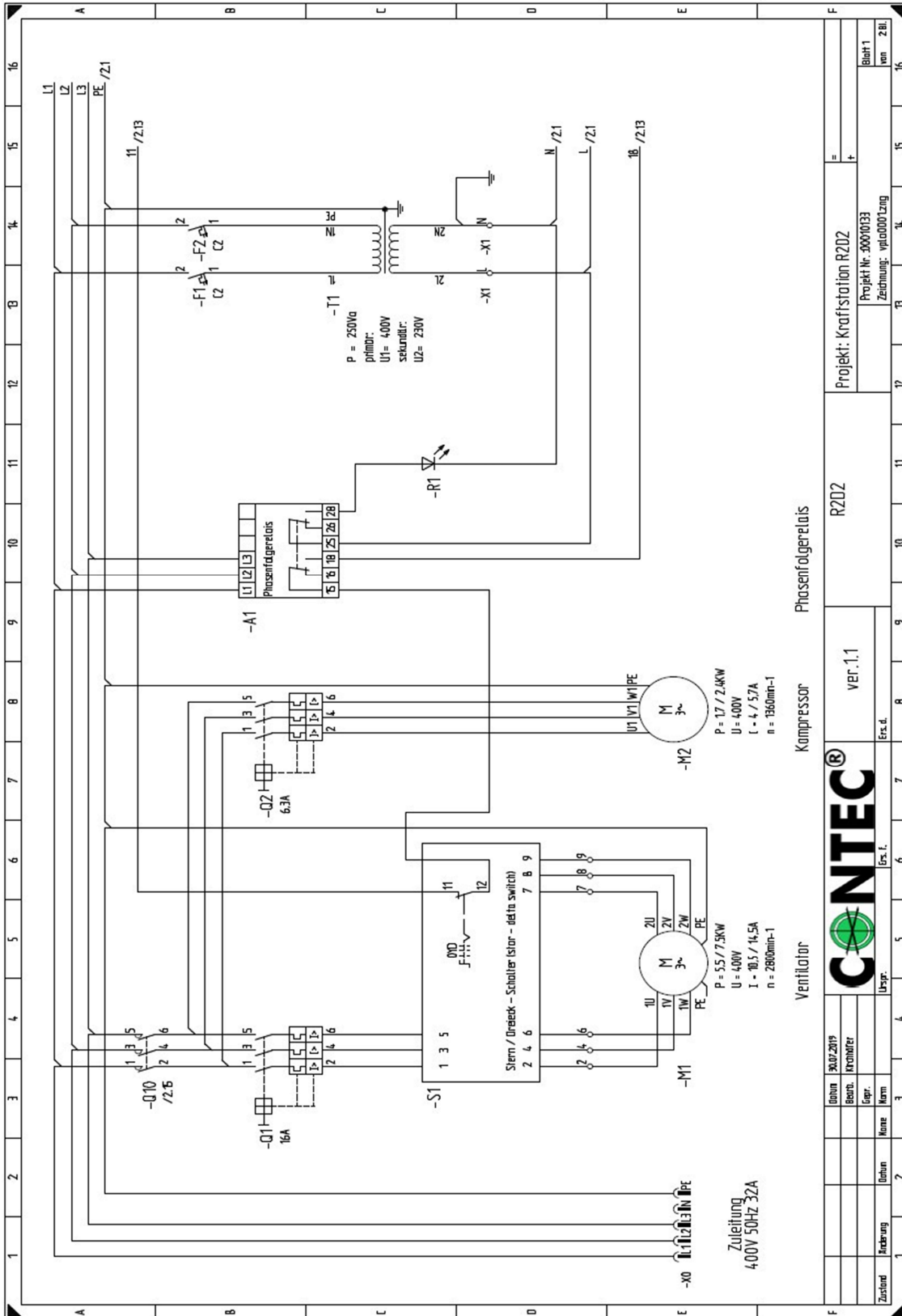
R2D2 CONNECTORS – PARTS LIST 3

Item #	Part #	Description	QTY
51	8750260308	Cable for Valves	1
53	87502023M20	Cable Gland	1
55	8750202013	Socket housing	1
57	87502020121	Jack in the housing	1
59	8790265092	Quick coupling	1
61	8770250225	Pressure Hose	1
63	8790265210	Fitting	3
76	87702511503	Dust Hose 3 Meter	1
111	8713100801	Connector Filter-/Power unit	2

ELECTRICAL SCHEMATIC 1 – R2D2 CONTROL PANEL



ELECTRICAL SCHEMATIC 2 – R2D2 COMPRESSOR





This Page Left Intentionally Blank

CONTRACTOR PROVEN EQUIPMENT SINCE 1946

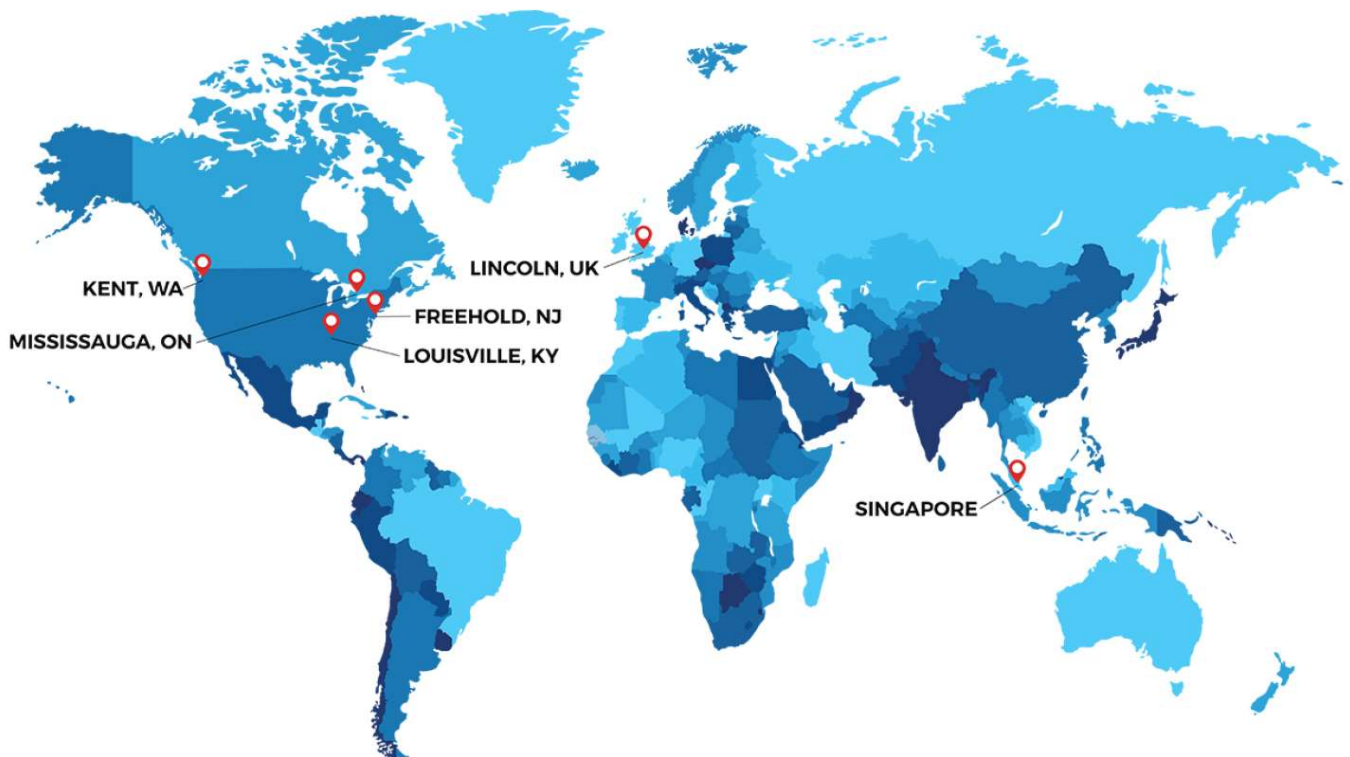


170 Traders Blvd E
Mississauga, ON L4Z 1W7
Canada

4701 Allmond Avenue
Louisville, KY 40209
United States

200 Commerce Drive
Freehold, NJ 07728
United States

Honeyholes Lane
Dunholme, Lincoln LN2 3SU
United Kingdom



BartellGlobal.com