

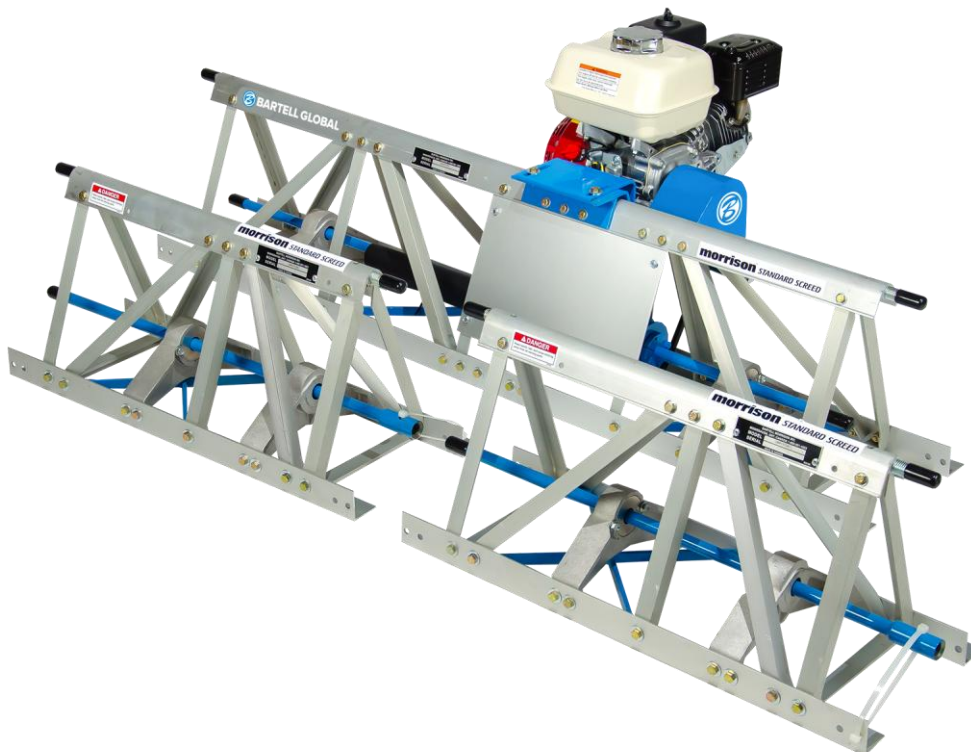


**OWNER'S
MANUAL**

**PARTS
BOOK**

TRUSS SCREED

STANDARD SCREED, SUPER SCREED



Doc. # OIPB-B19040
Orig. Rel. – 01/2025
Curr. Rev - 00

www.BartellGlobal.com

CANADA

170 Traders Blvd E
Mississauga, Ontario L4Z 1W7
TEL (647) 953-4100 FAX (647) 953-4101

KENTUCKY

4701 Allmond Ave
Louisville, Kentucky 40209
TEL (425) 405-9100 FAX (425) 405-9101

UK

Honeyholes Lane
Dunholme, Lincoln, UK LN2 3SU
TEL 01673 860709 FAX 01673 861119

NEW JERSEY

200 Commerce Drive, Unit A
Freehold, New Jersey 07728
TEL (848) 225-8100 FAX (848) 225-8101

**ORIGINAL LANGUAGE OPERATING MANUAL FOR
BARTELL RIDE-ON TROWELS**

© 2023 Bartell Global Inc.

No part of this work may be reproduced or transmitted in any form or by any means, electronic or mechanical, including photocopying and recording, or by any information storage or retrieval system without the prior written permission of Bartell Global Inc. unless such copying is permitted by federal copyright laws.

ADDRESS INQUIRIES OR REFERENCE PERMISSIONS CARE OF:

Bartell Global, 170 Traders Blvd E., Mississauga, Ontario, Canada, L4Z 1W7

REV.	DATE	DESCRIPTION	APPROVED BY:
0	01/2025	New Formatting	A.N

SAFETY PRECAUTIONS



DANGER **EXPLOSION HAZARD**

Never operate the machine in an explosive atmosphere, near combustible materials, or where ventilation does not clear exhaust fumes.



WARNING **BURN HAZARD**

Never come into contact with the engine or muffler when engine is operating or shortly after it is turned off. Serious burns may occur.



CAUTION **MOVING PARTS**

Before starting the machine, ensure that all guards and safety devices are in place and functioning properly.



ATTENTION **READ OWNER'S MANUAL**

Read and understand owner's manual before using this machine. Failure to follow operating instructions could result in serious injury or death.

Personal Protective Equipment (PPE)	
	Hearing Protection Wear earplugs or earmuffs to protect hearing from potentially damaging noise levels
	Eye Protection Wear eye protection to protect eyes from blowing dust, splattering concrete, and other foreign objects
	Safety Footwear Wear safety footwear to protect feet from falling objects, compression and punctures or cuts from surrounding and below
	Hand Protection Protect exposed skin surfaces when working with fresh concrete to avoid skin irritation or chemical burns

Table of Contents

<u>QUALITY ASSURANCE/ MACHINE BREAK IN FOR SCREED</u>	7
<u>WARRANTY INFORMATION- SUPER/STANDARD SCREED</u>	7
<u>SPECIFICATIONS</u>	8
○ STANDARD AND SUPER SCREED SPECIFICATIONS	8
<u>PREVENTATIVE MAINTENANCE AND ROUTINE SERVICE PLAN</u>	9
○ ROUTINE SERVICE SCHEDULE FOR TRUSS SCREED	10
<u>TRUSS SCREED INFORMATION</u>	11
○ GENERAL HEALTH AND SAFETY TIPS	11
○ MAINTENANCE AND CLEANING	12
○ OPERATING TIPS AND REMINDERS	12
<u>ASSEMBLY INSTRUCTIONS</u>	13
○ STANDARD AND SUPER SCREED ASSEMBLY	13
○ ADJUSTING SCREED	18
○ ADJUSTING VIBRATIONS	20
○ INSTALLING HAND WINCH ASSEMBLY	21
○ INSTALLING END ADAPTOR ASSEMBLY	23
<u>PARTS BREAKDOWNS</u>	25
<u>PARTS LIST 1 – ENGINE ASSEMBLY</u>	26
○ PARTS LIST 1 – ENGINE ASSEMBLY	26
<u>PARTS LIST 2 – 5FT BASE SECTION</u>	27
○ PARTS LIST 2 – 5FT BASE SECTION	28
<u>PARTS LIST 3 – 10FT BASE SECTION</u>	29
○ PARTS LIST 3 – 10FT BASE SECTION	30
<u>PARTS LIST 4 – 2.5FT SUBSECTION</u>	31
○ PARTS LIST 4 – 2.5FT SUBSECTION	31
<u>PARTS LIST 5 – 5FT SUBSECTION</u>	32
○ PARTS LIST 5 – 5FT SUBSECTION	32
<u>PARTS LIST 6 – 10FT SUBSECTION</u>	34
○ PARTS LIST 6 – 10FT SUBSECTION	34

<u>PARTS LIST 7 – 2.5FT SELF-PROPELLED (RH)</u>	35
○ PARTS LIST 7 – 2.5FT SELF-PROPELLED (RH)	36
<u>PARTS LIST 8 – 2.5FT SELF-PROPELLED (LH)</u>	37
○ PARTS LIST 8 – 2.5FT SELF-PROPELLED (LH)	38
<u>PARTS LIST 9 – SELF-PROPELLED DRIVE COMPONENTS</u>	39
○ PARTS LIST 9 – SELF-PROPELLED DRIVE COMPONENTS	39
<u>PARTS LIST 10 – SELF-PROPELLED MOTOR ASSEMBLY</u>	40
○ PARTS LIST 10 – SELF-PROPELLED MOTOR ASSEMBLY	40
<u>PARTS LIST 11 – SELF-PROPELLED PUMP ASSEMBLY</u>	41
○ PARTS LIST 11 – SELF-PROPELLED PUMP ASSEMBLY	41
<u>PARTS LIST 12 – WINCH CABLE ASSEMBLY</u>	42
○ PARTS LIST 12 – WINCH CABLE ASSEMBLY	42
<u>PARTS LIST 13 – HYDRAULIC TANK ASSEMBLY</u>	43
○ PARTS LIST 13 – HYDRAULIC TANK ASSEMBLY	43
<u>PARTS LIST 14 – SELF-PROPELLED SHAFT ASSEMBLY</u>	44
○ PARTS LIST 14 – SELF-PROPELLED SHAFT ASSEMBLY	44
<u>PARTS LIST 15 – TURN BUCKLE ASSEMBLY</u>	45
○ PARTS LIST 15 – TURN BUCKLE ASSEMBLY	45
<u>PARTS LIST 16 – PILLOW BLOCK BEARING ASSEMBLY</u>	46
○ PARTS LIST 16 – PILLOW BLOCK BEARING ASSEMBLY	46
<u>PARTS LIST 17 – CAST BEARING ASSEMBLY</u>	47
○ PARTS LIST 17 – CAST BEARING ASSEMBLY	47
<u>PARTS LIST 18 – CONNECTING HARDWARE</u>	48
○ PARTS LIST 18 – CONNECTING HARDWARE	48
<u>PARTS LIST 19 – HAND WINCH ASSEMBLY</u>	49
○ PARTS LIST 19 – HAND WINCH ASSEMBLY	50
<u>PARTS LIST 20 – END ADAPTOR ASSEMBLY</u>	51
○ PARTS LIST 20 – END ADAPTOR ASSEMBLY	51

QUALITY ASSURANCE/ MACHINE BREAK IN FOR SCREED

The Bartell Truss Screed is the product of extensive engineering development designed to give long life and unmatched performance. You can help ensure that your Truss Screed will perform at top levels by observing a simple routine on first use. Consider that your new Truss Screed is like a new car. Just as you would break in a new car to the road or any new machine to the job, you should start gradually and build up to full use. Learn what your machine can do and how it will respond. Refer to the engine manufacturer's manual for run-in times. Full throttle and control may be used after this time period, as allowed by material. This will serve to further break in the machine on your specific application, as well as provide you with additional practice using the machine.

We thank you for the confidence you have placed in us by purchasing a Bartell Truss Screed and wish you many years of satisfied use.

WARRANTY INFORMATION- SUPER/STANDARD SCREED

Bartell Morrison Inc. agrees to furnish without charge, F.O.B. our plant, a replacement for any part or portion thereof, comprising the main unit of the BARTELL SCREED, consisting of the drive shaft assembly and the gear case assemblies, save and except drive belts, and power units, and/or bearing or electrical controls which prove upon our examination, to be defective in either material or workmanship within a period of twelve (12) months from date of purchase, provided that notice of such defective part or portion thereof is given to Bartell Morrison Inc. within the twelve month warranty period. No further or other guarantee or warranty expressed or implied in connection with the sale of the BARTELL SCREED is given and our sole liability consists in replacing defective parts or portions thereof. We shall not be responsible for any special, indirect or consequential damage arising in any manner whatsoever. This guarantee is for the sole benefit of the original purchaser as end user. Our responsibility under this guarantee ends in the case the original purchaser transfers ownership of the BARTELL SCREED, makes any changes or adds any parts or devices not of our manufacture to the BARTELL SCREED.

The Engine has its own manufacturer's warranty. If any issues arise with the engine, please contact the original manufacturer of the engine.

SPECIFICATIONS

Standard and Super Screed Specifications

		Standard Screed	Super Screed
Height		13.5" (34cm)	19.5" (50cm)
Width		12" (30cm)	15" (37Cm)
Weight of	10' Base Section	79lbs (36kg)	94lbs (43kg)
	2.5' Section	27lbs (12kg)	31lbs (14kg)
	5' Section	46lbs (21kg)	55lbs (25kg)
	10' Section	85lbs (39kg)	100lbs (45kg)
	Motor and Mount	53lbs (24kg)	70lbs (45kg)
	Self-Propelled Hydraulic Ends	166lbs (76kg)	166lbs (76kg)
	Hand Winch	40lbs (18kg)	40lbs (18kg)
Engine		Honda GX160	Honda GX270
Net Power		4.8HP (3.6kW)	8.4HP (6.3kW)
Maximum recommended span		45' (13.7m)	70' (21.3m)
Average Peak Vibration		12.830 v.p.m.	14, 000 v.p.m.
Maximum Compaction Depth		12" (304.8mm)	12" (304.8mm)

ROUTINE SERVICE SCHEDULE FOR TRUSS SCREED

Routine Service Intervals		Each Use	After 1.5 months or 50 hrs	Each 3 months or 100 hrs	Each 6 months or 200 hrs	Each 9 months or 300 hrs	Each 12 months or 400 hrs
General Inspection							
Rubber Cap	Check		O	O	O	O	O
Warning Stickers	Check		O	O	O	O	O
Test run:	Operation		O	O	O	O	O
Engine							
Engine Oil	Check level	O	O	O	O	O	O
	Change		O		O		O
Engine Oil Filter	Replace				O		O
Oil Cooler	Clean			O	O	O	O
Cooling Fins	Clean		O	O	O	O	O
Air Cleaner	Check-clean	O	O	O	O	O	O
	Replace						O
Air Intake Line	Check				O		
	Replace						2 yrs
Fan Belt	Check Tightness				O		O
	Replace						500 hrs
Valve Clearance	Check-adjust				O		O
Fuel Filter	Check and Clean			O	O	O	O
	Replace				O		O
Fuel Tank	Clean						500 hrs
Engine Wiring	Check						O

TRUSS SCREED INFORMATION

GENERAL HEALTH AND SAFETY TIPS

- Do not use the Bartell Truss Screed, fitted with a gasoline engine, indoors or in poorly ventilated areas. Ensure there is sufficient ventilation to avoid inhaling exhaust gases, as they may be harmful.
- Avoid touching the electrical cables or spark plug cap while the engine is running to avoid electric shock.
- Check the fuel tank and lines for leaks before starting the engine.
- Wear appropriate personal protective equipment while operating the Bartell Truss Screed.
- Protective footwear, safety glasses, hearing protection, padded gloves, and a dust mask are highly recommended.
- Wear work gloves and safety glasses while refueling the Bartell Truss Screed.
- Ensure sufficient ventilation during refueling to avoid a build-up of dangerous fumes.
- Refuel the Bartell Truss Screed only after the engine has cooled after use.
- Avoid smoking or open ignition sources such as furnaces, welders or torches during refueling.
- Avoid contact of limbs with the vibrating blade or base unit during operation. Use only the handles to control the Bartell Truss Screed.
- Some vibration in the control handles during operation is normal. Take appropriate measures dictated by your workplace regulations to minimize health effects of vibration exposure.
- Regular maintenance and inspection of the Bartell Truss Screed can prevent injuries caused by worn-out or damaged equipment and will extend the useful life of your unit.
- Carry the Bartell Truss Screed by the carry handle, lifting carefully to avoid back injury.
- NEVER carry the Bartell Truss Screed while the engine is running.
- Always avoid direct skin contact with fresh concrete.

MAINTENANCE AND CLEANING

Due to the nature and environment of use, the Truss Screed is exposed to severe operating conditions.

- Some general maintenance guidelines will extend the useful life of your trowel.
- It is highly recommended that all maintenance and repairs are carried out by approved Bartell dealers.
- Always use genuine Bartell replacement parts; use of foreign parts may void your warranty and result in injury or damage to property.
- Refer to your engine manual for details of engine cleaning, maintenance, and your engine's warranty coverage.
- Clean concrete, dust, and residue from the blade and base unit daily. Failure to do so will result in decreased performance and premature failure.
- The blade and lower base unit (i.e. below the engine) can be cleaned with a water sprayer.
- Avoid getting water inside the engine housing or into the on/off switch on the handle.
- Clean the engine ventilation openings using a brush or damp cloth. Dirt, grease, or concrete entering the ventilation openings will reduce engine cooling, leading to premature engine wear and failure. Refer to your engine manual for more information.
- Inspect the Bartell Truss Screed at the end of each working day for signs of wear or damage.
- Store the Bartell Truss Screed in a clean, dry, and dust free place.

OPERATING TIPS AND REMINDERS

1. Before operating this equipment, read all the manuals provided.
2. Keep all guards and covers in good repair and installed in the proper places.
3. Always turn off the engine before refueling.
4. Keep hands, feet and loose clothing away from the screed shaft, drive belt, and engine clutch.
5. Keep hands, feet and loose clothing away from the cable drums and the drive belt area of the hydraulic self-propelled units.
6. Check the shaft connections each day to make sure that the bolts are secure. Replace any bolts that look worn!
7. Do not sit on the screed as this could cause deflection or possibly damage the unit.
8. The screed is designed to finish off concrete NOT to grade it! Keep excess concrete away from the screed blades during the placing operation. Excessive amounts of concrete could cause deflection or damage to the screed. Concrete should be low enough so that the top of the bolts along the screed blades can be seen.
9. Engine should be shut down whenever forward movement of the screed is stopped. Do not allow the engine to idle for more than 2 minutes as damage to the clutch may occur.

ASSEMBLY INSTRUCTIONS

STANDARD AND SUPER SCREED ASSEMBLY

In the next few pages, you will find the proper procedures for assembly and operation of your screed. Please read and follow these instructions carefully to avoid damage to the screed or possible injury due to improper assembly procedures!



When shipped, the engine and the motor mount kit are in two separate boxes. Upon opening the boxes, you should find the following: The engine, clutch, clutch guard, engine mounting plate and a bolt bag with the necessary mounting hardware.



Bolt the engine to the mounting plate. Using the hardware supplied.



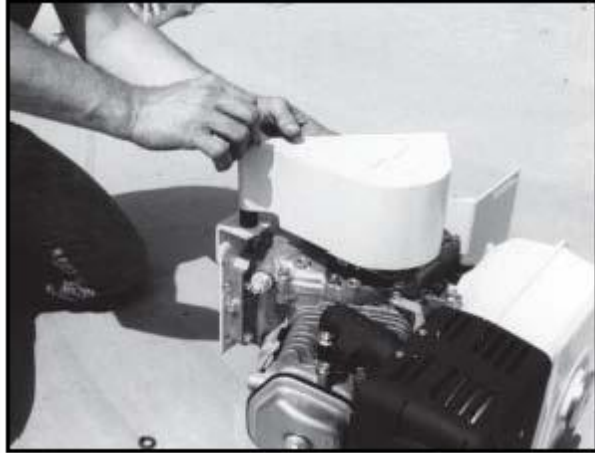
Install the clutch on the engine shaft. On a 10 ft base unit, the pulley side is toward the back of the engine (as shown). On a 5 ft base unit, the pulley side is towards the front of the engine.



In the bolt bag you will find a 1/4"x1/4" key. Align the slot in the clutch with the slot in the engine and insert the key.



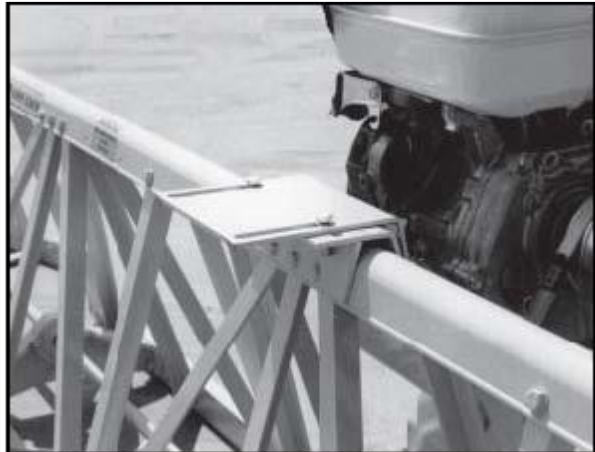
Secure the clutch onto the engine shaft using the proper bolt, flat washer, and lock washer plate provided.



Attach the clutch guard to the engine mounting plate, hand tighten nut.



The main section of the screed is the base unit, with the drive belt and engine mounting bracket attached. Slip the drive belt over the clutch and bolt to the top of the base unit.



Install the bolts, washers, and nuts through the engine mounting plate, and connect the plate to the screed. Do Not Tighten Bolts!



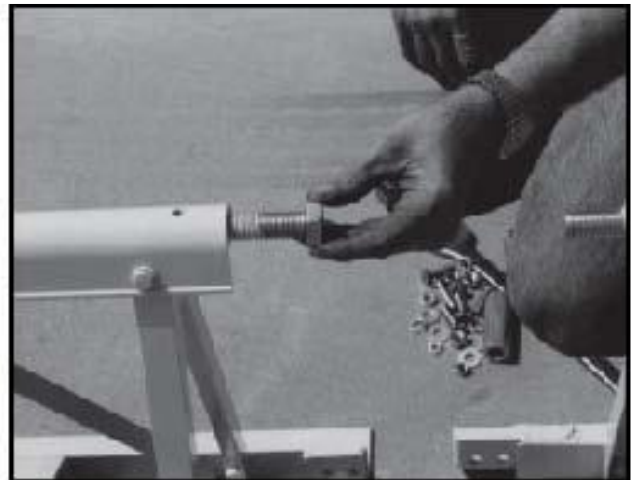
The belt can now be adjusted. The proper tension is about 1/2" of give on the belt when moderate pressure is applied to the center of the belt. Tighten the engine mounting bolts.



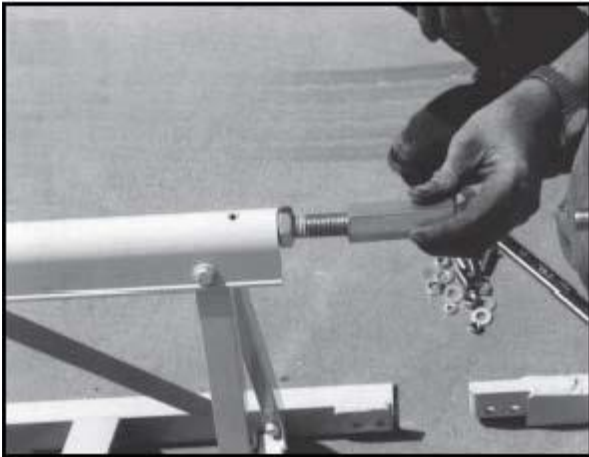
Position the clutch guard over the clutch, and tighten the bolt.



Begin assembly of the screed sections by removing the packing material. Remove the hardware bag attached to each section carefully so that you do not lose any of the hardware inside. NOTE: Sections connect to the left-hand end of the base unit, as you face the screed, starting with the longest section and proceeding to the shortest one. The only exception will be that the right-hand self-propelled unit will bolt to the right-hand end of the base section.



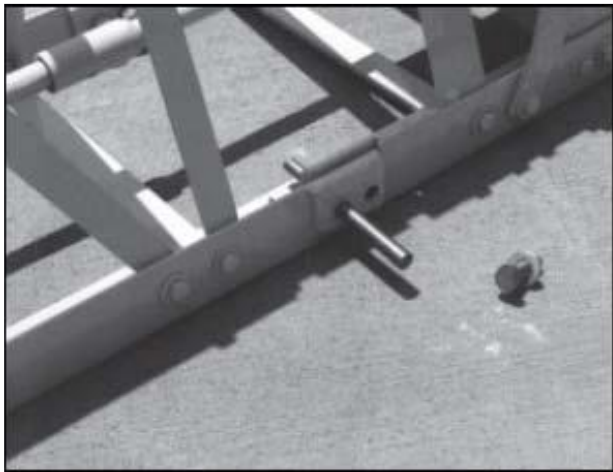
Locate the 3/4" jam nut and install it onto the right -hand threaded rod at the top of the screed.



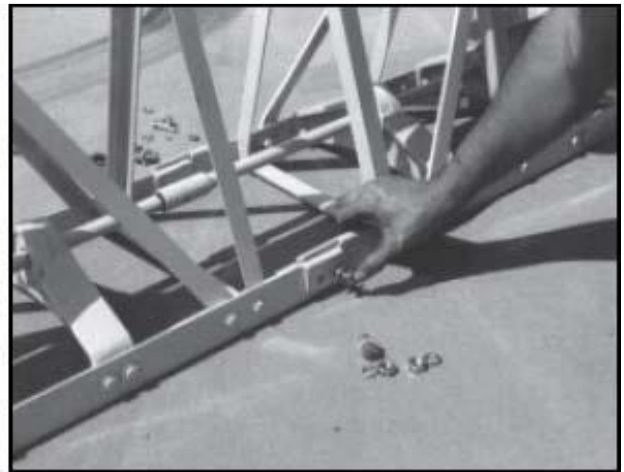
The turnbuckle is the long octagon shaped piece with a left-hand thread at one end and a right-hand thread at the opposite end. Place it on the same right-hand threaded rod as the jam nut, turning it only about one to one and one half turns.



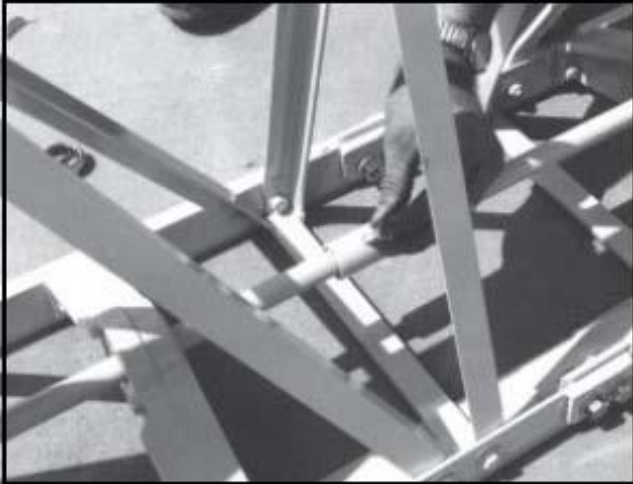
Position the section so that the turnbuckle is aligned with the threaded rod at the top of the section you are joining it with. As the turn-buckle is turned it will begin to draw the two sections together.



Bring the connecting holes into alignment with each other. A drift pin may be helpful here to align the holes for the bolts.



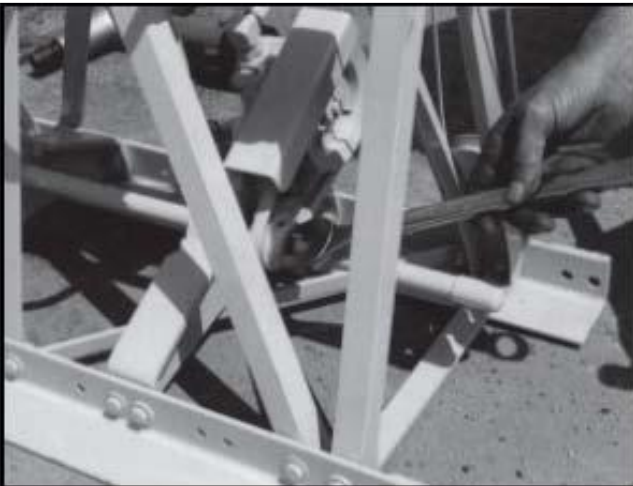
Install the bolts with a flat washer from the outside of the blades, and a lock washer on the inside. After installing all four of the bolts, tighten them securely.



Align the shafts and connect them using the hardware supplied.



When installing the self-propelled units, check the alignment of the shaft pulley to the pump pulley. If alignment is necessary, loosen the set screw, using the Allen wrench provided, and slide the shaft pulley so that it aligns with the pump pulley.



Make sure that the key in the pulley is under the pulley completely before tightening the set screw.

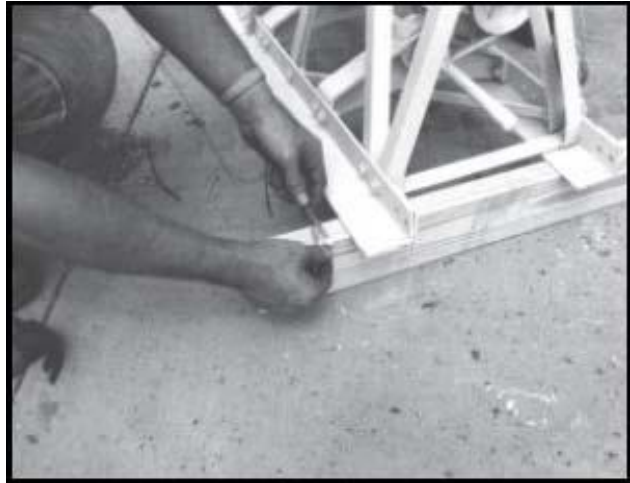


Check the pulley and belt alignment, and make sure that the key is fully inserted under the pulley, tighten set screw.

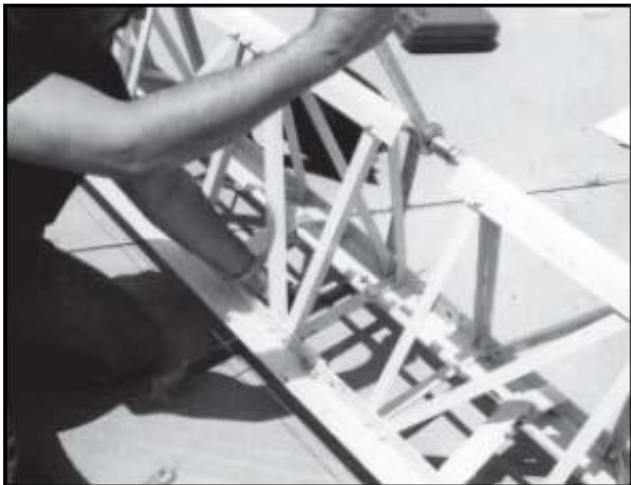
ADJUSTING SCREED



Once the length of screed you need is assembled, place a 2"x4" under each end, or set the screed onto the forms you are using.



Fasten a string to the form and draw it as tightly as possible about 1" off the back of the screed. Make sure the string is not in contact with the screed, or any other object that could cause a variance.



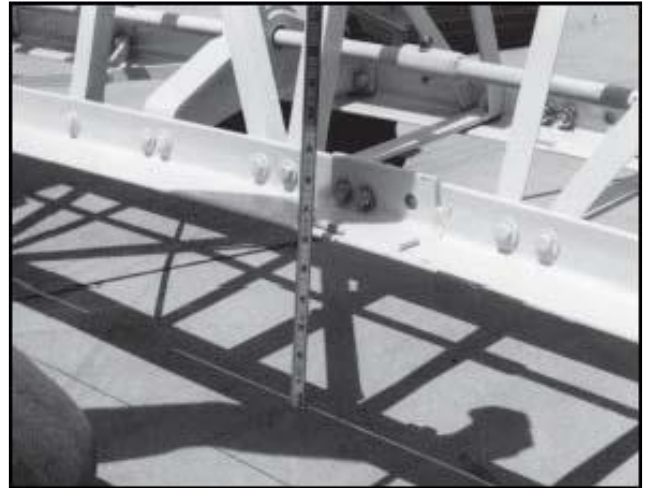
Use a guide placed beneath the blades to determine where adjustment is needed. Begin adjusting the turnbuckles along the top of the screed to align the screed with the string. Adjust the screed from the outside sections and work toward the center. Tighten jam nuts. NOTE: This will probably take several times to get a perfectly flat machine.



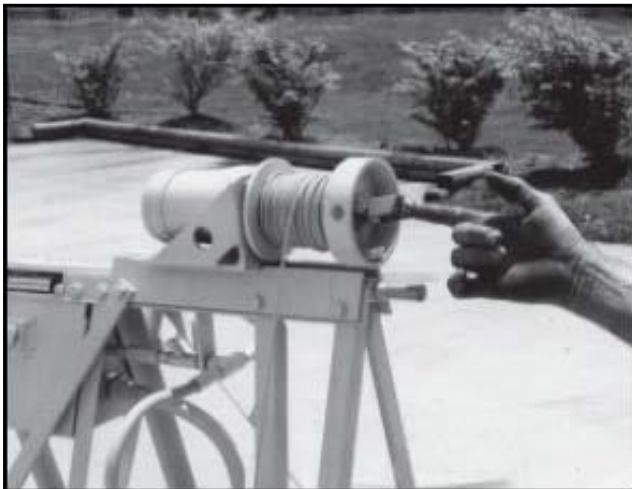
After adjustments are made tighten jam nut securely so that vibration from the screed does not loosen it allowing movement during placing of concrete.



The screed can place concrete in an invert situation of up to 1/4" per foot. Simply locate a turnbuckle where you need the invert and use a ruler and string line to give you the proper measurement. CAUTION: Remember to tighten the jam nut.



The screed can be used to place concrete in a crowned situation of up to 1/4" per foot, such as street paving. Simply follow the same procedure as in the previous illustration. CAUTION: Remember to tighten the jam nut securely after making adjustments.



To operate the self-propelled units, rotate the drum clutch to a horizontal position to disengage it from the drum. Pull the cable out and attach the hook to a stake or other secure object, in line with the cable drum. Return clutch to the original position.



The speed of travel can be adjusted by turning the needle valve located near the hydraulic tank. Clockwise rotation will increase travel speed, and counterclockwise rotation will decrease travel speed.

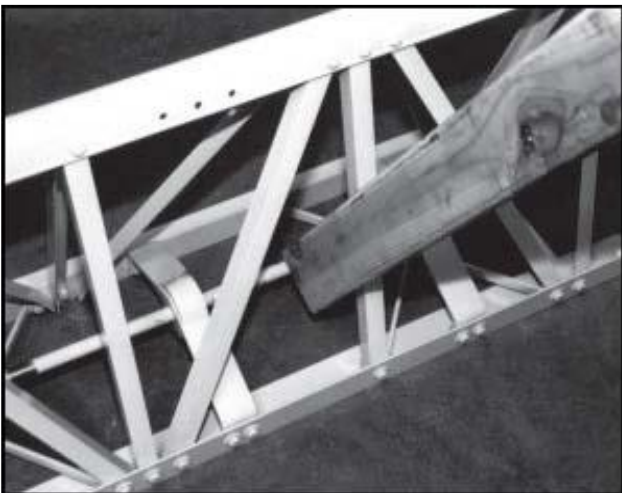
ADJUSTING VIBRATIONS



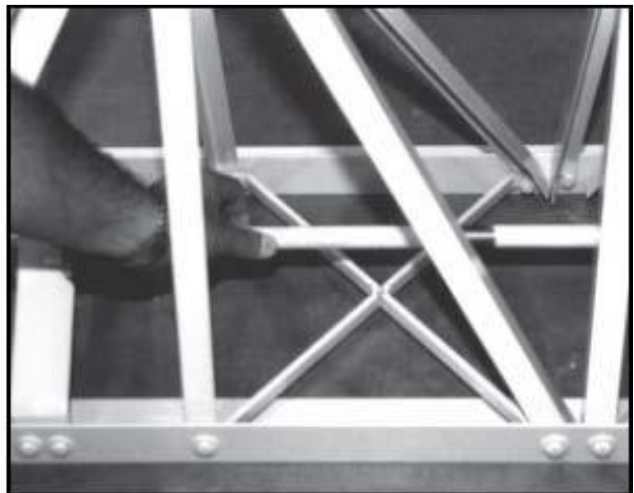
If the screed is not finishing properly, pulling or tearing the concrete, check the engine speeds. The correct RPM setting is 3,450 to 3,600. If the engine RPM's are correct, the screed shaft can be adjusted, within reasonable limits, to increase vibration force.



Rotate the screed shaft at the point between the bearing housings where adjustment is needed. You will notice a slight bend in the shaft. Turn the shaft so that the bend is down or away from you.



Place a 2x4 against the bend and strike the end with a 6lb. to 8lb. hammer firmly. NOTE: The shaft should never be bent over 1/8" or damage to the screed may result. Use extreme caution when bending. Check the shaft before operating the screed.



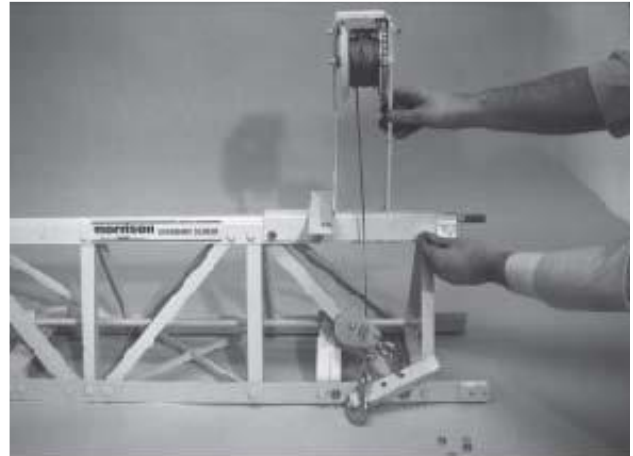
If the screed shaft bent too much you can lessen the bend. Rotate the bend in the shaft towards you and use a 2x4 as described in #3.

INSTALLING HAND WINCH ASSEMBLY

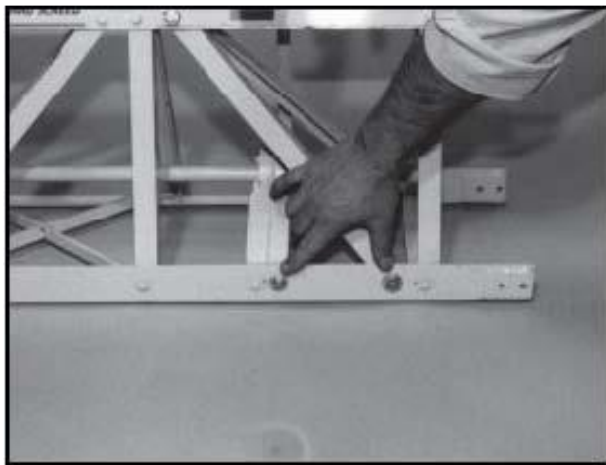
The following instructions will provide complete information for installing the hand winch assembly. Should you need further assistance, contact your dealer or the call factory direct.



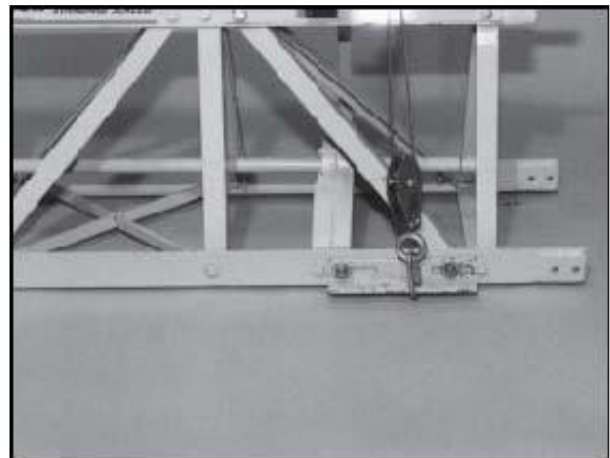
Begin installation by removing the last two bolts from the front and rear at one end of the camber top from the section of screed that you will be using.



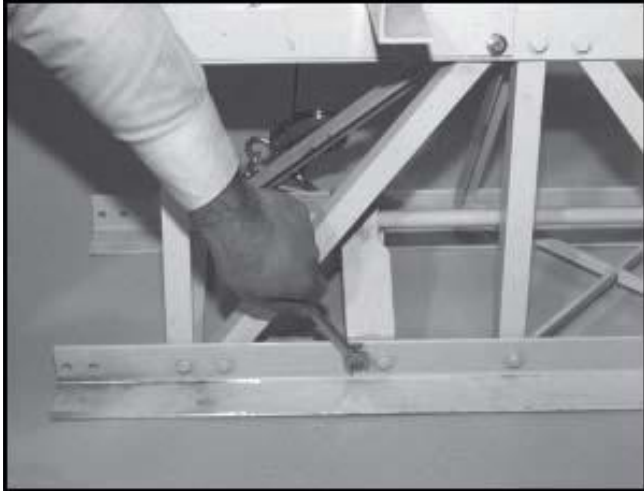
Place the winch, crank lever out, onto the camber top. Replace the bolts with the longer ones supplied.



On the front blade of the screed, remove the bolts from the angle brace and the cast bearing housing and install the cable pulley bracket, as shown.



Connect the block pulley bracket to the front blade of the screed. Replace the bolts with the longer ones supplied.

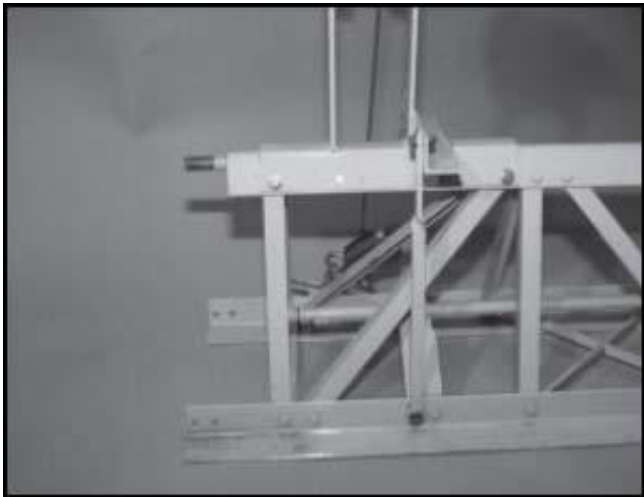


On the rear blade of the screed, remove the bolt from the cast bearing housing nearest the end of the screed.

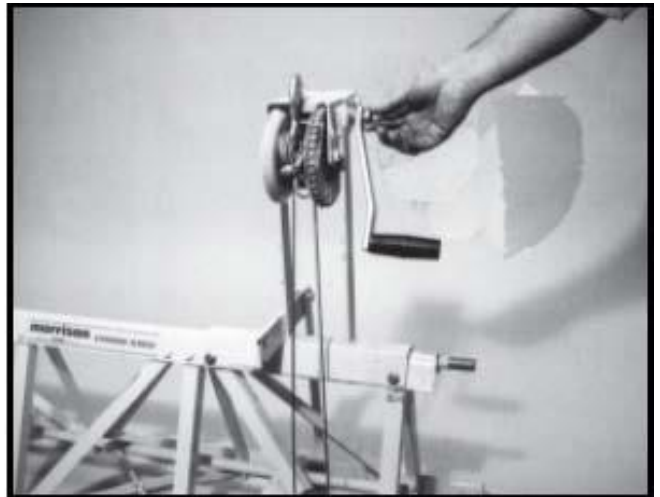


In the package there is a long brace and a short one. These two bolt together at the twisted end of the long one.

NOTE: Standard Screed does not require this step.



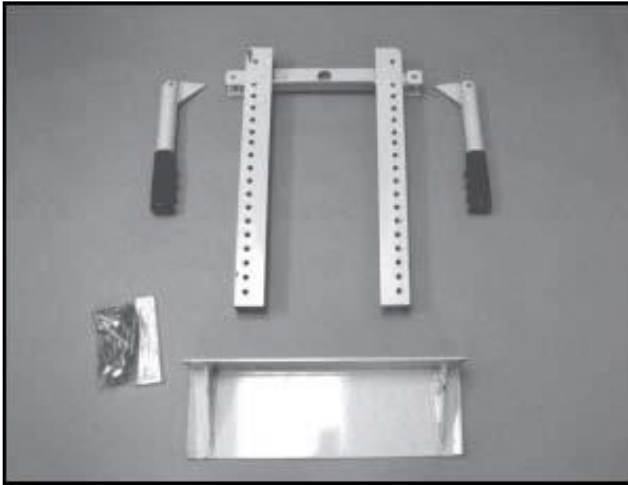
Bolt the brace to the rear of the screed blade and the angle bracket using hardware provided.



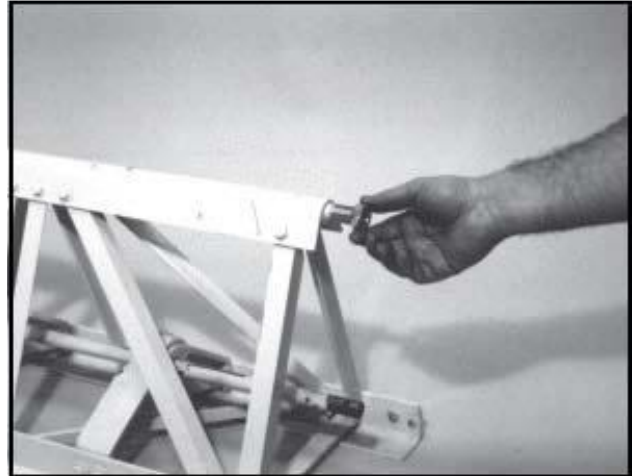
Place the crank handle onto the rod and tighten securely using the locking nut provided. The installation is now complete!

INSTALLING END ADAPTOR ASSEMBLY

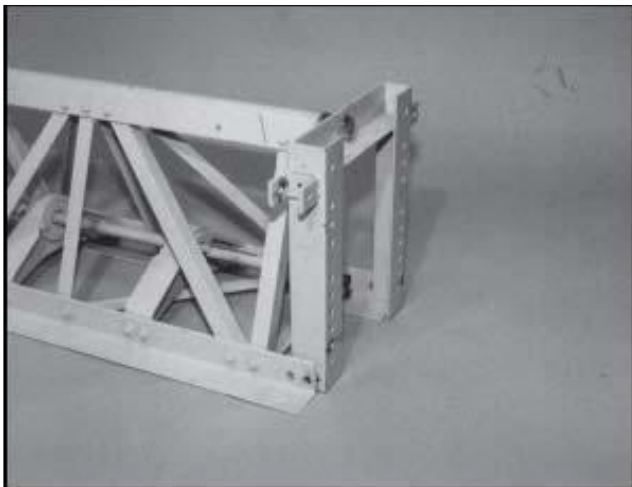
The end adaptor installation should take only a few moments using the instructions on the next two pages.



When your end adaptor arrives remove the parts from the box and make sure that you have everything you will need.



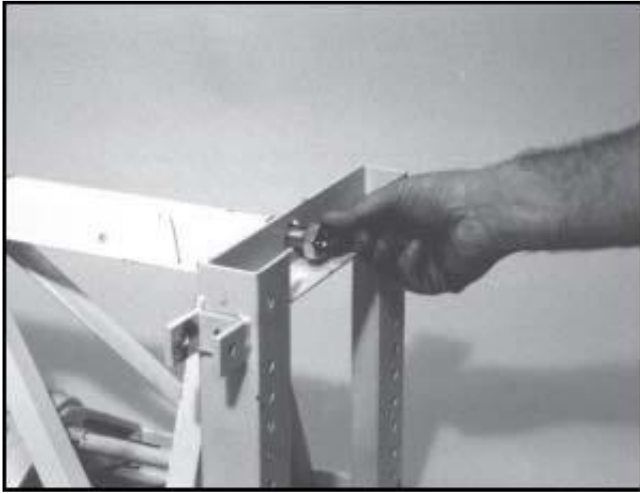
Begin installation of the end adaptor assembly by placing the proper jam nut onto the threaded rod at the end of the screed. The threaded rod will be left hand or right-hand threads, depending on which end of the screed you are working. Both types of nuts are provided in the kit.



Slip the upright into position on the threaded rod and the upright angles on the inside of the screed blades.



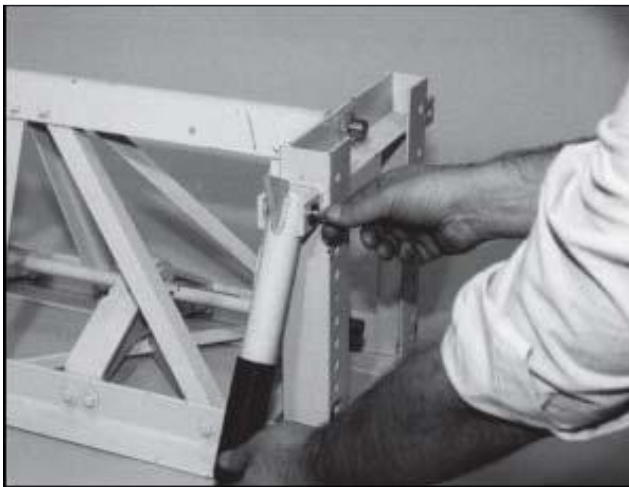
Bolt the upright angles into position using the holes nearest the end of the screed blades.



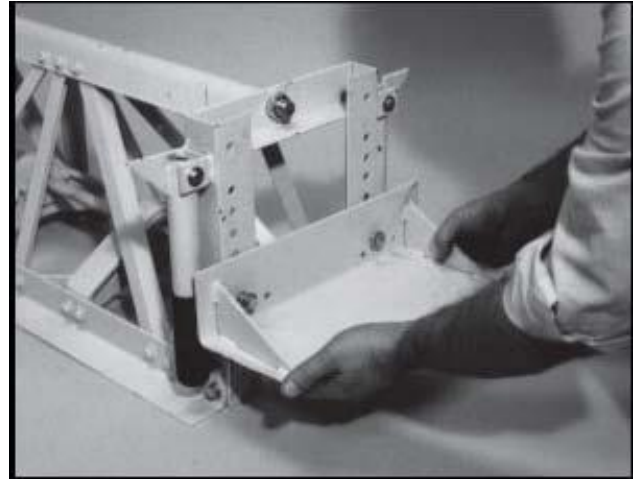
Place a second jam nut on the outer side of the upright. Check to be certain that the upright is vertical before tightening the jam nuts.



Install the rubber grips onto the end adaptor handles, make certain that the grip section is turned properly.



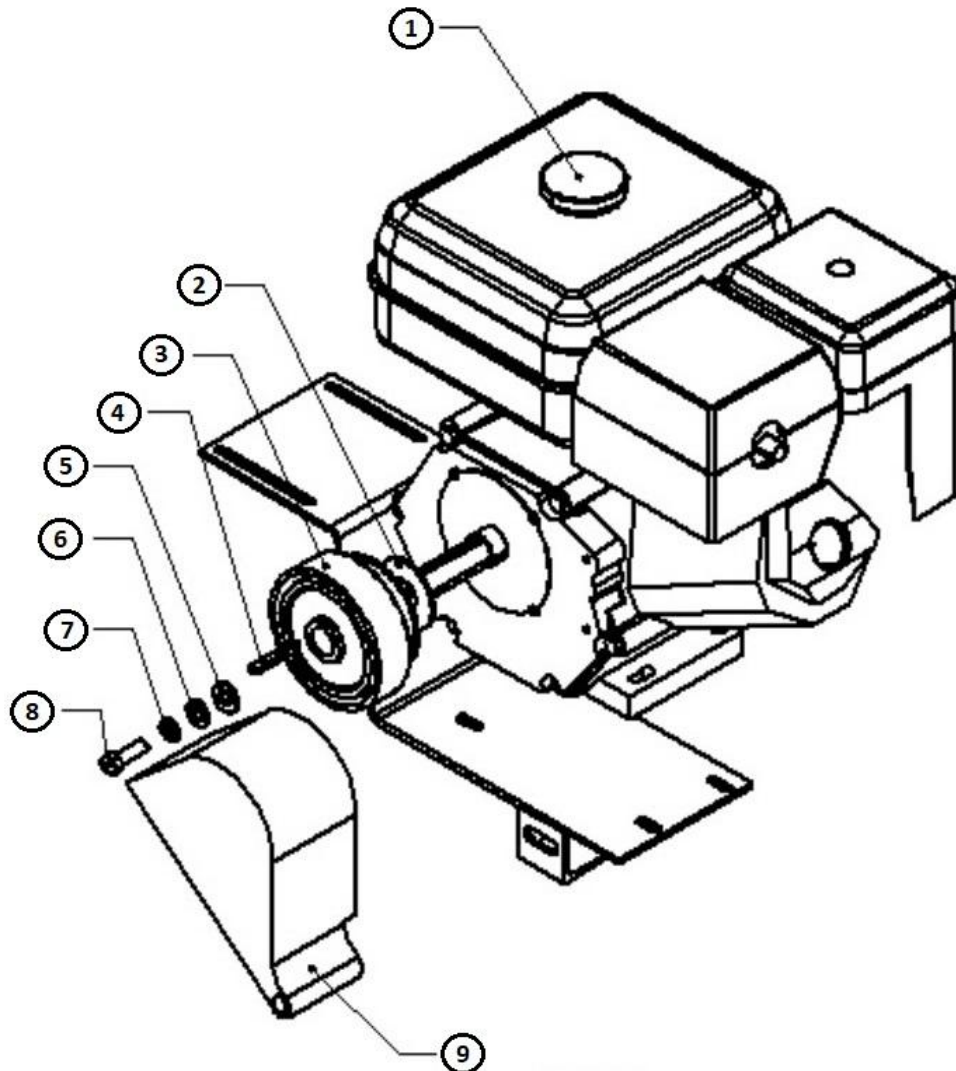
Position the handle into the brackets and bolt securely.



The last step in the end adaptor installation is to position the skid plate at the height that is needed and bolt into position.

PARTS BREAKDOWNS

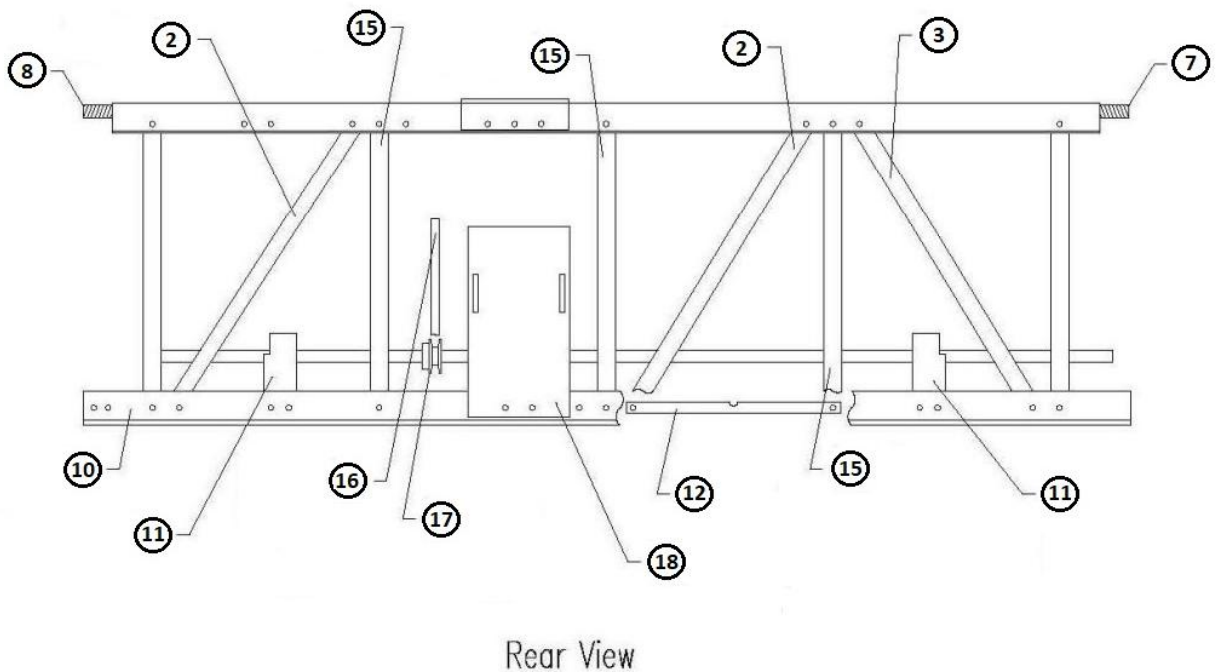
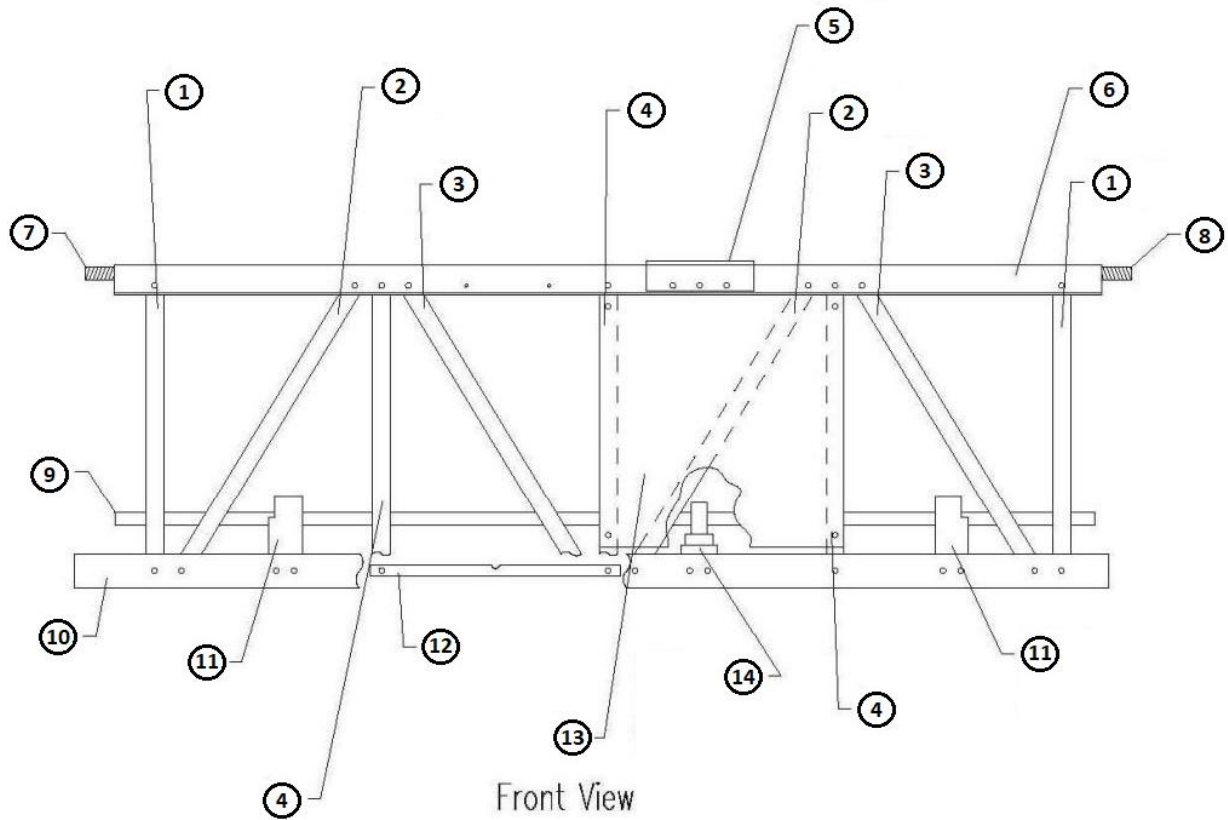
Parts List 1 – ENGINE ASSEMBLY



Parts List 1 – ENGINE ASSEMBLY

Item #	STANDARD SCREED		SUPER SCREED		Qty
	Part number	Description	Part number	Description	
1	21333-1	HONDA GX160	21334	HONDA GX270	1
2	11180	1" WASHER	11180	1" WASHER	1
3	760665	CLUTCH, 3/4" BORE	760095	CLUTCH, 1" BORE	1
4	470625	SQ. KEY 3/16" x 1-5/8" LG	11003	SQ. KEY 1/4" X 2" LG	1
5	990210	1/2" WASHER	990210	1/2" WASHER	1
6	981120	3/8" WASHER	981120	3/8" WASHER	1
7	10402	5/16" LOCK WASHER	13491	7/16" LOCKWASHER	1
8	981040	HHCS, 5/16" x 1-1/4" LG.	981135	HHCS, 7/16" x 1-1/4" LG	1
9	711085	CLUTCH GUARD	711085	CLUTCH GUARD	1
-	940130	MOTOR FASTENERS	940130	MOTOR FASTENERS	1
-	940140	CLUTCH FASTENERS	940140	CLUTCH FASTENERS	1

Parts List 2 – 5FT BASE SECTION



Parts List 2 – 5FT BASE SECTION

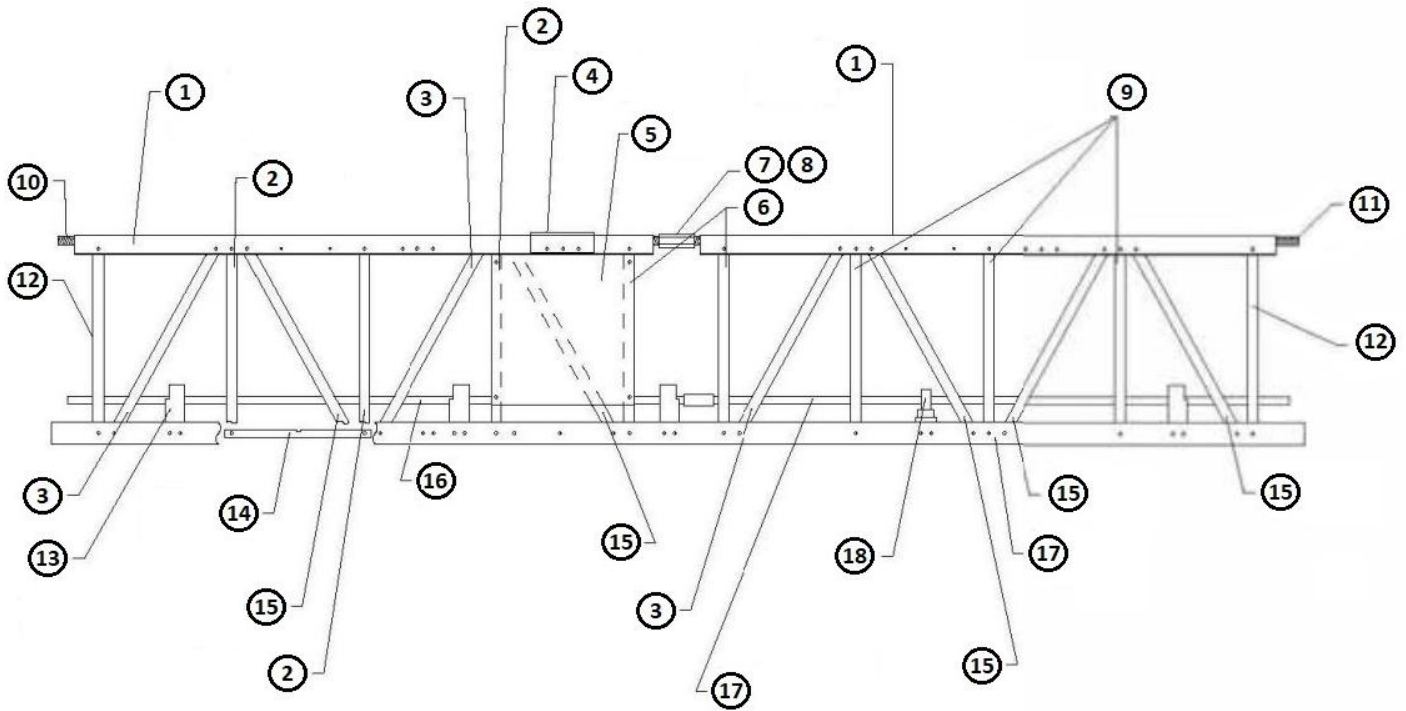
Item #	STANDARD SCREED		SUPER SCREED		Qty
	Part number	Description	Part number	Description	
1*	108290	A-FRAME BRACE	108295	A-FRAME BRACE	2
2*	108135	ANGLE BRACE LONG 16.4" RH	108175	ANGLE BRACE LONG 21.2" RH	4
3*	108155	ANGLE BRACE LONG 16.4" LH	108195	ANGLE BRACE LONG 21.2" LH	3
4*	108130	ANGLE BRACE SHORT 13" RH	108170	ANGLE BRACE SHORT 18.7" RH	3
5	460020	MOTOR MOUNT BRACKET	460050	MOTOR MOUNT BRACKET	1
6*	108305	CAMBER TOP	108315	CAMBER TOP	1
7	981085	STUD 3/4" x 3.5" LH THREAD	981085	STUD 3/4" x 3.5" LH THREAD	1
8	981080	STUD 3/4" x 4" RH THREAD	981080	STUD 3/4" x 4" RH THREAD	1
9	470640	SHAFT 5FT BASE UNIT 53.25" LG	470640	SHAFT 5FT BASE UNIT 53.25" LG	1
10*	108455	BLADE 5FT BASE	108450	BLADE 5FT BASE	2
11* ¹	108250	BEARING HOUSING W/BEARING	108260	BEARING HOUSING W/BEARING	2
12*	108230	X-BRACE BAR SHORT	108240	X-BRACE BAR SHORT	2
13*	108555	BELT GUARD	108550	BELT GUARD	1
14* ⁰	108255	BEARING CHANNEL W/BEARING	108265	BEARING CHANNEL W/BEARING	1
15*	108150	ANGLE BRACE SHORT 13" LH	108190	ANGLE BRACE SHORT 18.7" LH	3
16	760055	V-BELT, B31	760260	V-BELT, B43	1
17	760470	SHEAVE, 3.75" OD x 3/4" BORE	760470	SHEAVE, 3.75" OD x 3/4" BORE	1
17.1	470625	KEY, 3/16" SQ x 1-5/8" LG	470625	KEY, 3/16" SQ x 1-5/8" LG	1
18	470060	MOTOR STAND PLATE	470235	MOTOR STAND PLATE	1

*KIT: INCL. HARDWARE

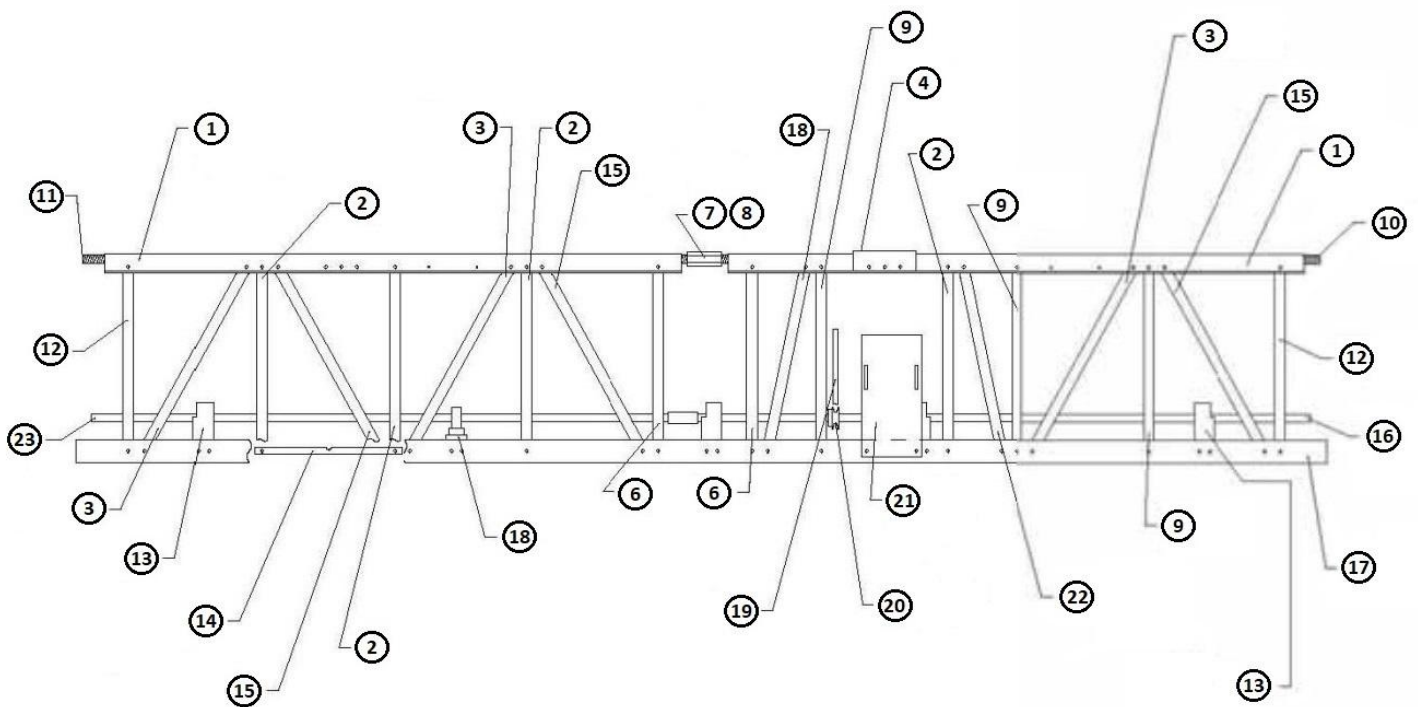
⁰SEE PAGE 45

¹SEE PAGE 46

Parts List 3 – 10FT BASE SECTION



Front View



Rear View

Parts List 3 – 10FT BASE SECTION

Item #	STANDARD SCREED		SUPER SCREED		Qty
	Part number	Description	Part number	Description	
1*	108305	CAMBER TOP	108315	CAMBER TOP	2
2*	108130	ANGLE BRACE SHORT 13" RH	108170	ANGLE BRACE SHORT 18.7" RH	5
3*	108155	ANGLE BRACE LONG 16.4" LH	108175	ANGLE BRACE LONG 21.2" RH	5
4	460020	MOTOR MOUNT BRACKET	460050	MOTOR MOUNT BRACKET	1
5*	108555	BELT GUARD	108550	BELT GUARD	1
6*	108290	A-FRAME BRACE	108295	A-FRAME BRACE	2
7 ²	981010	TURNBUCKLE 3/4"-10UNC x 3-1/8"LG	981010	TURNBUCKLE 3/4"-10UNC x 3-1/8"LG	1
8 ²	981020	HEX JAM NUT 3/4"-10UNC	981020	HEX JAM NUT 3/4"-10UNC	1
9*	108150	ANGLE BRACE SHORT 13" LH	108190	ANGLE BRACE SHORT 18.7" LH	5
10	981085	STUD 3/4" x 3.5" LH THREAD	981085	STUD 3/4" x 3.5" LH THREAD	2
11	981080	STUD 3/4" x 4" RH THREAD	981080	STUD 3/4" x 4" RH THREAD	2
12*	108290	A-FRAME BRACE	108295	A-FRAME BRACE	4
13* ¹	108250	BEARING HOUSING W/BEARING	108260	BEARING HOUSING W/BEARING	4
14*	108230	X-BRACE BAR SHORT	108240	X-BRACE BAR SHORT	3
15*	108155	ANGLE BRACE LONG 16.4" LH	108195	ANGLE BRACE LONG 21.2" LH	8
16	470050	SHAFT, 10FT BASE UNIT 59.5" LG	470050	SHAFT, 10FT BASE UNIT 59.5" LG	1
17*	108065	BLADE 10FT	108100	BLADE 10FT	2
18* ⁰	108255	BEARING CHANNEL W/BEARING	108265	BEARING CHANNEL W/BEARING	1
19	760055	V-BELT, B31	760260	V-BELT, B43	1
20	760470	SHEAVE, 3.75" OD x 3/4" BORE	760470	SHEAVE, 3.75" OD x 3/4" BORE	1
20.1	470625	SQ. KEY 3/16" x 1-5/8" LG	470625	SQ. KEY 3/16" x 1-5/8" LG	1
21	470060	MOTOR STAND PLATE	470235	MOTOR STAND PLATE	1
22*	108160	ANGLE BRACE BASE 13.3" LH	108200	ANGLE BRACE BASE 20.2" LH	1
23	460015	SHAFT, 10FT BASE UNIT 53.5" LG	460015	SHAFT, 10FT BASE UNIT 53.5" LG	1

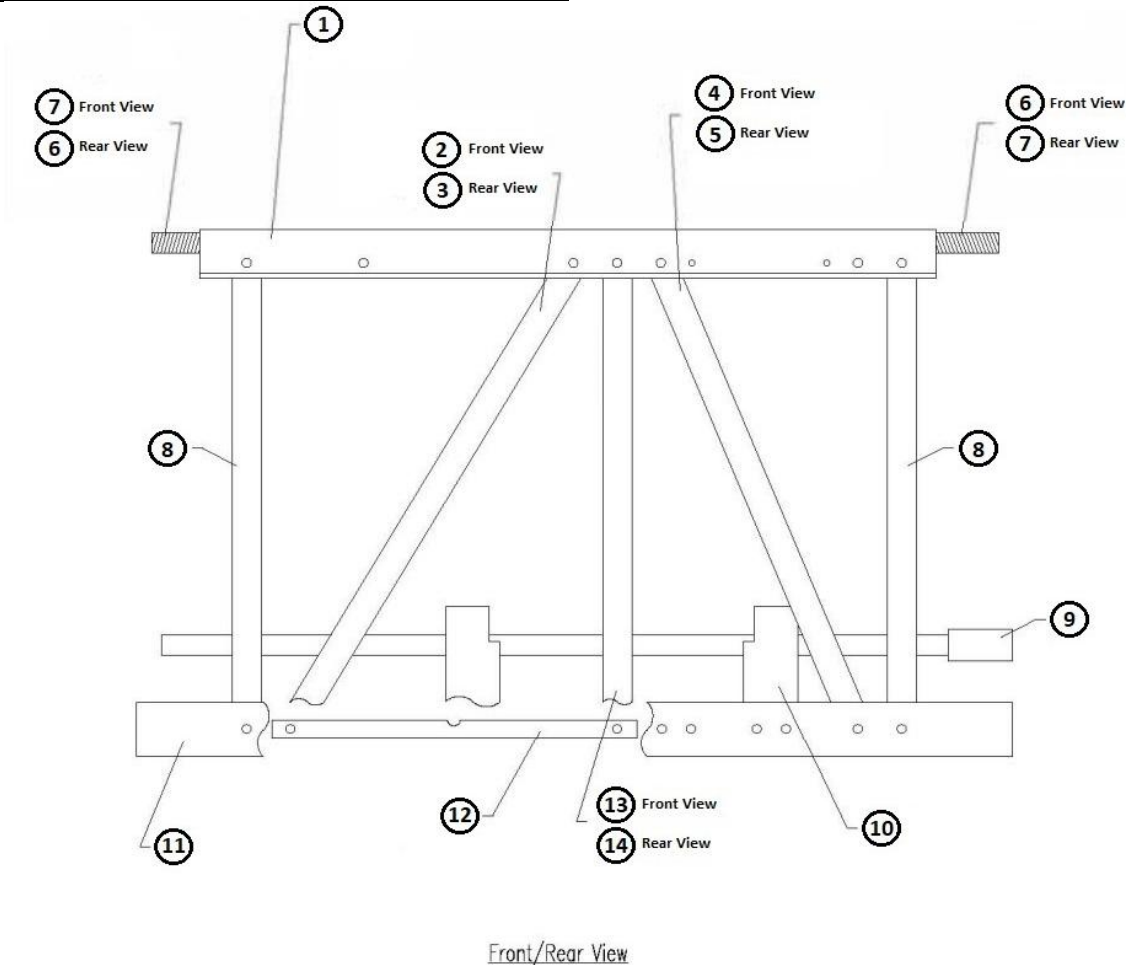
*KIT: INCL. HARDWARE

⁰SEE PAGE 45

¹SEE PAGE 46

²SEE PAGE 44

Parts List 4 – 2.5FT SUBSECTION



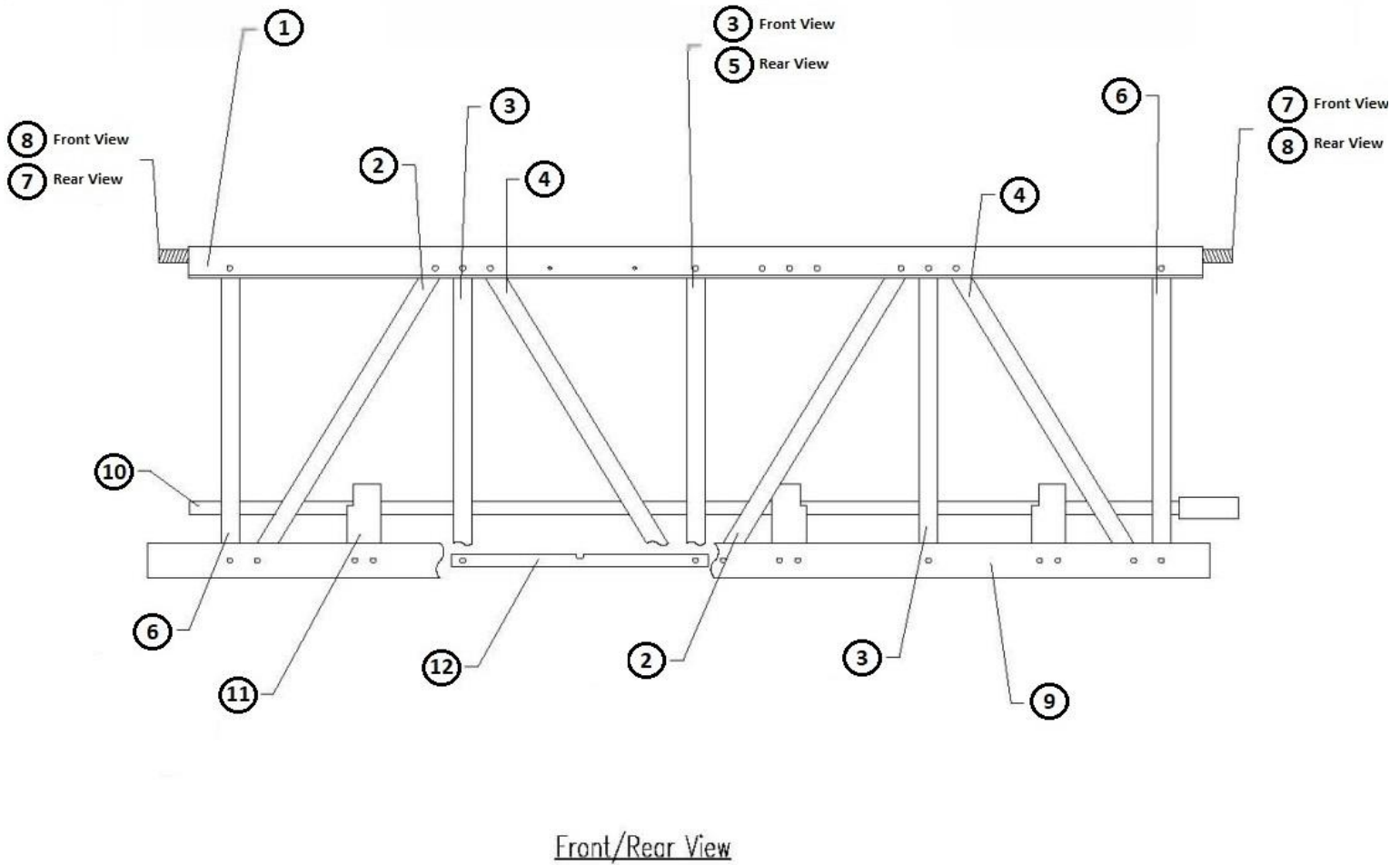
Parts List 4 – 2.5FT SUBSECTION

Item #	STANDARD SCREED		SUPER SCREED		Qty
	Part number	Description	Part number	Description	
1*	108310	CAMBER TOP	108325	CAMBER TOP	1
2*	108135	ANGLE BRACE LONG 16.4" RH	108175	ANGLE BRACE LONG 21.2" RH	1
3*	108145	ANGLE BRACE MID 14.7" RH	108185	ANGLE BRACE MID 20.15" RH	1
4*	108165	ANGLE BRACE MID 14.7" LH	108205	ANGLE BRACE MID 20.15" LH	1
5*	108155	ANGLE BRACE LONG 16.4" LH	108195	ANGLE BRACE LONG 21.2" LH	1
6	981080	STUD 3/4" x 4" RH THREAD	981080	STUD 3/4" x 4" RH THREAD	1
7	981085	STUD 3/4" x 3.5" LH THREAD	981085	STUD 3/4" x 3.5" LH THREAD	1
8*	108290	A-FRAME BRACE	108295	A-FRAME BRACE	2
9	460040	SHAFT, 2.5FT BASE UNIT 31.8" LG	460040	SHAFT, 2.5FT BASE UNIT 31.8" LG	1
10* ¹	108250	BEARING HOUSING W/BEARING	108260	BEARING HOUSING W/BEARING	2
11*	108080	BLADE 2.5FT	108115	BLADE 2.5FT	2
12*	108230	X-BRACE BAR SHORT	108240	X-BRACE BAR SHORT	1
13*	108150	ANGLE BRACE SHORT 13" LH	108190	ANGLE BRACE SHORT 18.7" LH	1
14*	108130	ANGLE BRACE SHORT 13" RH	108170	ANGLE BRACE SHORT 18.7" RH	1

*KIT: INCL. HARDWARE

¹SEE PAGE 46

Parts List 5 – 5FT SUBSECTION



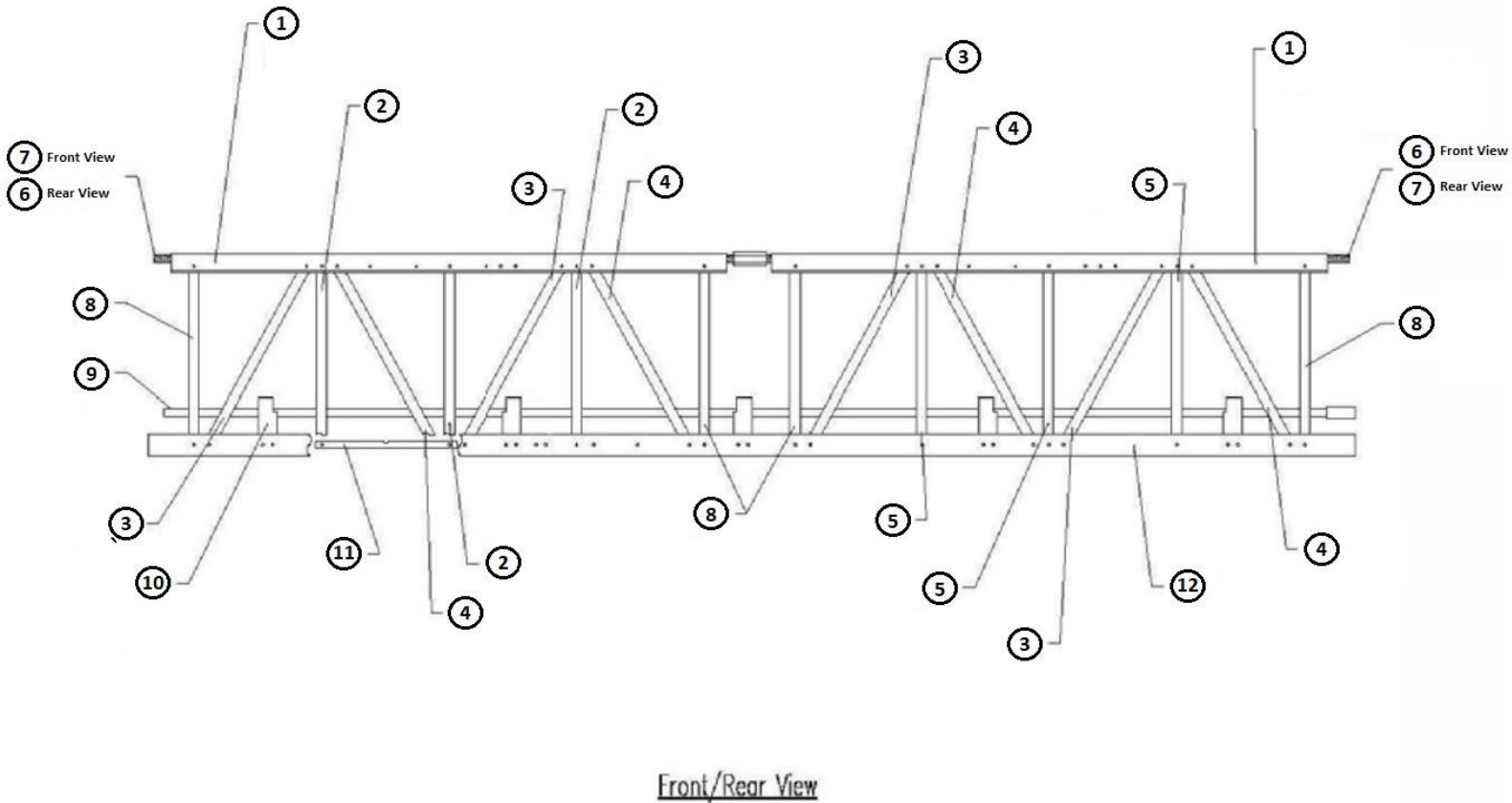
Parts List 5 – 5FT SUBSECTION

Item #	STANDARD SCREED		SUPER SCREED		Qty
	Part number	Description	Part number	Description	
1*	108305	CAMBER TOP	108315	CAMBER TOP	1
2*	108135	ANGLE BRACE LONG 16.4" RH	108175	ANGLE BRACE LONG 21.2" RH	4
3*	108150	ANGLE BRACE SHORT 13" LH	108190	ANGLE BRACE SHORT 18.7" LH	6
4*	108155	ANGLE BRACE LONG 16.4" LH	108195	ANGLE BRACE LONG 21.2" LH	4
5*	108130	ANGLE BRACE SHORT 13" RH	108170	ANGLE BRACE SHORT 18.7" RH	1
6*	108290	A-FRAME BRACE	108290	A-FRAME BRACE	2
7	981080	STUD 3/4" x 4" RH THREAD	981080	STUD 3/4" x 4" RH THREAD	1
8	981085	STUD 3/4" x 3.5" LH THREAD	981085	STUD 3/4" x 3.5" LH THREAD	1
9*	108075	BLADE 5FT SUBSECTION	108110	BLADE 5FT SUBSECTION	2
10	460035	SHAFT, 5FT SUBSECTION 61.5" LG	460035	SHAFT, 5FT SUBSECTION 61.5" LG	1
11* ¹	108250	BEARING HOUSING W/BEARING	108260	BEARING HOUSING W/BEARING	3
12*	108230	X-BRACE BAR SHORT	108230	X-BRACE BAR SHORT	2

*KIT: INCL. HARDWARE

¹SEE PAGE 46

Parts List 6 – 10FT SUBSECTION



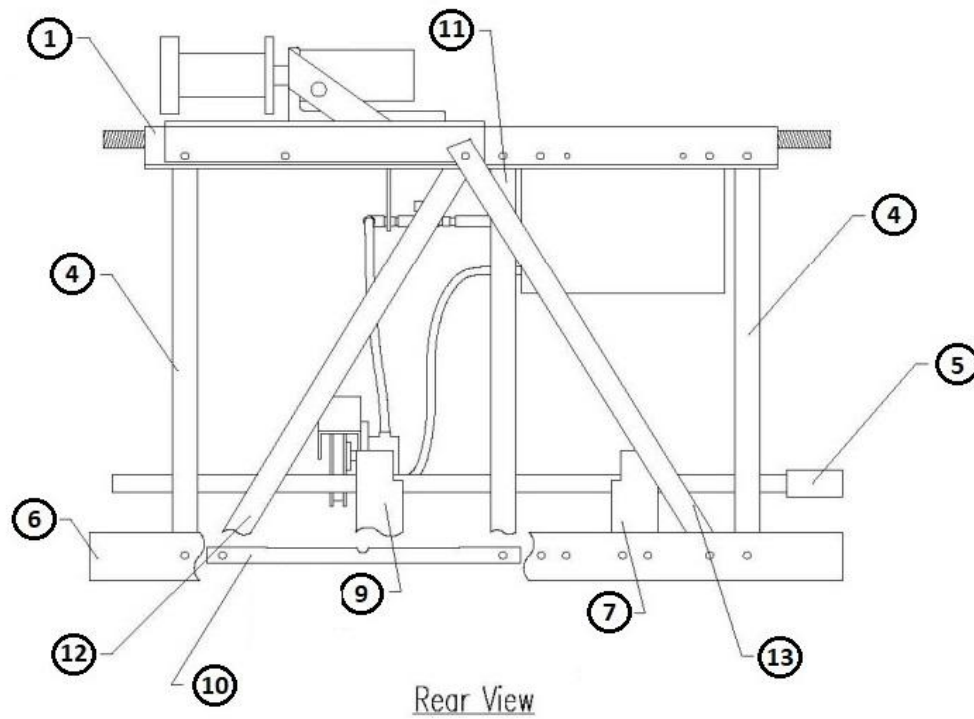
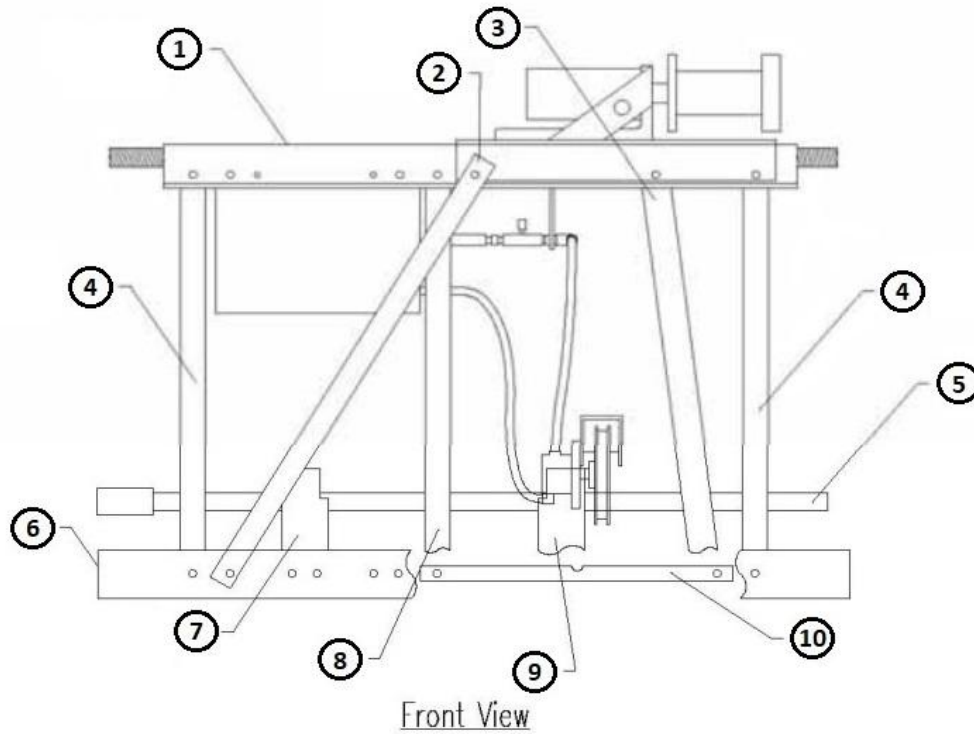
Parts List 6 – 10FT SUBSECTION

Item #	STANDARD SCREED		SUPER SCREED		Qty
	Part number	Description	Part number	Description	
1*	108305	CAMBER TOP	108315	CAMBER TOP	2
2*	108130	ANGLE BRACE SHORT 13" RH	108170	ANGLE BRACE SHORT 18.7" RH	6
3*	108135	ANGLE BRACE LONG 16.4" RH	108175	ANGLE BRACE LONG 21.2" RH	8
4*	108155	ANGLE BRACE LONG 16.4" LH	108195	ANGLE BRACE LONG 21.2" LH	8
5*	108150	ANGLE BRACE SHORT 13" LH	108190	ANGLE BRACE SHORT 18.7" LH	6
6	981080	STUD 3/4" x 4" RH THREAD	981080	STUD 3/4" x 4" RH THREAD	2
7	981085	STUD 3/4" x 3.5" LH THREAD	981085	STUD 3/4" x 3.5" LH THREAD	2
8*	108290	A-FRAME BRACE	108295	A-FRAME BRACE	4
9	460030	SHAFT, 10FT SUBSECTION 121.8" LG	460030	SHAFT, 10FT SUBSECTION 121.8" LG	1
10* ¹	108250	BEARING HOUSING W/BEARING	108260	BEARING HOUSING W/BEARING	5
11*	108230	X-BRACE BAR SHORT	108240	X-BRACE BAR SHORT	4
12*	108070	BLADE 10FT SUBSECTION	108105	BLADE 10FT SUBSECTION	2

*KIT: INCL. HARDWARE

¹SEE PAGE 46

Parts List 7 – 2.5FT SELF-PROPELLED (RH)



Parts List 7 – 2.5FT SELF-PROPELLED (RH)

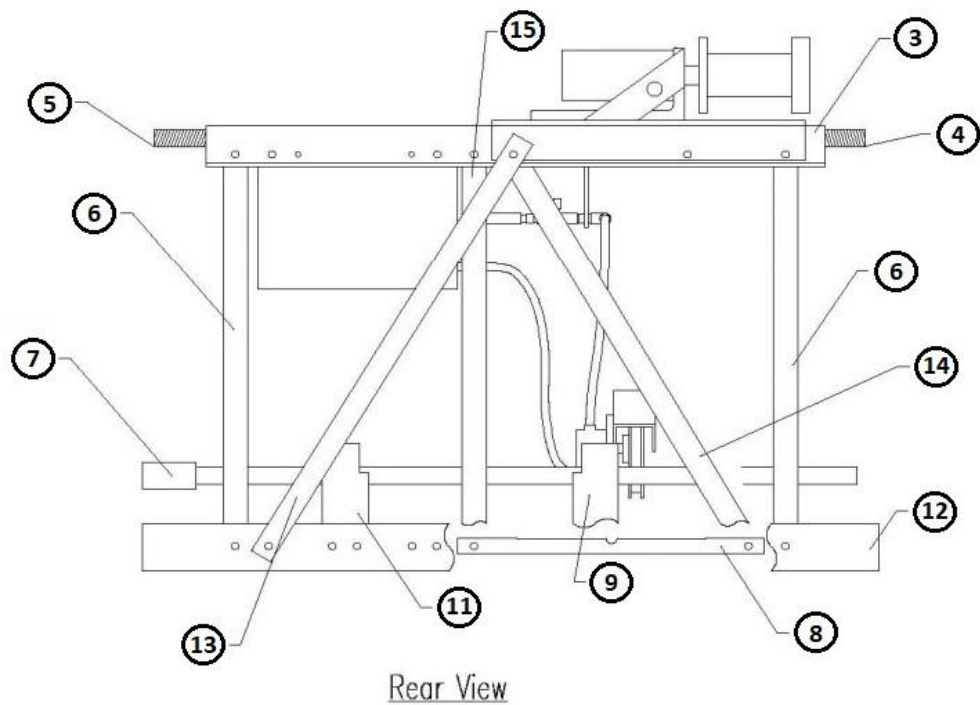
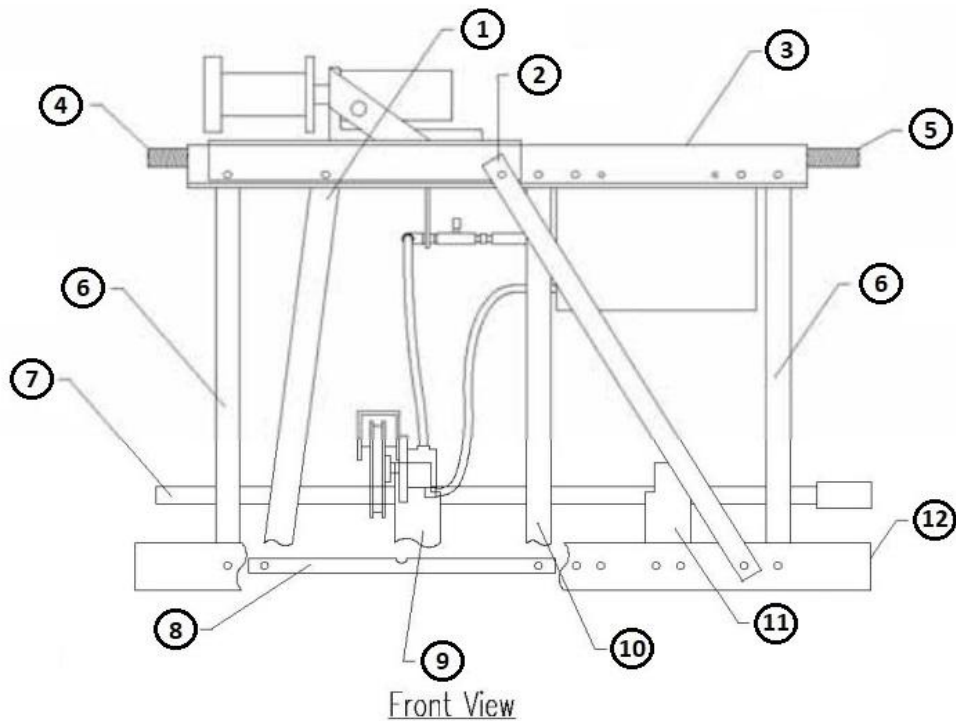
Item #	STANDARD SCREED		SUPER SCREED		Qty
	Part number	Description	Part number	Description	
1*	108330	CAMBER TOP	108430	CAMBER TOP	1
2	470310	FLAT BAR BRACE, SELF-PROP, RH	470470	FLAT BAR BRACE, SELF-PROP, RH	1
3*	108215	ANGLE BRACE SELF-PROP, 13.25" LH	108225	ANGLE BRACE SELF-PROP, 19" LH	1
4*	108290	A-FRAME BRACE	108295	A-FRAME BRACE	4
5	460110	SHAFT, SELF-PROP 31.8" LG	460110	SHAFT, SELF-PROP 31.8" LG	1
6*	108085	BLADE 2.5FT SELF-PROP	108120	BLADE 2.5FT SELF-PROP	2
7* ¹	108250	BEARING HOUSING W/BEARING	108260	BEARING HOUSING W/BEARING	1
8*	108130	ANGLE BRACE SHORT 13" RH	108170	ANGLE BRACE SHORT 18.7" RH	1
9* ³	460055	PUMP BRACKET BEARING HOUSING W/BEARING	460115	PUMP BRACKET BEARING HOUSING W/BEARING	1
10*	108230	X-BRACE BAR SHORT	108240	X-BRACE BAR SHORT	1
11*	108150	ANGLE BRACE SHORT 13" LH	108190	ANGLE BRACE SHORT 18.7" LH	1
12*	108135	ANGLE BRACE LONG 16.4" RH	108175	ANGLE BRACE LONG 21.2" RH	1
13	470315	FLAT BAR BRACE, SELF-PROP, LH	470475	FLAT BAR BRACE, SELF-PROP, LH	1

*KIT: INCL. HARDWARE

¹SEE PAGE 46

³SEE PAGE 40

Parts List 8 – 2.5FT SELF-PROPELLED (LH)



Parts List 8 – 2.5FT SELF-PROPELLED (LH)

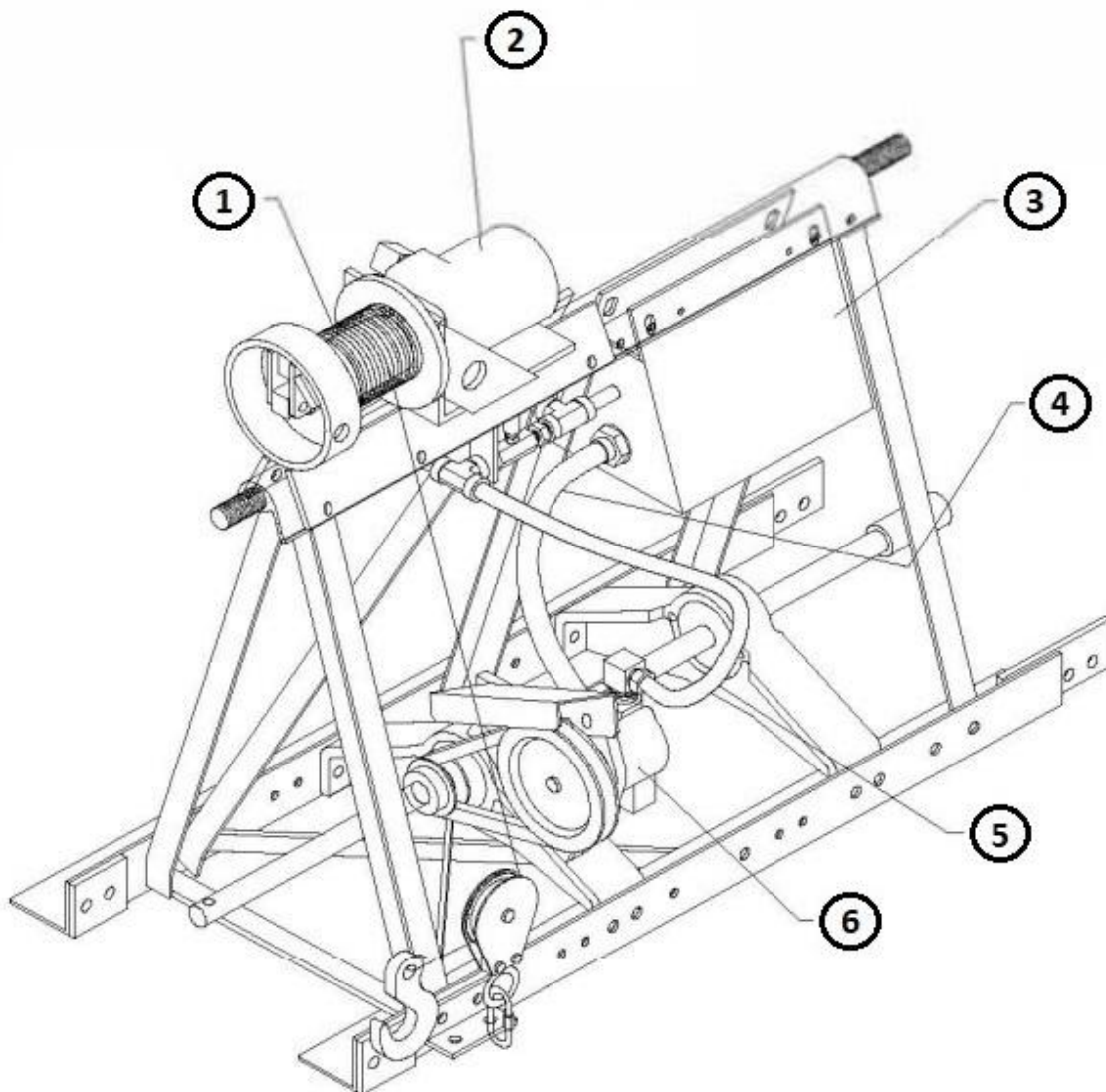
Item #	STANDARD SCREED		SUPER SCREED		Qty
	Part number	Description	Part number	Description	
1*	108210	ANGLE BRACE SELF-PROP, 13.25" RH	108220	ANGLE BRACE SELF-PROP, 19" RH	1
2	470315	FLAT BAR BRACE, SELF-PROP, LH	470475	FLAT BAR BRACE, SELF-PROP, LH	1
3*	108335	CAMBER TOP	108342	CAMBER TOP	1
4	981085	STUD 3/4" x 3.5" LH THREAD	981085	STUD 3/4" x 3.5" LH THREAD	1
5	981080	STUD 3/4" x 4" RH THREAD	981080	STUD 3/4" x 4" RH THREAD	1
6*	108290	A-FRAME BRACE	108295	A-FRAME BRACE	4
7	460110	SHAFT, SELF-PROP 31.8" LG	460110	SHAFT, SELF-PROP 31.8" LG	1
8*	108230	X-BRACE BAR SHORT	108240	X-BRACE BAR SHORT	1
9 ³	460055	PUMP BRACKET BEARING HOUSING W/BEARING	460115	PUMP BRACKET BEARING HOUSING W/BEARING	1
10*	108150	ANGLE BRACE SHORT 13" LH	108190	ANGLE BRACE SHORT 18.7" LH	1
11* ¹	108250	BEARING HOUSING W/BEARING	108260	BEARING HOUSING W/BEARING	1
12*	108090	BLADE 2.5FT	108115	BLADE 2.5FT	2
13	470310	FLAT BAR BRACE, SELF-PROP, RH	470470	FLAT BAR BRACE, SELF-PROP, RH	1
14*	108155	ANGLE BRACE LONG 16.4" LH	108195	ANGLE BRACE LONG 21.2" LH	1
15*	108130	ANGLE BRACE SHORT 13" RH	108170	ANGLE BRACE SHORT 18.7" RH	1

*KIT: INCL. HARDWARE

¹SEE PAGE 46

³SEE PAGE 40

Parts List 9 – SELF-PROPELLED DRIVE COMPONENTS



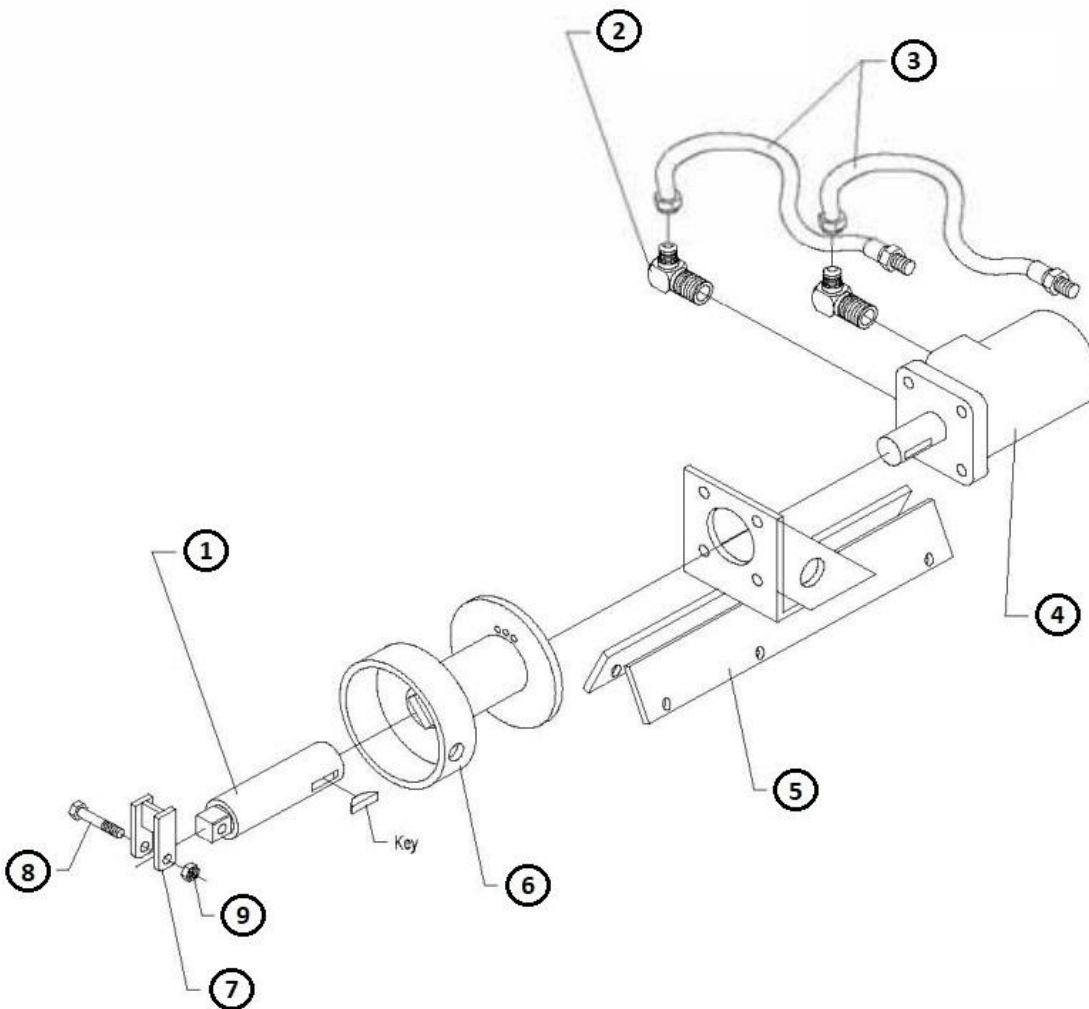
Parts List 9 – SELF-PROPELLED DRIVE COMPONENTS

Item #	STANDARD SCREED		SUPER SCREED		Qty
	Part number	Description	Part number	Description	
1	108480	WINCH CABLE ASSY	108480	WINCH CABLE ASSY	1
2	760121	HYDRAULIC MOTOR	760121	HYDRAULIC MOTOR	1
3 ⁴	-	HYDRAULIC TANK ASSY	-	HYDRAULIC TANK ASSY	1
4 LH	897081	SUCTION HOSE LH	897080	SUCTION HOSE LH/RH	1
4 RH	897082	SUCTION HOSE RH	897080	SUCTION HOSE LH/RH	1
5	897030	PRESSURE HOSE	897030	PRESSURE HOSE	1
6 ⁵	108055	HYDRAULIC PUMP ASSY	108050	HYDRAULIC PUMP ASSY	1

⁴SEE PAGE 42

⁵SEE PAGE 40

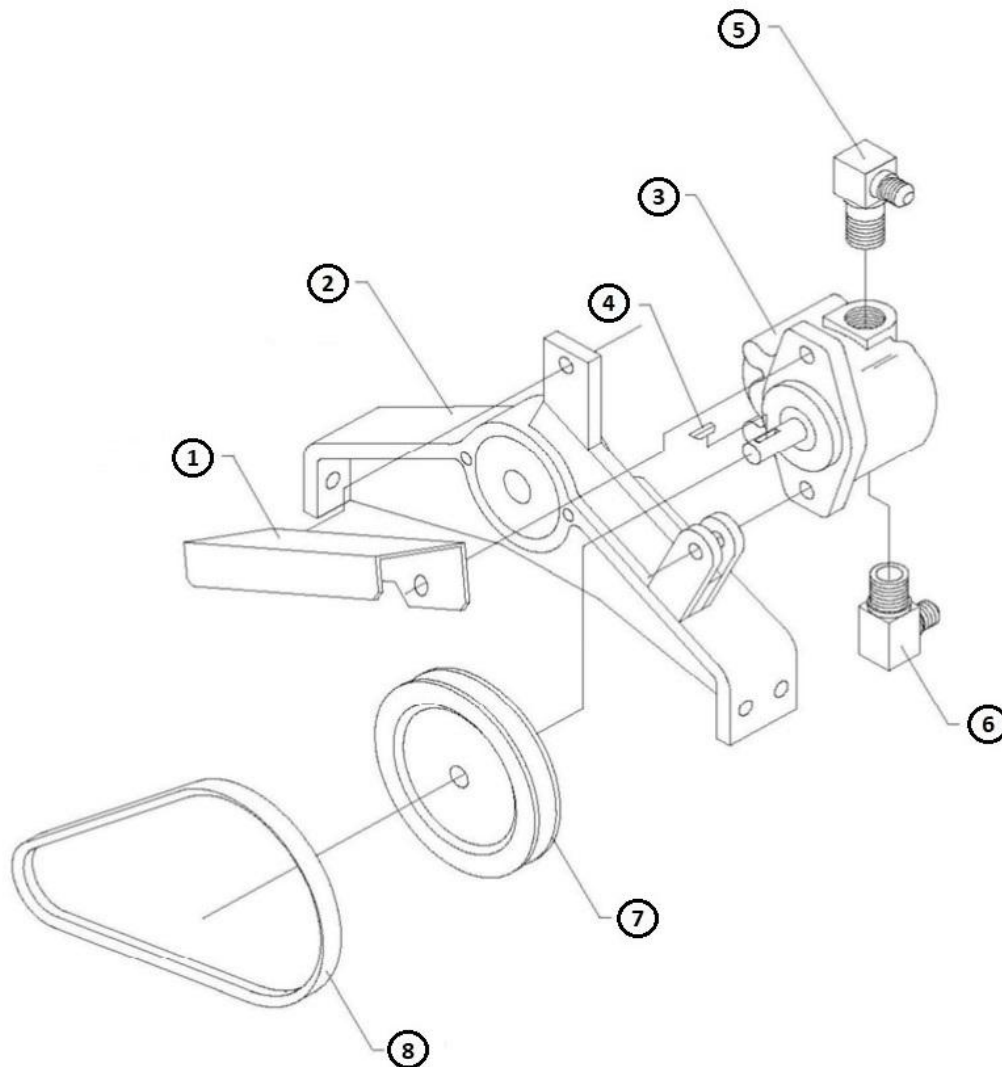
Parts List 10 – SELF-PROPELLED MOTOR ASSEMBLY



Parts List 10 – SELF-PROPELLED MOTOR ASSEMBLY

Item #	Part number	Description	Qty
1	460075	DRUM SHAFT	1
2	897050	HYD ELBOW 90 3/8"	2
3	897030	HOSE HYD. 1/4"	2
4	760121	HYDRAULIC MOTOR	1
5	460073	HYDRAULIC WINCH MOUNT	1
6	470400	WINCH SPOOL W/ CABLE HOLES	1
7	460080	CLUTCH LEVER, WINCH	1
8	993480	HHCS, 5/16-24 x 1-3/4" LG	1
9	980360	LOCKNUT, 5/16-24	1

Parts List 11 – SELF-PROPELLED PUMP ASSEMBLY

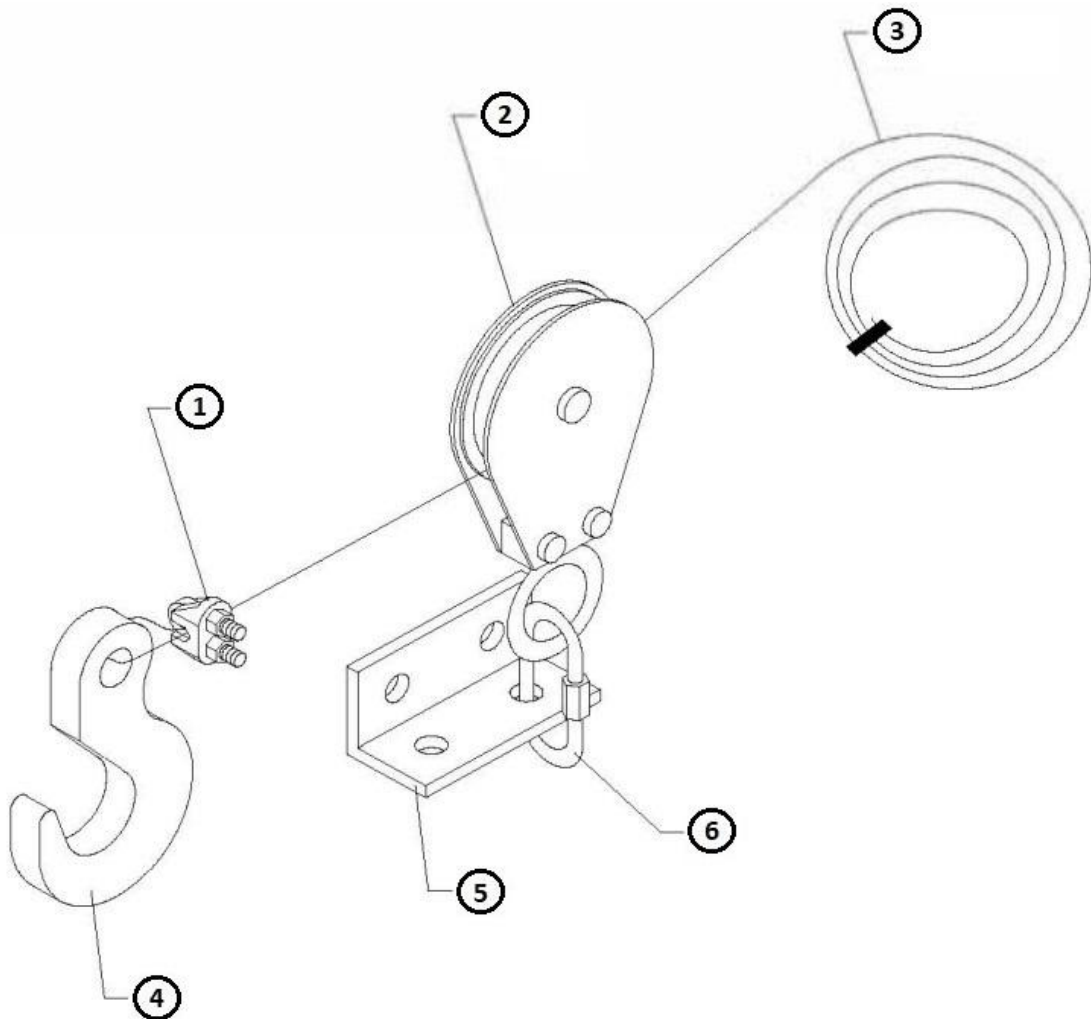


Parts List 11 – SELF-PROPELLED PUMP ASSEMBLY

Item #	STANDARD SCREED		SUPER SCREED		Qty
	Part number	Description	Part number	Description	
1	460725	BELT TENSION BRACKET	460725	BELT TENSION BRACKET	1
-	460885	BELT GUARD (NOT SHOWN)	460885	BELT GUARD (NOT SHOWN)	1
2*	460055	PUMP BRACKET BEARING HOUSING	460115	PUMP BRACKET BEARING HOUSING	1
3	760090	PUMP, HYDRAULIC	760090	PUMP, HYDRAULIC	1
4	-	WOODRUFF KEY	-	WOODRUFF KEY	1
5	897065	HYD FITTING 90DEG ELBOW 3/8"	897065	HYD FITTING 90DEG ELBOW 3/8"	1
6	897061	HYD FITTING 90DEG ELBOW 1/2"	897061	HYD FITTING 90DEG ELBOW 1/2"	1
7	760130-1	PULLEY 4-1/2"D x 1/2"	760130-1	PULLEY 4-1/2"D x 1/2"	1
8	760135	BELT, A19	760135	BELT, A19	1

*KIT: INCL. HARDWARE

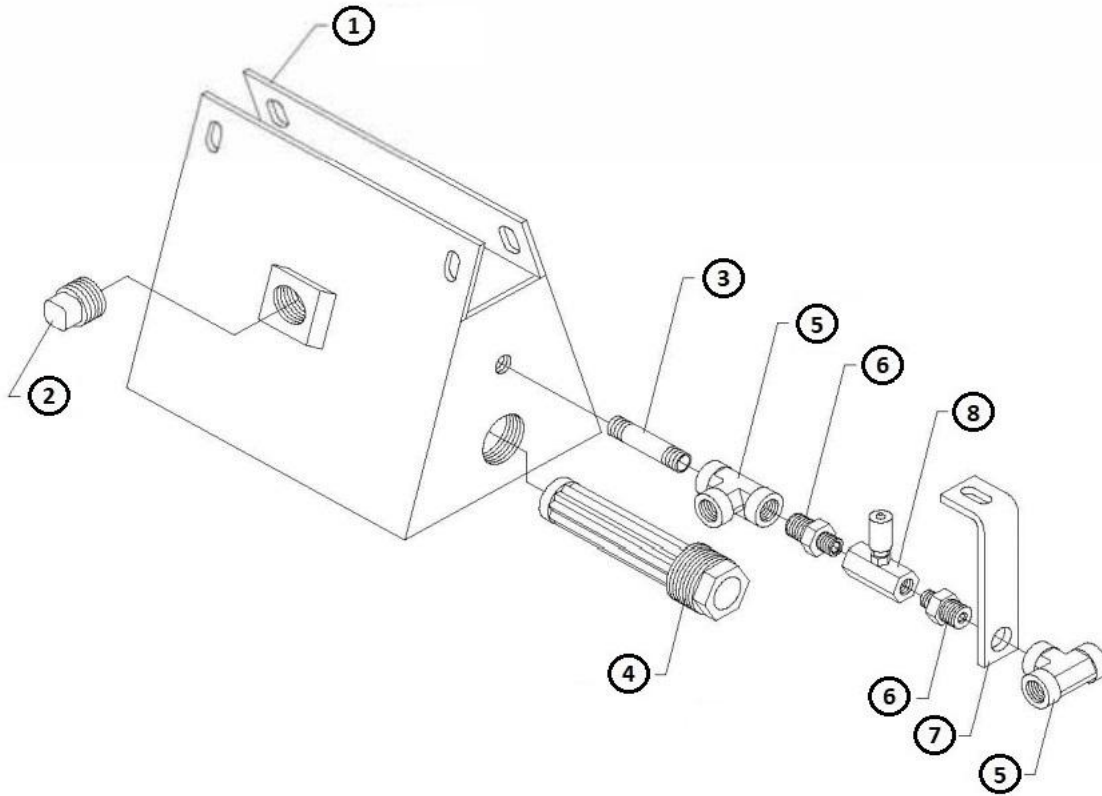
Parts List 12 – WINCH CABLE ASSEMBLY



Parts List 12 – WINCH CABLE ASSEMBLY

Item #	Part number	Description	Qty
1	796095	CLAMP CABLE 1/8 DIA. WIRE	1
2	796115	PULLEY BLOCK 2" OD x 3/16"	1
3	108481	CABLE AIRCRAFT 1/8"	1
4	796125	HOOKS 1/4"	1
5	470410	IDLER PULLEY BRACKET	1
6	796145	QUICK LINK 1/4" X 2" SCREW	1

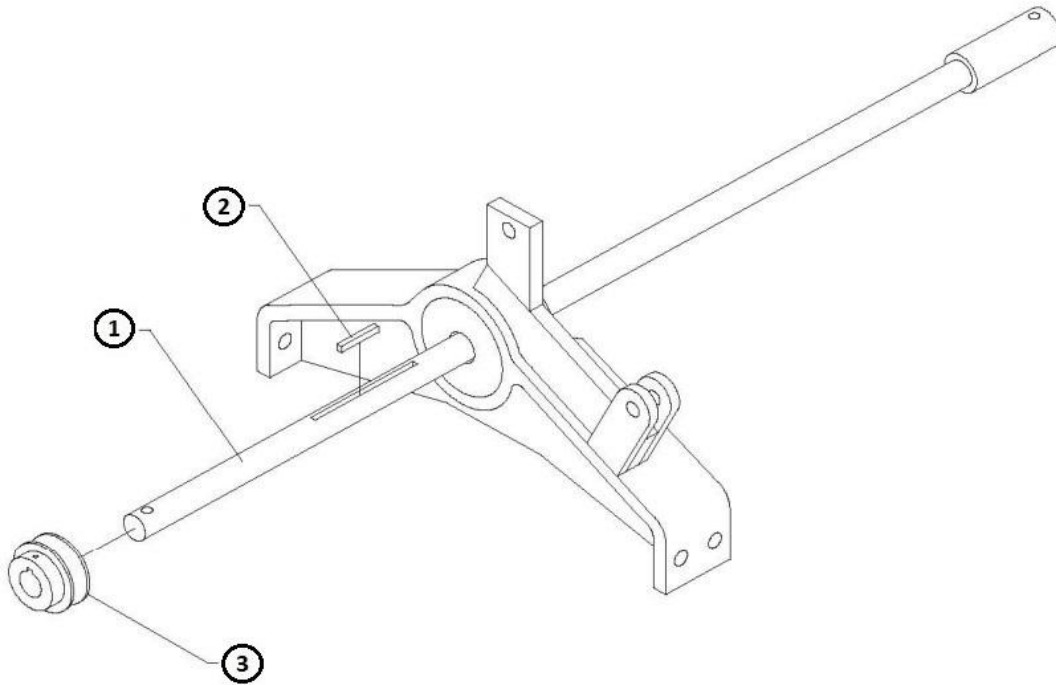
Parts List 13 – HYDRAULIC TANK ASSEMBLY



Parts List 13 – HYDRAULIC TANK ASSEMBLY

Item #	Part number	Description	Qty
1	460065	SELF PROPELLED OIL TANK	1
2	897040	PIPE PLUG 3/4"	1
3	895310	PIPE NIPPLE 1/4" x 2"	1
4	892600	STRAINER, HYDRAULIC	1
5	897500	HYD FITTING TEE FEMALE 1/4"	1
6	897055	HYD FITTING NIPPLE 1/4" x 1/8"	1
7	470395	BRACE	1
8	897075	VALVE NEEDLE 1/8"	1

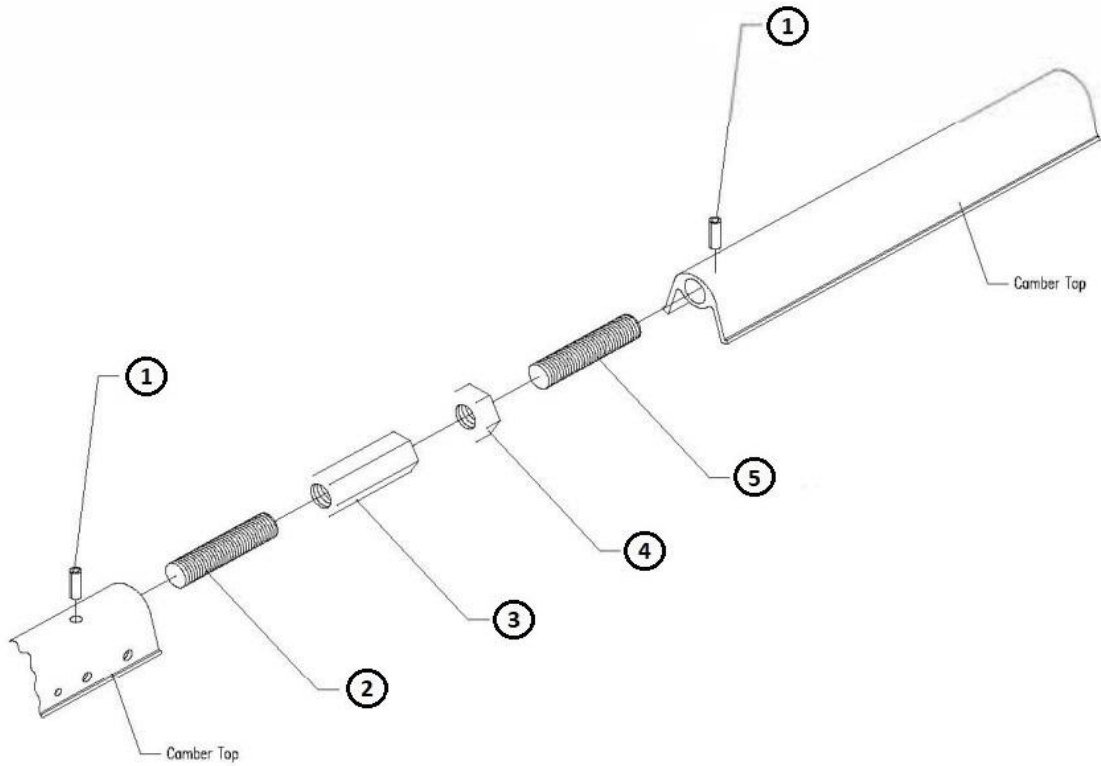
Parts List 14 – SELF-PROPELLED SHAFT ASSEMBLY



Parts List 14 – SELF-PROPELLED SHAFT ASSEMBLY

Item #	Part number	Description	Qty
1	460110	SHAFT, SELF-PROP 31.8" LG	1
2	470625	SQ. KEY 3/16" x 1-5/8" LG	1
3	760140	PULLEY, 2" DIA. X 3/4" BORE	1

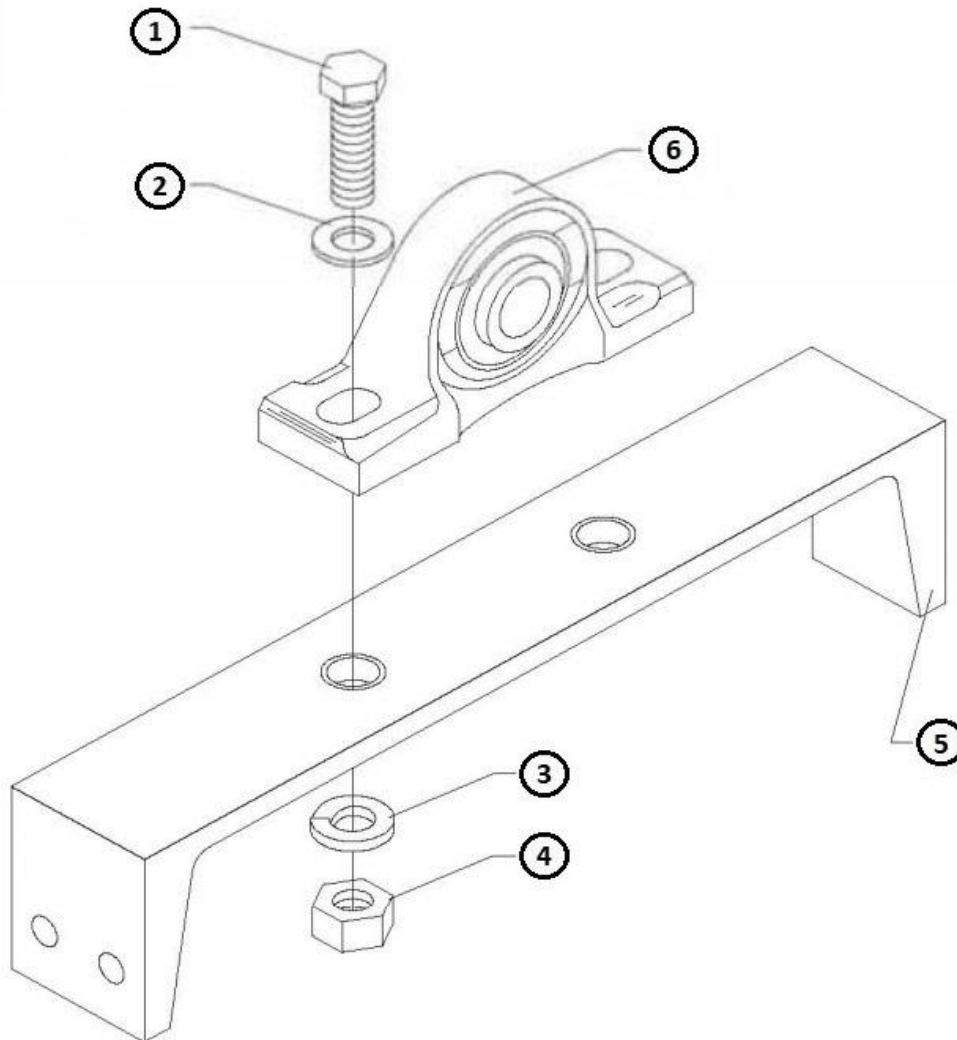
Parts List 15 – TURN BUCKLE ASSEMBLY



Parts List 15 – TURN BUCKLE ASSEMBLY

Item #	Part number	Description	Qty
1	981090	ROLL PIN, 5/16" DIA. X 1" LG.	2
2	981085	STUD 3/4" x 3.5" LH THREAD	1
3	981010	TURNBUCKLE HEX 3/4" x 3-1/8" LG	1
4	981020	HEX JAM NUT 3/4"-10UNC	1
5	981080	STUD 3/4" x 4" RH THREAD	1

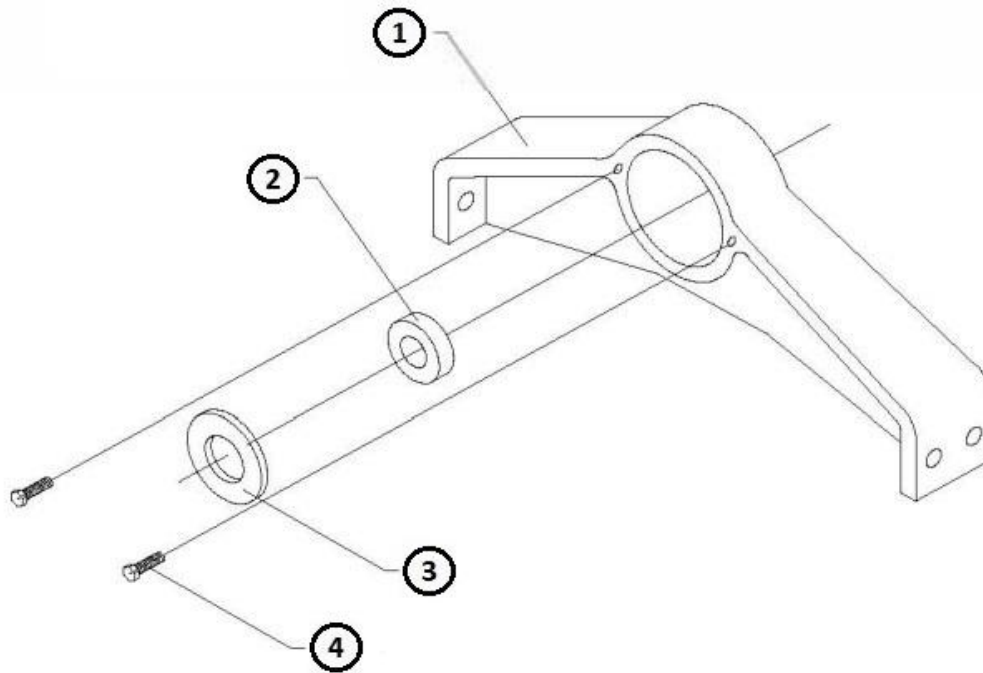
Parts List 16 – PILLOW BLOCK BEARING ASSEMBLY



Parts List 16 – PILLOW BLOCK BEARING ASSEMBLY

Item #	STANDARD SCREED		SUPER SCREED		Qty
	Part number	Description	Part number	Description	
1	981050	HHCS, 7/16-20 x 1-1/2" LG	981050	HHCS, 7/16-20 x 1-1/2" LG	2
2	981300	WASHER, 7/16"	981300	WASHER, 7/16"	2
3	13491	7/16" LOCKWASHER	13491	7/16" LOCKWASHER	2
4	981060	HEX NUT 7/16-20	981060	HEX NUT 7/16-20	2
5	470055	BEARING MT CHANNEL 10" BASE	470240	BEARING MT CHANNEL 12"	1
6	760050	BEARING PILLOW BLOCK 3/4"	760050	BEARING PILLOW BLOCK 3/4"	1

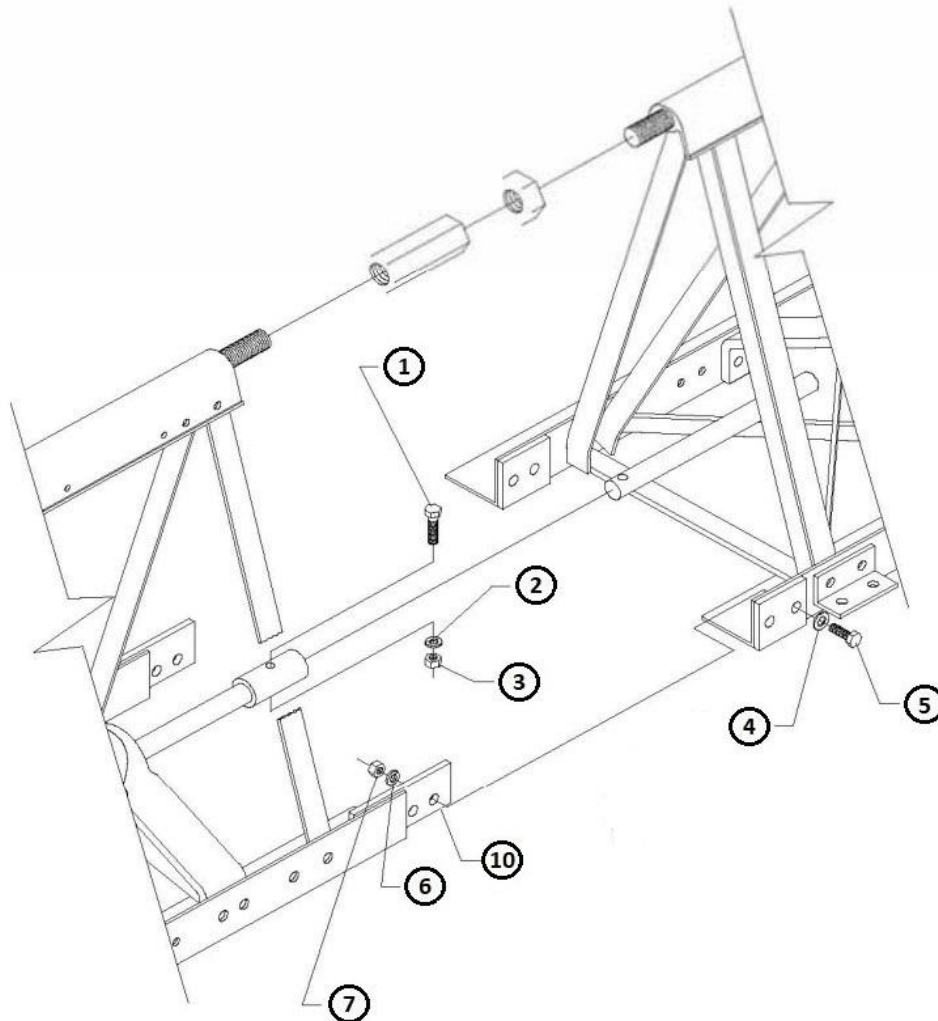
Parts List 17 – CAST BEARING ASSEMBLY



Parts List 17 – CAST BEARING ASSEMBLY

Item #	STANDARD SCREED		SUPER SCREED		Qty
	Part number	Description	Part number	Description	
1	470080	BEARING HOUSING 10"	470200	BEARING HOUSING 12"	1
2	760070	BEARING, 6304	760070	BEARING, 6304	1
3	981095	WASHER, 2-5/16" OD x 15/16" ID	981095	WASHER, 2-5/16" OD x 15/16" ID	1
4	995830	HHCS, 5/16"-18 x 3/4" LG	995830	HHCS, 5/16"-18 x 3/4" LG	2

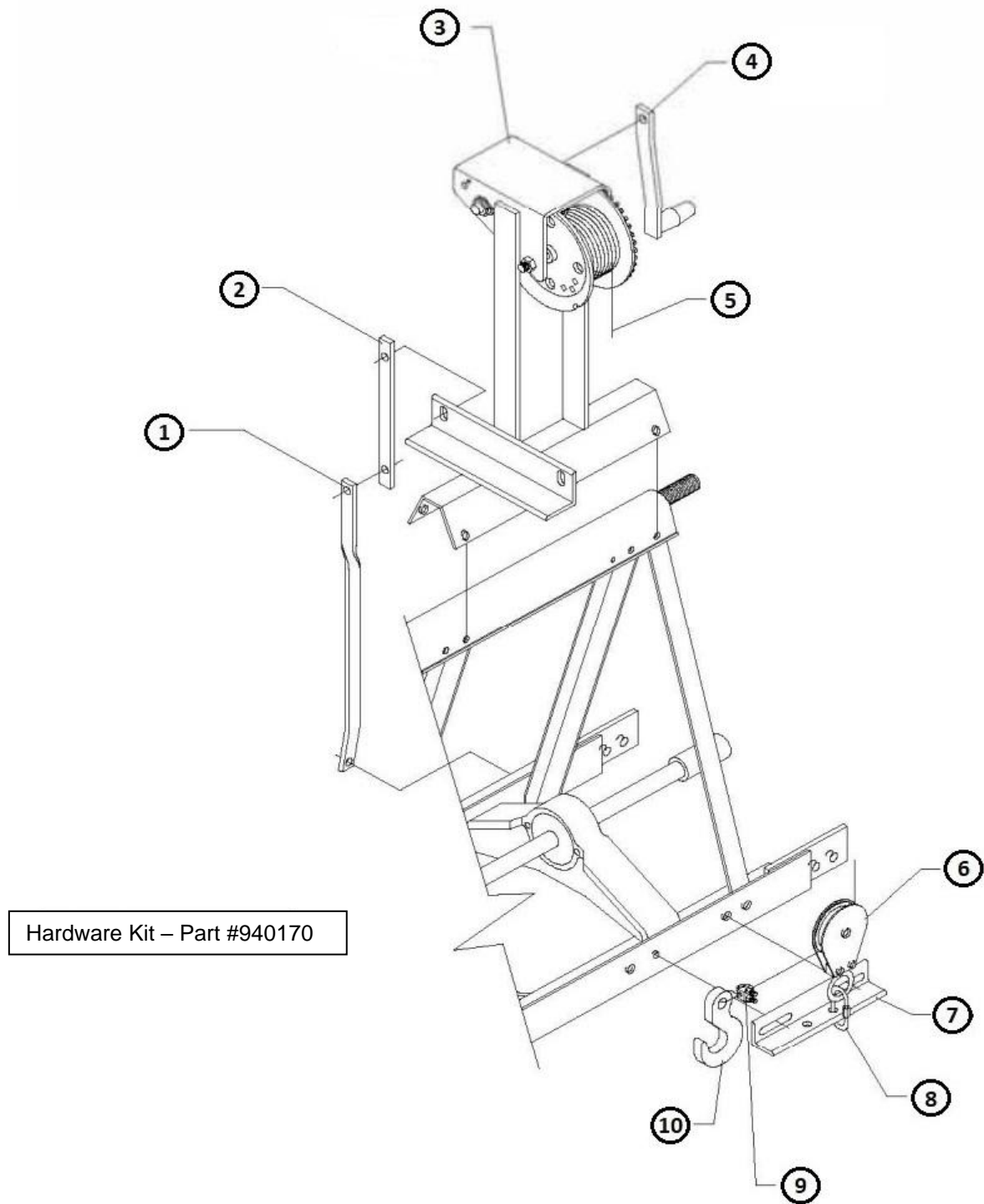
Parts List 18 – CONNECTING HARDWARE



Parts List 18 – CONNECTING HARDWARE

Item #	STANDARD SCREED		SUPER SCREED		Qty
	Part number	Description	Part number	Description	
KIT	940231	CONNECTING KIT INCL. ITEMS 1-10	940221	CONNECTING KIT INCL. ITEMS 1-10	1
KIT	940230	BOLT BAG INCL. ITEMS 1-9	940220	BOLT BAG INCL. ITEMS 1-9	1
1	981045	HHCS, 5/16"-24 x 1-1/2" LG	981045	HHCS, 5/16"-24 x 1-1/2" LG	1
2	10402	5/16" LOCK WASHER	10402	5/16" LOCK WASHER	1
3	980360	LOCKNUT, 5/16"-24	980360	LOCKNUT, 5/16"-24	1
4	981120	3/8" WASHER	981300	WASHER, 7/16"	4
5	981775	HHCS, 3/8"-24 x 1 1/4"LG	981135	HHCS 7/16"-20UNF x 1-1/4" LG	4
6	10902	LOCKWASHER, 3/8"	13491	7/16" LOCKWASHER	4
7	981115	HEX NUT, 3/8"-24	981060	HEX NUT 7/16-20	4
8	981010	TURNBUCKLE HEX 3/4"-10 x 3-1/8" LG	981010	TURNBUCKLE HEX 3/4"-10 x 3-1/8"LG	1
9	981020	HEX JAM NUT 3/4"-10	981020	HEX JAM NUT 3/4"-10UNC	1
10	470212	CONNECTING BRACKET	470211	CONNECTING BRACKET	2

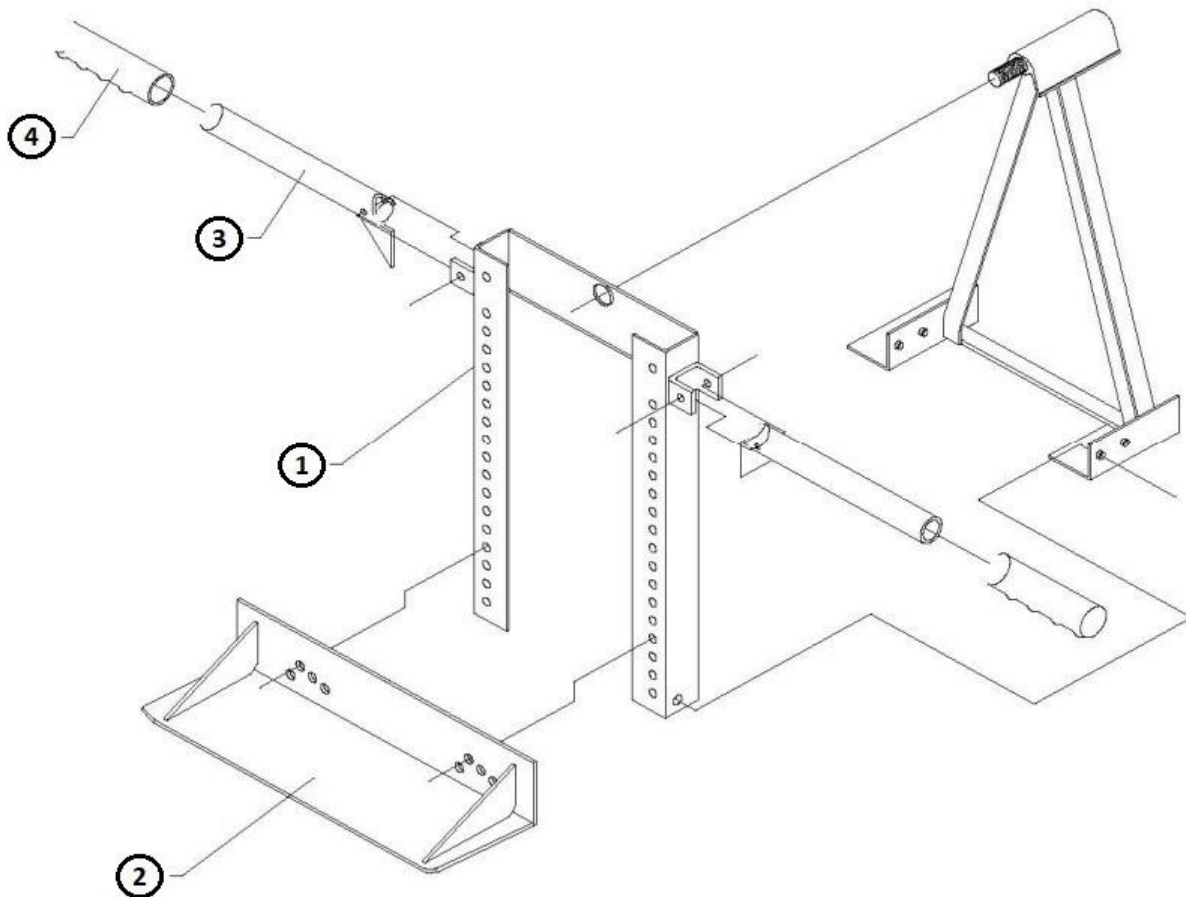
Parts List 19 – HAND WINCH ASSEMBLY



Parts List 19 – HAND WINCH ASSEMBLY

Item #	Part number	Description	Qty
1	470560	BRACE BAR HAND WINCH	1
2	470565	BRACE BAR EXTENSION HAND WINCH	1
3	108430	CAMBER TOP W/BOLTS	1
4	796220	HANDLE FOR HAND WINCH	1
5	108481	CABLE AIRCRAFT 1/8"	1
6	796115	PULLEY BLOCK 2" OD x 3/16"	1
7	470555	CABLE PULLEY BRACKET	1
8	796145	QUICK LINK 1/4" X 2" SCREW	1
9	796095	CLAMP CABLE 1/8 DIA. WIRE	1
10	796125	HOOKS 1/4"	1
KIT	940170	HAND WINCH FASTENERS	1

Parts List 20 – END ADAPTOR ASSEMBLY



Parts List 20 – END ADAPTOR ASSEMBLY

Item #	STANDARD SCREED		SUPER SCREED		Qty
	Part number	Description	Part number	Description	
1	460165	END ADAPTER FRAME	460180	END ADAPTER FRAME	1
2	460170	SKID PLATE END ADAPTER	460185	SKID PLATE END ADAPTER	1
3	460175	HANDLE END ADAPTER	460175	HANDLE END ADAPTER	2
4	796030	GRIP HANDLEBAR 1-1/4"	796030	GRIP HANDLEBAR 1-1/4"	2

CONTRACTOR PROVEN EQUIPMENT SINCE 1946



170 Traders Blvd E
Mississauga, ON L4Z 1W7
Canada

4701 Allmond Avenue
Louisville, KY 40209
United States

200 Commerce Drive
Freehold, NJ 07728
United States

Honeyholes Lane
Dunholme, Lincoln LN2 3SU
United Kingdom

